

J SAP CODE

I

H

G

F

E

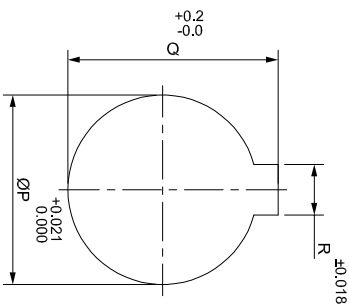
D

C

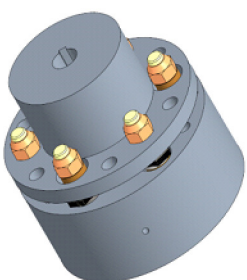
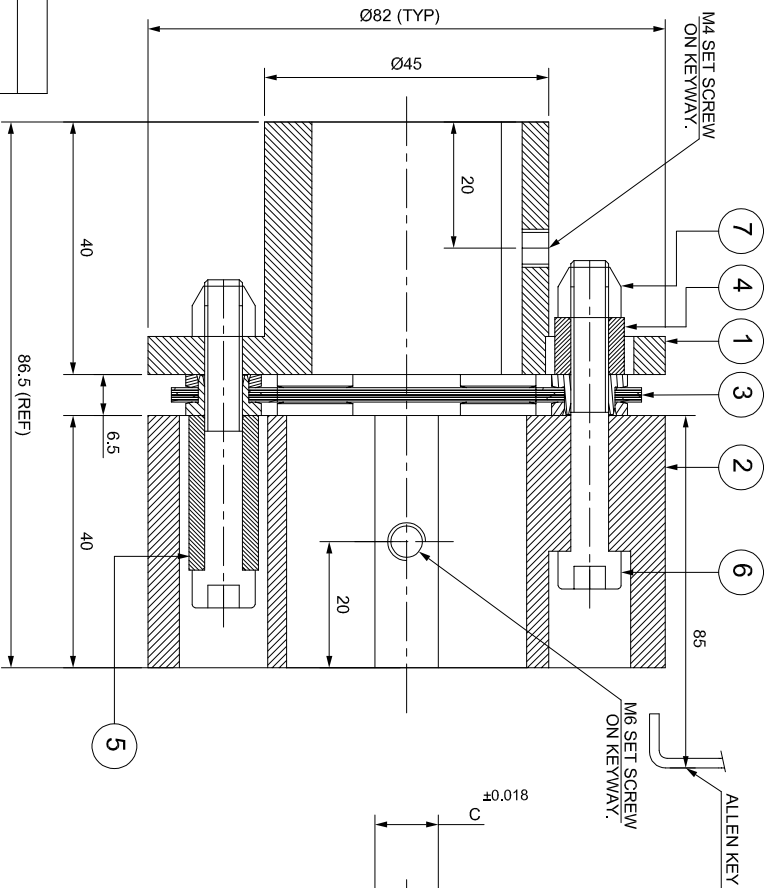
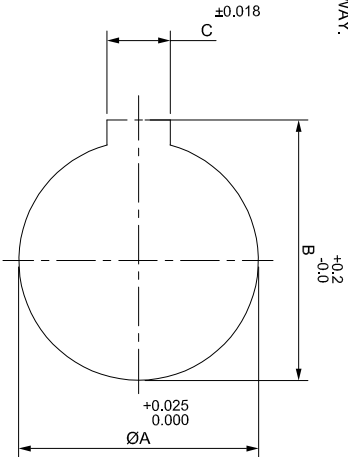
B

A

DRIVEN SIDE



DRIVE SIDE



APPLICATION DETAILS

APPLICATION	-
RATED POWER	-
RATED SPEED	-
RATED TORQUE	-
A.S.F.	-

COUPLING SPECIFICATIONS

COUPLING RATING	2.4 kW @ 100 RPM
CONTINUOUS TORQUE	229 Nm
PEAK TORQUE	458 Nm
SHORT CIRCUIT TORQUE	802 Nm
MAX. BORE	HUB I = 30 mm HUB II = 38 mm
MAX. SPEED	7000 RPM
WEIGHT (Approx.)	1.945 kg
INERTIA (WK ²)	0.002 kg.m ²
GD ²	0.008 kg.m ²
TORSIONAL STIFFNESS	0.073 MNm/rad
CPLG DYNAMIC BALANCING	GR. 2.5, ISO 21940-11
MAX. MISALIGNMENT	
AXIAL	± 1 mm
ANGULAR	0.75° PER STACK

NOTE:-

TIGHTENING TORQUE :-
1) SR.NO.6 COUPLING BOLT = 10 Nm

APPLICATION DETAILS

APPLICATION	-
RATED POWER	-
RATED SPEED	-
RATED TORQUE	-
A.S.F.	-

COUPLING SPECIFICATIONS

COUPLING RATING	2.4 kW @ 100 RPM
CONTINUOUS TORQUE	229 Nm
PEAK TORQUE	458 Nm
SHORT CIRCUIT TORQUE	802 Nm
MAX. BORE	HUB I = 30 mm HUB II = 38 mm
MAX. SPEED	7000 RPM
WEIGHT (Approx.)	1.945 kg
INERTIA (WK ²)	0.002 kg.m ²
GD ²	0.008 kg.m ²
TORSIONAL STIFFNESS	0.073 MNm/rad
CPLG DYNAMIC BALANCING	GR. 2.5, ISO 21940-11
MAX. MISALIGNMENT	
AXIAL	± 1 mm
ANGULAR	0.75° PER STACK

CUSTOMER NAME:

RATHI TRANSPOWER PVT. LTD.

PUNE, INDIA

ANG. OF PROJ.

DRG. NO.:

S.R.NO.	DESCRIPTION	MATERIAL	AUTHORITY/INITIALS	SIGN	DATE
1	DRIVEN HUB (I)	ASTM A 1040			1
2	DRIVE HUB (II)	ASTM A 1040			1
3	ELEMENT BLADE ASSEMBLY	ASTM A 1040			1
4	SLEEVE (I)	ASTM A 1040			3
5	SLEEVE (II)	ASTM A 1040			3
6	COUPLING BOLT	AH BOLT GR. 12.9 (ASTM 574M)			6
7	CLEVELOCK NUT	GR. 10			6