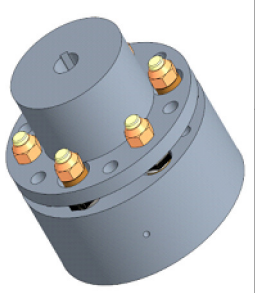
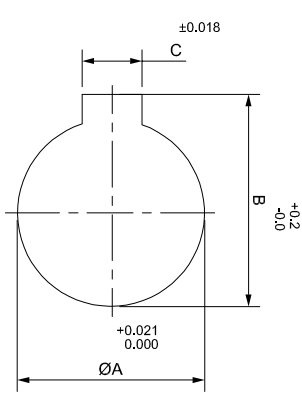
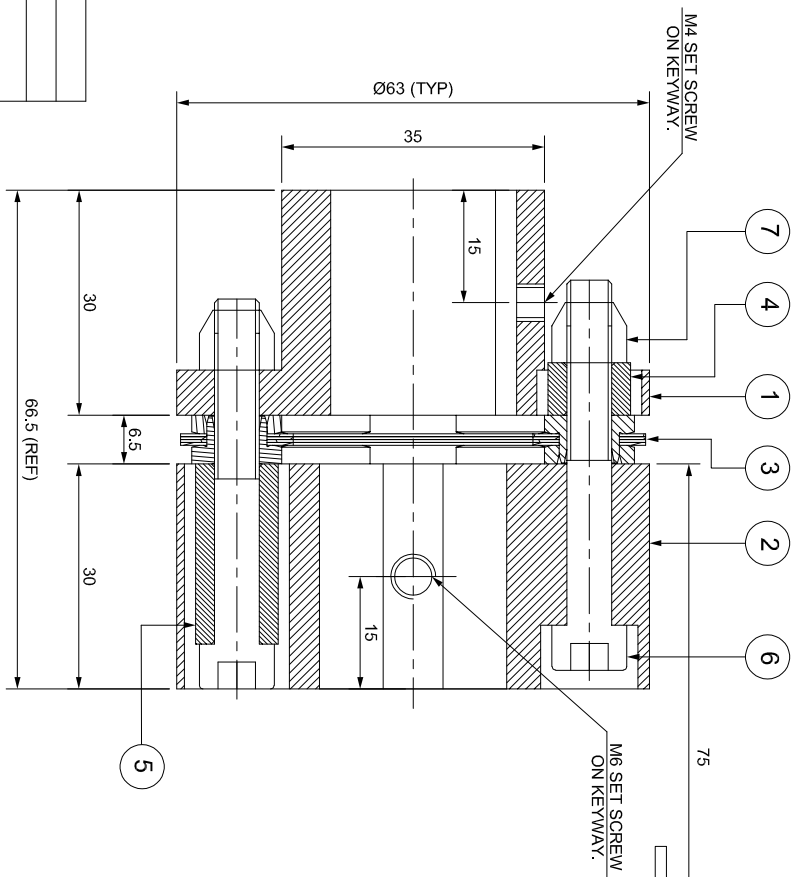
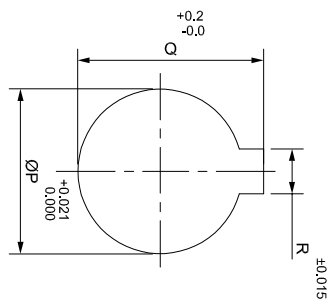


J	I	H	G	F	E	D	C	B	A
SAP CODE									



APPLICATION DETAILS

APPLICATION	-
RATED POWER	-
RATED SPEED	-
RATED TORQUE	-
A.S.F.	-

COUPLING SPECIFICATIONS

COUPLING RATING	1 kW @ 100 RPM
CONTINUOUS TORQUE	95 Nm
PEAK TORQUE	190 Nm
SHORT CIRCUIT TORQUE	333 Nm
MAX. BORE	HUB I = 22 mm HUB II = 26 mm
MAX. SPEED	7500 RPM
WEIGHT (Approx.)	0.99 kg
INERTIA (WK ²)	0.001 kg.m ²
GD ²	0.004 kg.m ²
TORSIONAL STIFFNESS	0.037 MNm/rad
CPLG DYNAMIC BALANCING	GR. 2.5, ISO 21940-11
MAX. MISALIGNMENT	
AXIAL	± 1 mm
ANGULAR	0.75° PER STACK

NOTE:-
TIGHTENING TORQUE :-
1) SR.NO.6 COUPLING BOLT = 10 Nm

SR.NO.	DESCRIPTION	MATERIAL	QTY.
7	CLEVELOCK NUT	GR. 10	6
6	COUPLING BOLT	AH BOLT GR. 12.9 (ASTM 574M)	6
5	SLEEVE (II)	ASTM A 1040	3
4	SLEEVE (I)	ASTM A 1040	3
3	ELEMENT BLADE ASSEMBLY	AISI SS 301	1
2	DRIVE HUB (II)	ASTM A 1040	1
1	DRIVEN HUB (I)	ASTM A 1040	1

TITLE:	RLMK-10 I/II /XXXX CPLG	MATERIAL:	AUTHORITY/INITIALS	SIGN	DATE
CUSTOMER NAME:		REFER TABLE	DRAWN	-	-
			CHECKED	-	-
			APPROVED	-	-
			SCALE: NTS		REF. NO.

REV. / DM/RN NO.	DESCRIPTION	REV. BY/APPD. BY	DATE		RATHI TRANSPOWER PVT. LTD. PUNE, INDIA	ANG. OF PROJ		DRG. NO.:	L/RLMK-XXXX/0