

J

I

H

G

F

E

D

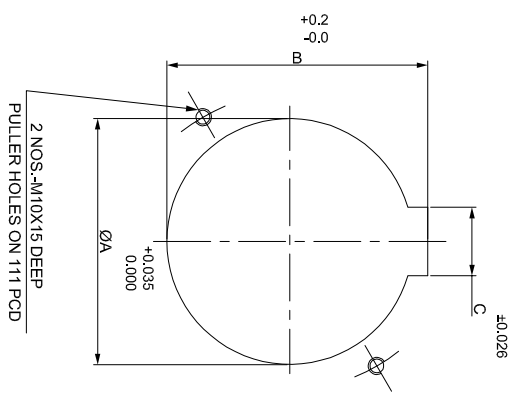
C

B

A

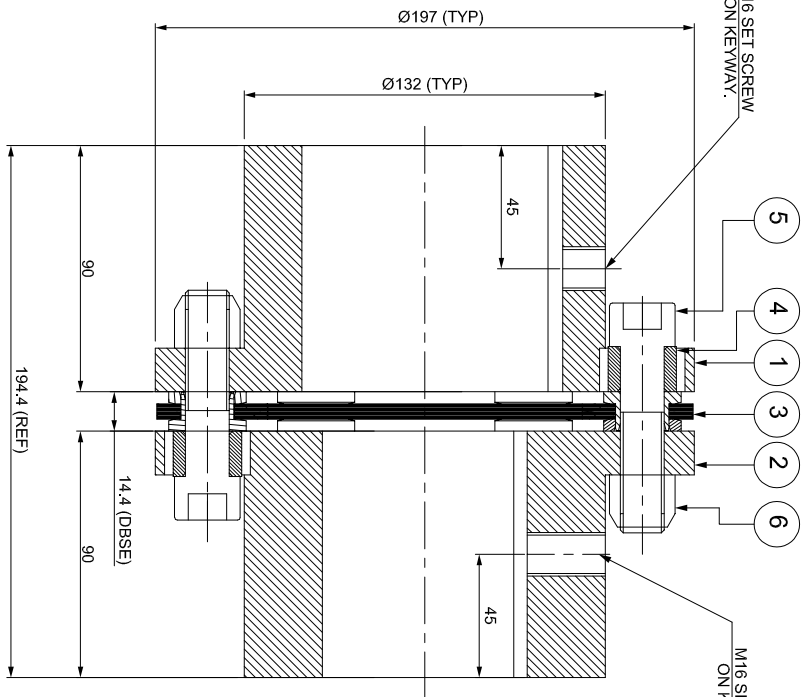
SAP CODE

DRIVE SIDE

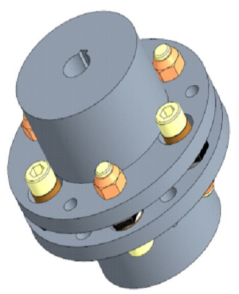
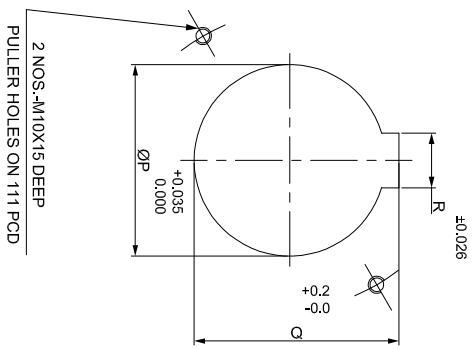


M16 SET SCREW ON KEYWAY.

M16 SET SCREW ON KEYWAY.



DRIVEN SIDE



APPLICATION DETAILS

RATED POWER	-
RATED SPEED	-
RATED TORQUE	-
A.S.F.	-

COUPLING SPECIFICATIONS

COUPLING RATING	58.5 kW @ 100 RPM
CONTINUOUS TORQUE	5586 Nm
PEAK TORQUE	11172 Nm
SHORT CIRCUIT TORQUE	19551 Nm
MAX. BORE	90 mm
MAX. SPEED	4200 RPM
WEIGHT (Approx.)	22.2 kg
INERTIA (WK ²)	0.132 kg.m ²
GD ²	0.528 kg.m ²
TORSIONAL STIFFNESS	2.393 MNm/rad
CPLG DYNAMIC BALANCING	GR: 2.5, ISO 21940-11
MAX. MISALIGNMENT	± 2 mm
AXIAL	
ANGULAR	0.75° PER STACK

NOTE:-
TIGHTENING TORQUE :-
1) SR.NO.5 COUPLING BOLT = 211 Nm

6	NYLOCK NUT	GR. 10				
5	COUPLING BOLT	AH BOLT GR. 12.9 (ASTM 574M)				
4	SLEEVE	ASTM A 1040				
3	ELEMENT BLADE ASSEMBLY	ANSI SS 301				
2	DRIVEN HUB (I)	ASTM A 1040				
1	DRIVE HUB (I)	ASTM A 1040				

TITLE:	RUMK-520 II /XXXX CPLG	MATERIAL:	
CUSTOMER NAME:		REFER TABLE	
AUTHORITY INITIALS		SIGN	
DRAWN		DATE	
CHECKED			
APPROVED			
SCALE: NTS		REF. NO.	

REV.	DMRN NO.	DESCRIPTION	REV. BY	APPD. BY	DATE