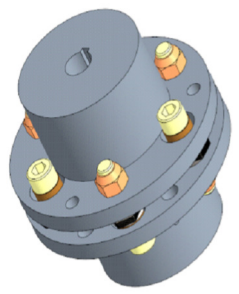
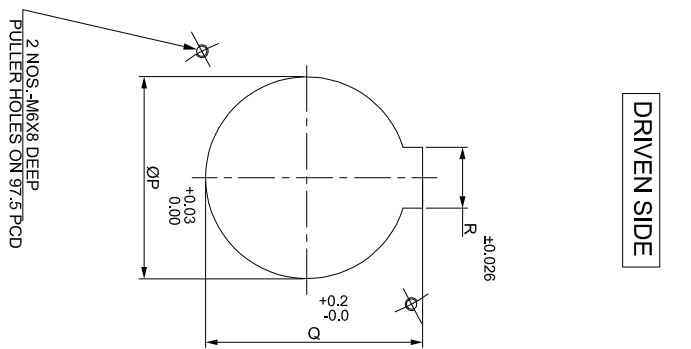
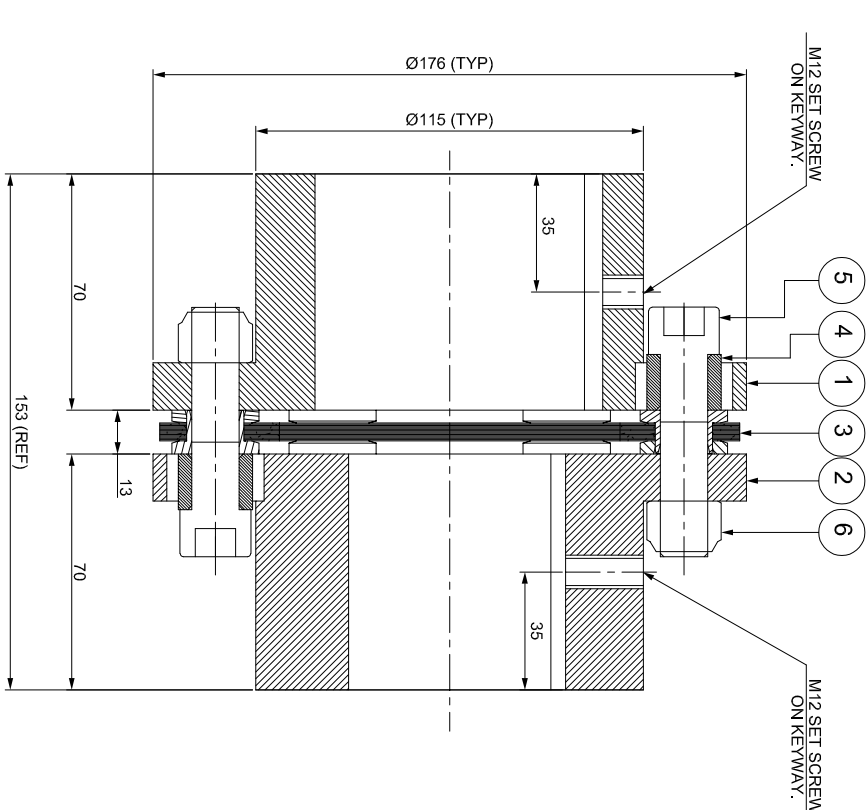
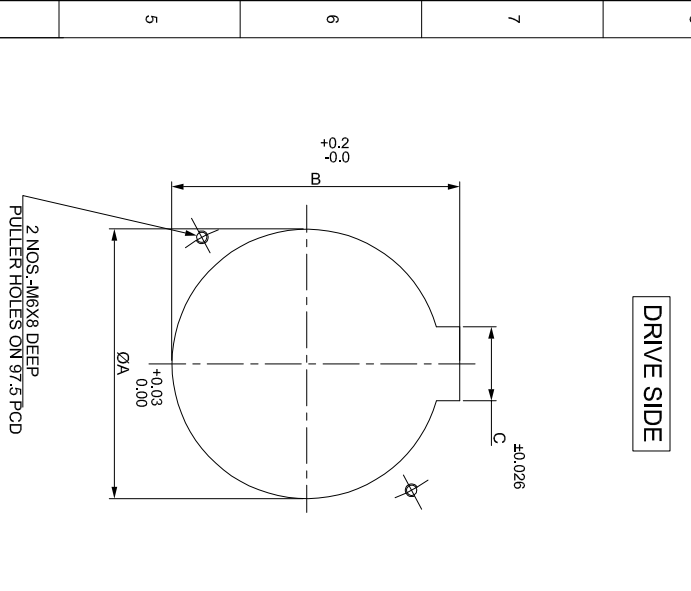


J	I	H	G	F	E	D	C	B	A
SAP CODE									



APPLICATION DETAILS	
RATED POWER	-
RATED SPEED	-
RATED TORQUE	-
A.S.F.	-
COUPLING SPECIFICATIONS	
COUPLING RATING	36.3 kW @ 100 RPM
CONTINUOUS TORQUE	3466 Nm
PEAK TORQUE	6932 Nm
SHORT CIRCUIT TORQUE	12131 Nm
MAX. BORE	80 mm
MAX. SPEED	4400 RPM
WEIGHT (Approx.)	14.0 kg
INERTIA (WK <sup>2</sup> )	0.064 kg.m <sup>2</sup>
GD <sup>2</sup>	0.256 kg.m <sup>2</sup>
TORSIONAL STIFFNESS	1.665 MNm/rad
CPLG DYNAMIC BALANCING	GR. 2.5, ISO 21940-11
MAX. MISALIGNMENT	
AXIAL	± 1 mm
ANGULAR	0.75° PER STACK

NOTE:-  
TIGHTENING TORQUE :-  
1) SR.NO.5 COUPLING BOLT = 136 Nm

REV	DMRN NO.	DESCRIPTION	REV. BY	APPD. BY	DATE

SR.NO.	DESCRIPTION	MATERIAL	QTY.
6	NYLOCK NUT	GR. 10	6
5	COUPLING BOLT	AH BOLT GR. 12.9 (ASTM 574M)	6
4	SLEEVE	ASTM A 1040	6
3	ELEMENT BLADE ASSEMBLY	AI SI SS 301	1
2	DRIVEN HUB (I)	ASTM A 1040	1
1	DRIVE HUB (I)	ASTM A 1040	1

TITLE:		RUMK-400 II /XXXX CPLG		REFER TABLE	
CUSTOMER NAME:		RATHI TRANSPOWER PVT. LTD.		PUNE, INDIA	
AUTHORITY/INITIALS		DRAWN		SIGN	
CHECKED		APPROVED		DATE	
SCALE: NTS		REF. NO.			
ANG. OF PROJ.		DRG. NO.:			
		L/RUMK-XXXXX0			