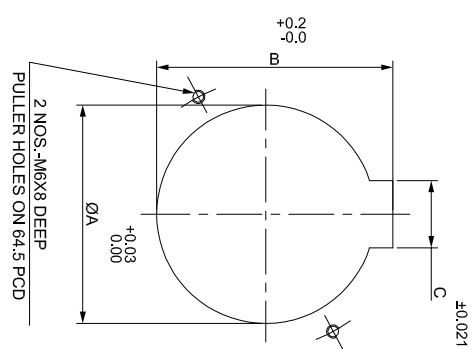
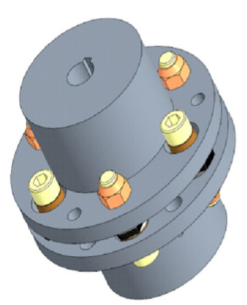
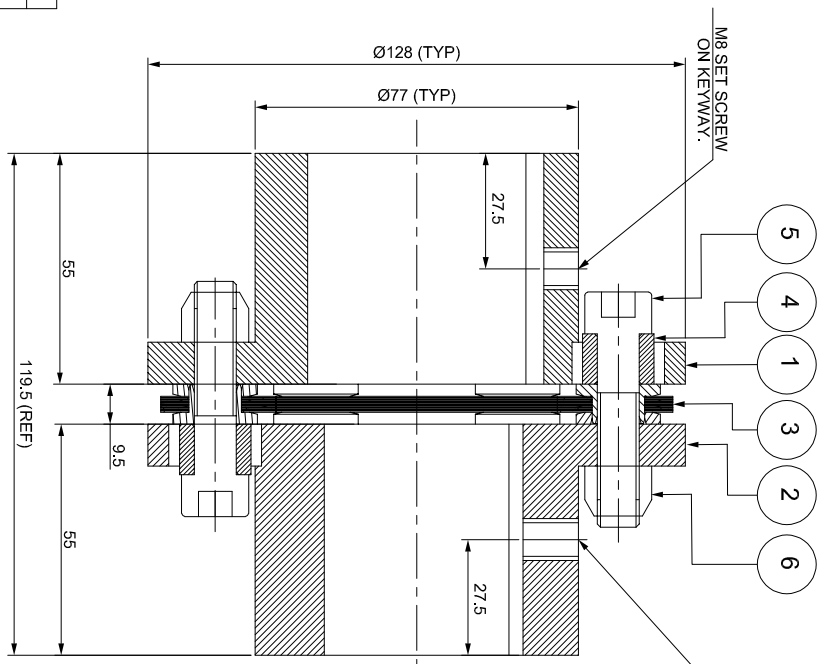
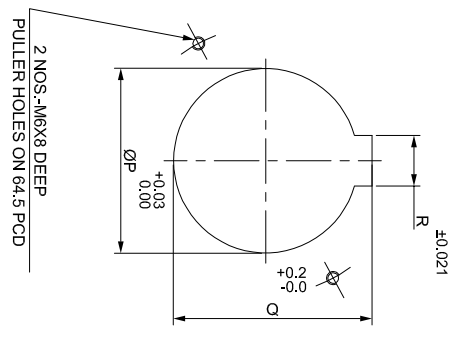


J	I	H	G	F	E	D	C	B	A
---	---	---	---	---	---	---	---	---	---

**DRIVE SIDE**



**DRIVEN SIDE**



8	SAP CODE	
7	APPLICATION DETAILS	
6	RATED POWER	-
5	RATED SPEED	-
4	RATED TORQUE	-
3	A.S.F.	-
2	COUPLING SPECIFICATIONS	
1	COUPLING RATING	12.6 kW @ 100 RPM
	CONTINUOUS TORQUE	1203 Nm
	PEAK TORQUE	2406 Nm
	SHORT CIRCUIT TORQUE	4211 Nm
	MAX. BORE	52 mm
	MAX. SPEED	5200 RPM
	WEIGHT (Approx.)	5.8 kg
	INERTIA (WK <sup>2</sup> )	0.014 kg.m <sup>2</sup>
	GD*2	0.056 kg.m <sup>2</sup>
	TORSIONAL STIFFNESS	0.529 MNm/rad
	CPLG DYNAMIC BALANCING	GR. 2.5, ISO 21940-11
	MAX. MISALIGNMENT	
	AXIAL	± 1 mm
	ANGULAR	0.75° PER STACK

NOTE:-  
TIGHTENING TORQUE :-  
1) SR.NO.5 COUPLING BOLT = 49 Nm

REV	DMRN NO.	DESCRIPTION	REV. BY	APPD. BY	DATE

SR.NO.	DESCRIPTION	MATERIAL	QTY.
6	NYLOCK NUT	GR. 10	6
5	COUPLING BOLT	AH BOLT GR. 12.9 (ASTM 574M)	6
4	SLEEVE	ASTM A 1040	6
3	ELEMENT BLADE ASSEMBLY	ANSI SS 301	1
2	DRIVEN HUB (I)	ASTM A 1040	1
1	DRIVE HUB (I)	ASTM A 1040	1

TITLE: RUMK-170 II /XXXX CPLG		MATERIAL: REFER TABLE	
CUSTOMER NAME: RATHI TRANSPOWER PVT. LTD.		RATHI TRANSPOWER PVT. LTD.	
PUNE, INDIA		PUNE, INDIA	
ANG. OF PROJ.:	DRG. NO.:	L/RUMK-XXXXX/0	
CHECKED:	APPROVED:	SCALE: NTS	
AUTHORITY/INITIALS:	SIGN:	DATE:	