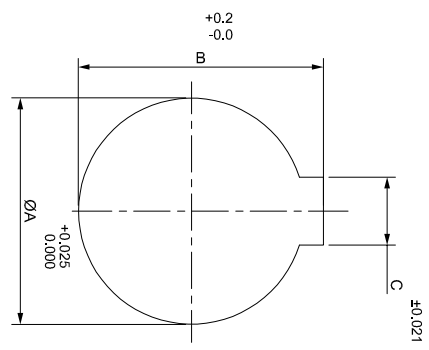
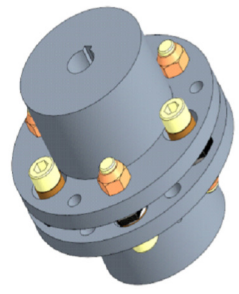
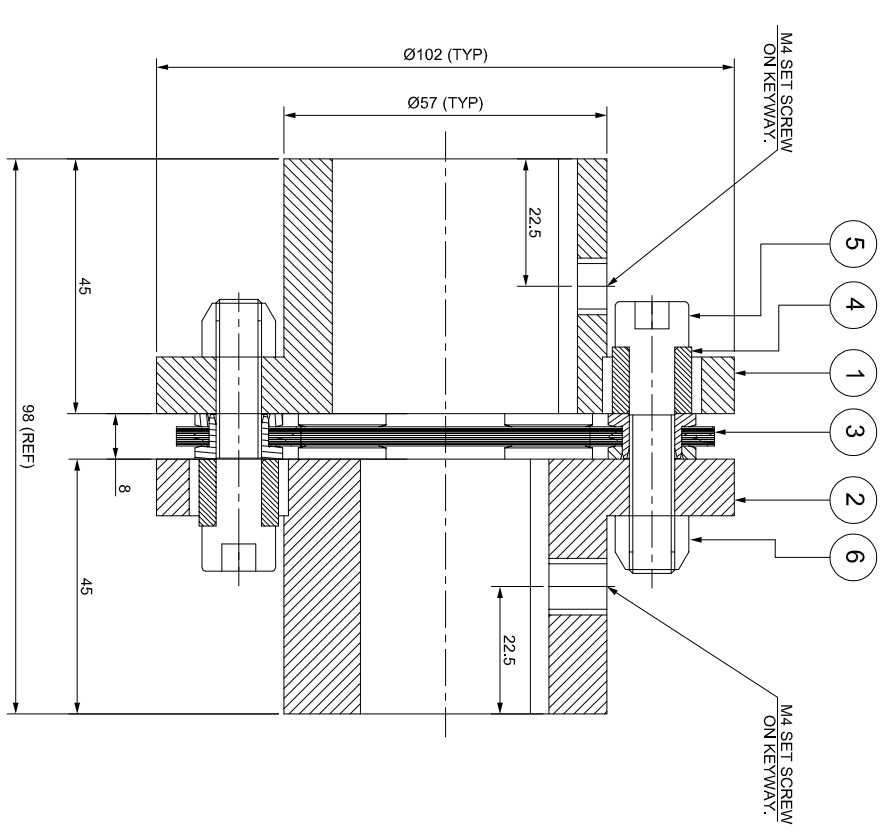
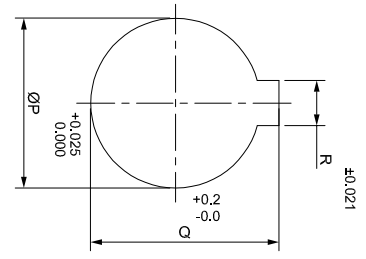


J	I	H	G	F	E	D	C	B	A
---	---	---	---	---	---	---	---	---	---

DRIVE SIDE



DRIVEN SIDE



4	APPLICATION DETAILS	
	APPLICATION	-
	RATED POWER	-
	RATED SPEED	-
	RATED TORQUE	-
	AS.F.	-
3	COUPLING SPECIFICATIONS	
	COUPLING RATING	6.5 kW @ 100 RPM
	CONTINUOUS TORQUE	621 Nm
	PEAK TORQUE	1242 Nm
	SHORT CIRCUIT TORQUE	2174 Nm
	MAX. BORE	40 mm
	MAX. SPEED	6000 RPM
	WEIGHT (Approx.)	3.2 kg
	INERTIA (WK ²)	0.008 kg.m ²
	GD ²	0.032 kg.m ²
	TORSIONAL STIFFNESS	0.248 MNm/rad
	CPLG DYNAMIC BALANCING	GR. 2.5 , ISO 21940-11
	MAX. MISALIGNMENT	
	AXIAL	± 1 mm
	ANGULAR	0.75° PER STACK

8	SAP CODE	
7		
6		
5		
4		
3		
2		
1		
E/		

NOTE:-
TIGHTENING TORQUE :-
1) SR.NO.5 COUPLING BOLT = 25 Nm

SR.NO.	DESCRIPTION	MATERIAL	QTY.
6	CLEVELOCK NUT	GR. 10	6
5	COUPLING BOLT	AH BOLT GR. 12.9 (ASTM 574M)	6
4	SLEEVE	ASTM A 1040	6
3	ELEMENT BLADE ASSEMBLY	ALSI SS 301	1
2	DRIVEN HUB (I)	ASTM A 1040	1
1	DRIVE HUB (I)	ASTM A 1040	1

TITLE: RLMK-95 II /XXXX CPLG		REFER TABLE	
CUSTOMER NAME: RATHNI TRANSPOWER PVT. LTD.			
ANG. OF PROU.		DRG.NO.: L/RLMK-XXXXX0	
APPROVED		SCALE: NTS	
DRAWN		REF. NO. -	
CHECKED		DATE -	
AUTHORITY INITIALS		SIGN -	