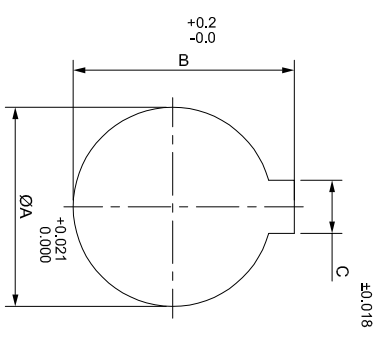
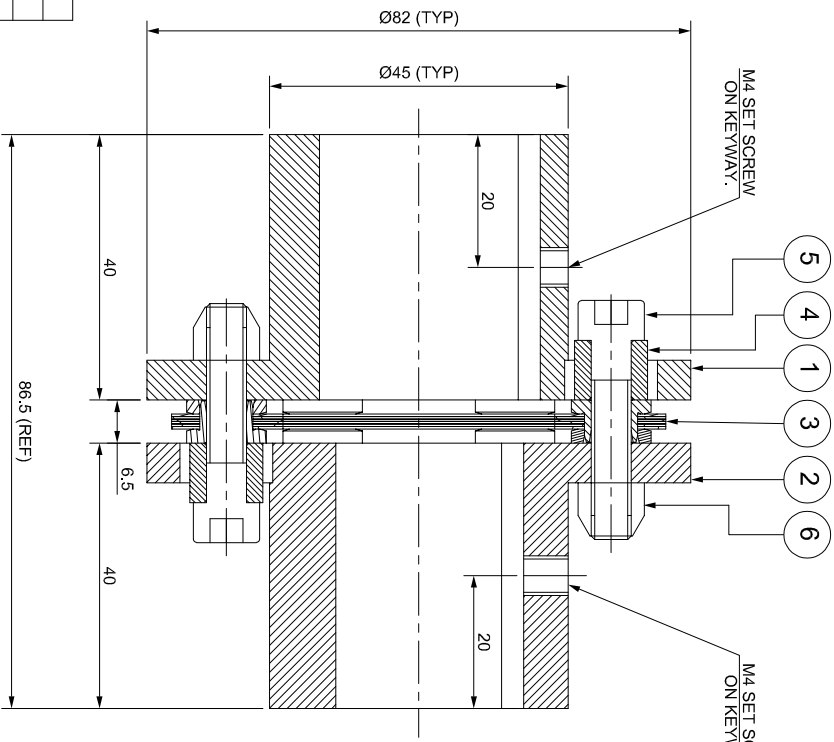
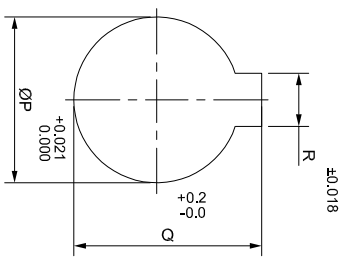


SAP CODE

DRIVE SIDE



DRIVEN SIDE



APPLICATION DETAILS

APPLICATION	-
RATED POWER	-
RATED SPEED	-
RATED TORQUE	-
A.S.F.	-

COUPLING SPECIFICATIONS

COUPLING RATING	2.4 kW @ 100 RPM
CONTINUOUS TORQUE	229 Nm
PEAK TORQUE	458 Nm
SHORT CIRCUIT TORQUE	802 Nm
MAX. BORE	30 mm
MAX. SPEED	7000 RPM
WEIGHT (Approx.)	1.80 kg
INERTIA (WK ²)	0.002 kgm ²
GD ²	0.008 kgm ²
TORSIONAL STIFFNESS	0.093 MNm/rad
CPLG DYNAMIC BALANCING	GR. 2.5, ISO 21940-11
MAX. MISALIGNMENT	
AXIAL	± 1 mm
ANGULAR	0.75° PER STACK

NOTE:-
TIGHTENING TORQUE :-
1) SR.NO.5 COUPLING BOLT = 10 Nm

SR.NO.	DESCRIPTION	MATERIAL	AUTHORITY/INITIALS	SIGN	DATE
6	CLEVELOCK NUT				
5	COUPLING BOLT	GR. 10			
4	SLEEVE	AH BOLT GR. 12.9 (ASTM 574M)			
3	ELEMENT BLADE ASSEMBLY	ASTM A 1040			
2	DRIVEN HUB (I)	AISI SS 301			
1	DRIVE HUB (I)	ASTM A 1040			

TITLE:	RLMK-35 I/ XXXX CPLG	MATERIAL:	
CUSTOMER NAME:		REFER TABLE	
SCALE:	NTS	APPROVED:	
REF. NO.:		CHECKED:	
		DRAWN:	

REV. DMRN NO.	DESCRIPTION	REV. BY	APPD. BY	DATE

