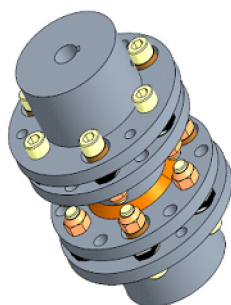
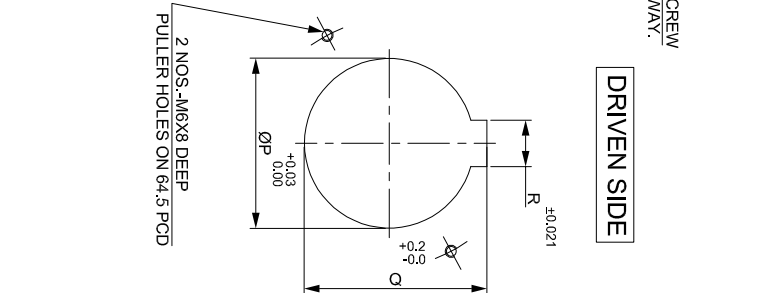
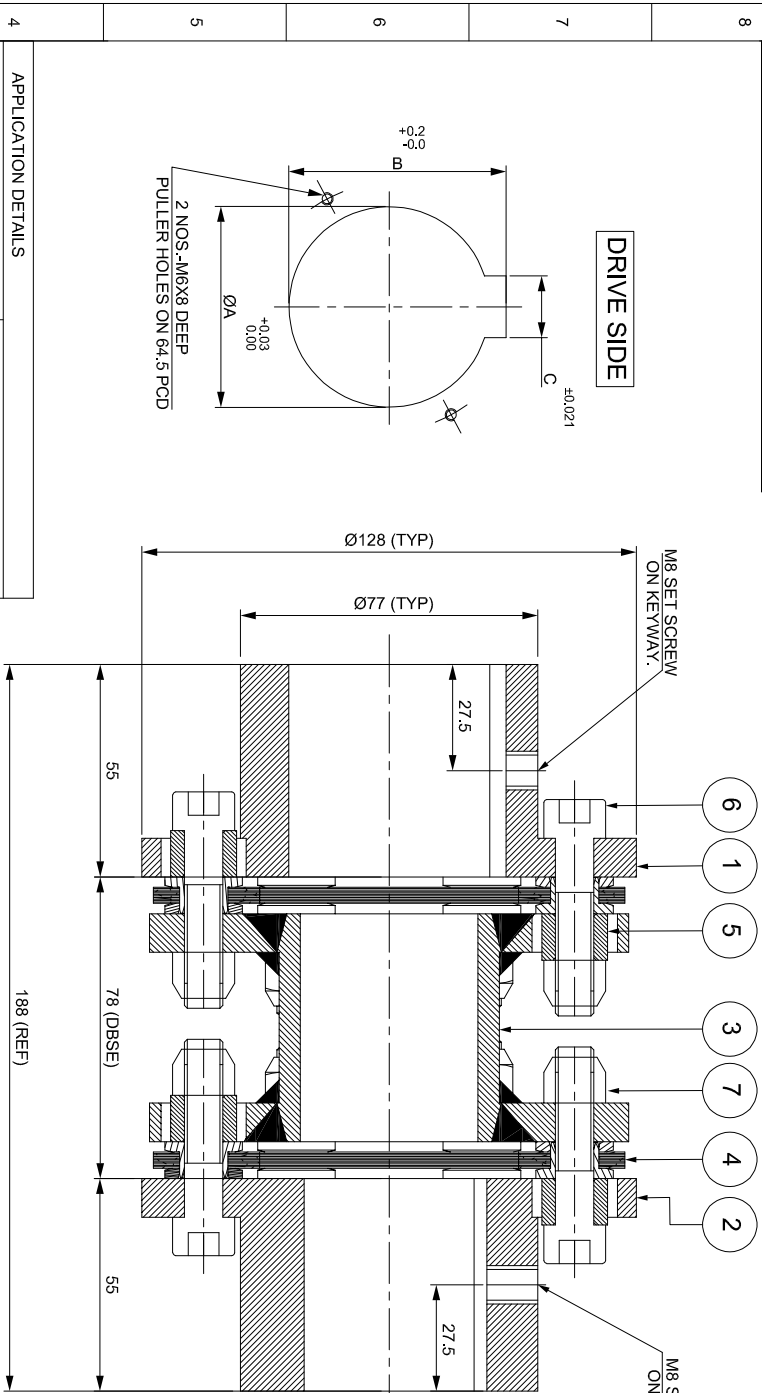


J I H G F E D C B A

SAP CODE

DRIVE SIDE

DRIVEN SIDE



APPLICATION DETAILS	
APPLICATION	-
RATED POWER	-
RATED SPEED	-
RATED TORQUE	-
A.S.F.	-

COUPLING SPECIFICATIONS	
COUPLING RATING	12.6 kW @ 100 RPM
CONTINUOUS TORQUE	1203 Nm
PEAK TORQUE	2406 Nm
SHORT CIRCUIT TORQUE	4211 Nm
MAX. BORE	52 mm
MAX. SPEED	5200 RPM
WEIGHT (Approx.)	9.040 kg
INERTIA (WK <sup>2</sup> )	0.014 kg.m <sup>2</sup>
GD <sup>2</sup>	0.056 kg.m <sup>2</sup>
TORSIONAL STIFFNESS	0.176 MNm/rad
CPLG DYNAMIC BALANCING	GR. 2.5, ISO 21940-11
MAX. MISALIGNMENT	± 1 mm
AXIAL	0.75° PER STACK
ANGULAR	1.02 mm
RADIAL	

REV.	DMRN NO.	DESCRIPTION	REV. BY	APPD. BY	DATE

SR. NO.	DESCRIPTION	MATERIAL	AUTHORITY/INITIALS	SIGN	DATE	QTY.
1	DRIVE HUB (I)	ASTM A 1040				1
2	DRIVEN HUB (I)	ASTM A 1040				1
3	SPACER	ASTM A 1068, ASTM A-36 / ASTM A 1040				1
4	ELEMENT BLADE ASSEMBLY	ASTM A 1040				2
5	SLEEVE	ASTM A 1040				12
6	COUPLING BOLT	AH BOLT GR. 12.9 (ASTM 574M)				12
7	NYLOCK NUT	GR. 10				12

TITLE: RLM-170(78)II /XXXX CPLG

CUSTOMER NAME: RATHI TRANSPOWER PVT. LTD. PUNE, INDIA

SCALE: NTS

REF. NO.:

DRG. NO.: L/RLM-XXXXX/0