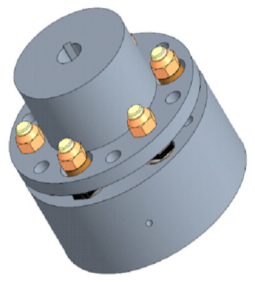
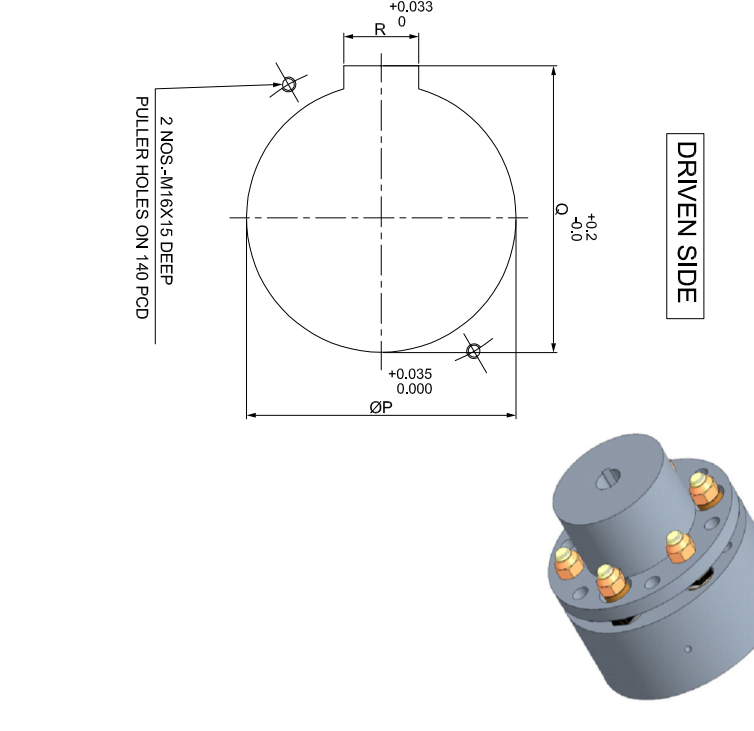
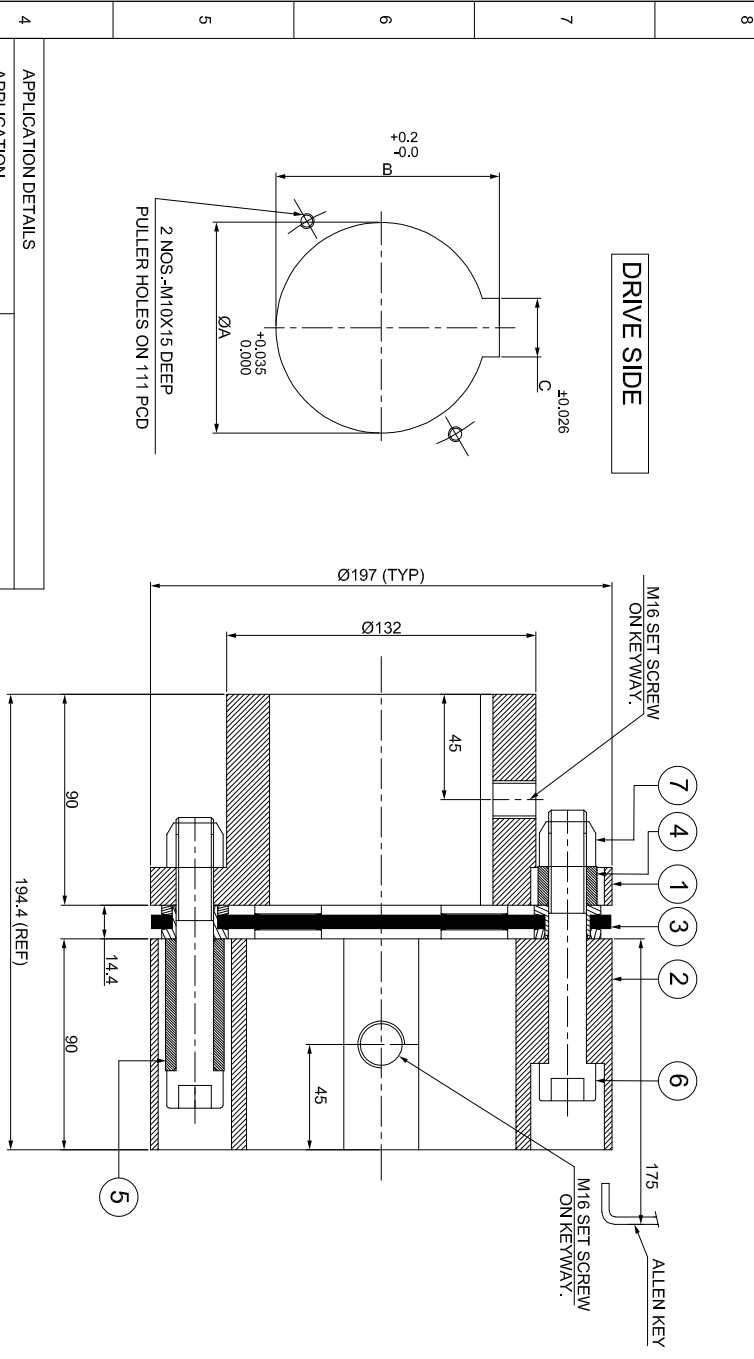


J	I	H	G	F	E	D	C	B	A
SAP CODE									



4	APPLICATION DETAILS	-
	RATED POWER	-
	RATED SPEED	-
	RATED TORQUE	-
	A.S.F.	-
3	COUPLING SPECIFICATIONS	-
	COUPLING RATING	58.5 kW @ 100 RPM
	CONTINUOUS TORQUE	5586 Nm
	PEAK TORQUE	11172 Nm
	SHORT CIRCUIT TORQUE	19551 Nm
	MAX. BORE	HUB I = 90 mm HUB II = 115 mm
	MAX. SPEED	4200 RPM
	WEIGHT (Approx.)	23.199 kg
	INERTIA (WK <sup>2</sup> )	0.135 kg.m <sup>2</sup>
	GD <sup>v2</sup>	0.540 kg.m <sup>2</sup>
	TORSIONAL STIFFNESS	1.271 MNm/rad
1	CPLG DYNAMIC BALANCING	API 671 4th EDN METHOD II
	MAX. MISALIGNMENT	-
	AXIAL	± 2 mm
	ANGULAR	0.75° PER STACK

NOTE:-  
TIGHTENING TORQUE :-  
1) SR.NO.6 COUPLING BOLT = 211 Nm

REV	DMRN NO.	DESCRIPTION	REV. BY	APPD. BY	DATE

7	NYLOCK NUT	GR. 10	6
6	COUPLING BOLT	AH BOLT GR. 12.9 (ASTM 574M)	6
5	SLEEVE (II)	ASTM A 1040	3
4	SLEEVE (I)	ASTM A 1040	3
3	ELEMENT BLADE ASSEMBLY	ANSI SS 301	1
2	DRIVE HUB (II)	ASTM A 1040	1
1	DRIVEN HUB (I)	ASTM A 1040	1