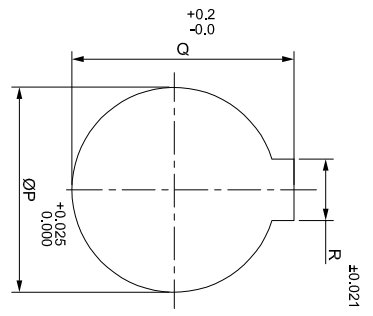
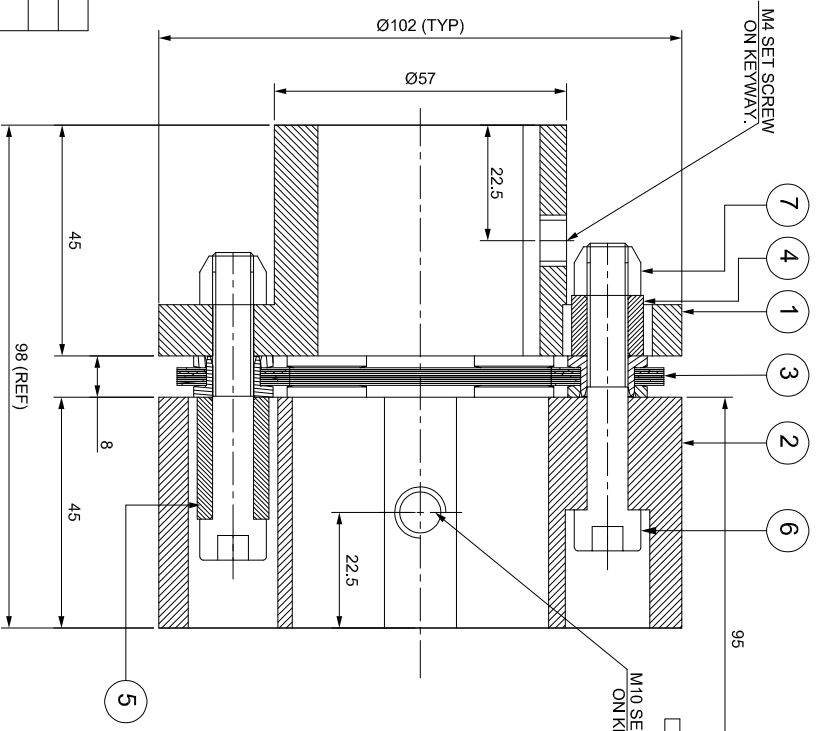
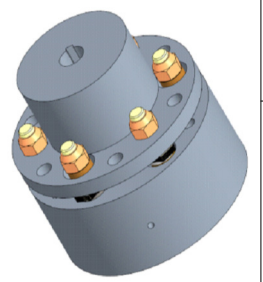
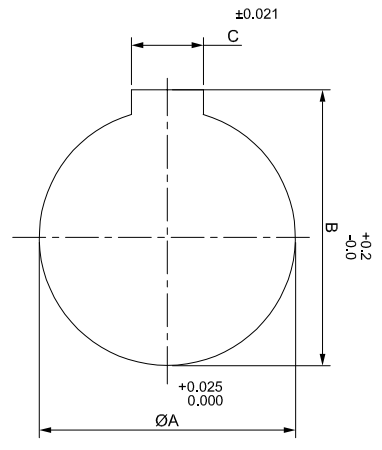


J	I	H	G	F	E	D	C	B	A
---	---	---	---	---	---	---	---	---	---

**DRIVEN SIDE**



**DRIVE SIDE**



4	APPLICATION DETAILS	-
	RATED POWER	-
	RATED SPEED	-
	RATED TORQUE	-
	A.S.F.	-
3	COUPLING SPECIFICATIONS	
	COUPLING RATING	6.5 kW @ 100 RPM
	CONTINUOUS TORQUE	621 Nm
	PEAK TORQUE	1242 Nm
	SHORT CIRCUIT TORQUE	2174 Nm
	MAX. BORE	HUB I = 40 mm HUB II = 50 mm
2	MAX. SPEED	6000 RPM
	WEIGHT (Approx.)	3.455 kg
	INERTIA (WK <sup>2</sup> )	0.005 kg.m <sup>2</sup>
	GD <sup>2</sup>	0.020 kg.m <sup>2</sup>
	TORSIONAL STIFFNESS	0.187 MNm/rad
1	CPLG DYNAMIC BALANCING	GR. 2.5, ISO 21940-11
	MAX. MISALIGNMENT	
	AXIAL	± 1 mm
	ANGULAR	0.75° PER STACK

NOTE:-  
TIGHTENING TORQUE :-  
1) SR.NO.6 COUPLING BOLT = 25 Nm

REV.	DMRN NO.	DESCRIPTION	REV. BY	APPD. BY	DATE

TITLE: RUMK-95 I/II /XXXX CPLG	REFER TABLE
CUSTOMER NAME:	
SR.NO.	DESCRIPTION
7	CLEVELOCK NUT
6	COUPLING BOLT
5	SLEEVE (II)
4	SLEEVE (I)
3	ELEMENT BLADE ASSEMBLY
2	DRIVE HUB (II)
1	DRIVEN HUB (I)

MATERIAL: RUMK-95 I/II /XXXX CPLG	REFER TABLE
AUTHORITY/INITIALS	
DRAWN	
CHECKED	
APPROVED	
SCALE: NTS	
REF. NO.	
ANG. OF PROJ.	
DRG. NO.:	
L/RUMK-XXXXX/0	