

J  
SAP CODE

I

H

G

F

E

D

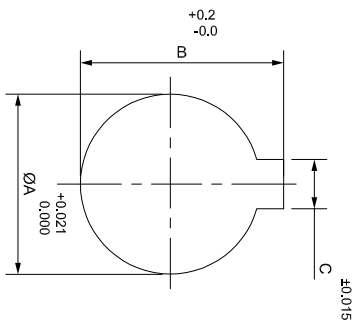
C

B

A

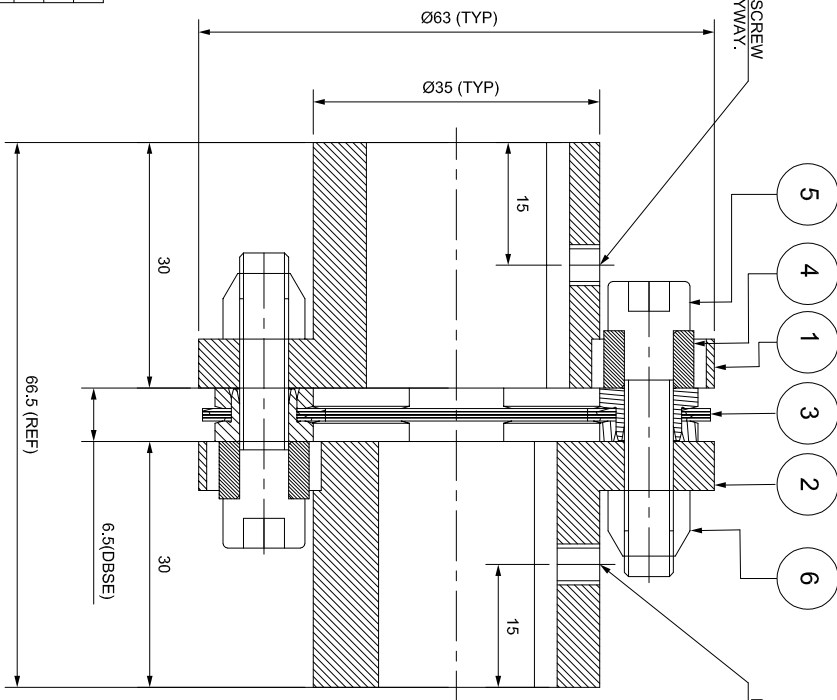
8

DRIVE SIDE

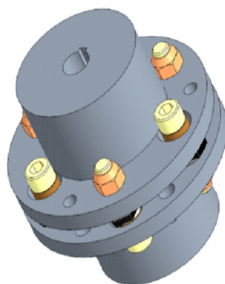
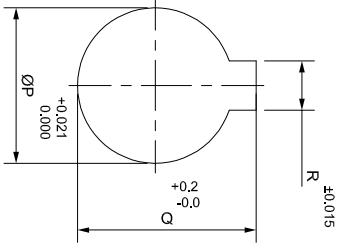


M4 SET SCREW  
ON KEYSWAY.

M4 SET SCREW  
ON KEYSWAY.



DRIVEN SIDE



4

APPLICATION DETAILS

APPLICATION	-
RATED POWER	-
RATED SPEED	-
RATED TORQUE	-
A.S.F.	-

COUPLING SPECIFICATIONS

COUPLING RATING	1 kW @ 100 RPM
CONTINUOUS TORQUE	95 Nm
PEAK TORQUE	190 Nm
SHORT CIRCUIT TORQUE	333 Nm
MAX. BORE	22 mm
MAX. SPEED	7500 RPM
WEIGHT (Approx.)	1.58 kg
INERTIA (WK <sup>2</sup> )	0.0004 kg.m <sup>2</sup>
GD <sup>2</sup>	0.0016 kg.m <sup>2</sup>

1

TORSIONAL STIFFNESS	0.012 MNm/rad
CPLG DYNAMIC BALANCING	GR. 2.5, ISO 21940-11
MAX. MISALIGNMENT	
AXIAL	± 1 mm
ANGULAR	0.75° PER STACK

NOTE:-  
TIGHTENING TORQUE :-  
1) SR.NO.5 COUPLING BOLT = 10 Nm

REV	DMRN NO.	DESCRIPTION	REV. BY	APPD. BY	DATE

6	CLEVELOCK NUT	GR. 10			
5	COUPLING BOLT	AH BOLT GR. 12.9 (ASTM 574M)			6
4	SLEEVE	ASTM A 1040			6
3	ELEMENT BLADE ASSEMBLY	AISI SS 301			1
2	DRIVEN HUB (I)	ASTM A 1040			1
1	DRIVE HUB (I)	ASTM A 1040			1

TITLE:	RLMK-10 II /XXXX CPLG	MATERIAL:	
CUSTOMER NAME:		REFER TABLE	
		DRAWN	-
		CHECKED	-
		APPROVED	-
		SCALE: NTS	
		REF. NO.	-

ANG. OF PROD.	DRG. NO.:
	L/RLMK-XXXX0