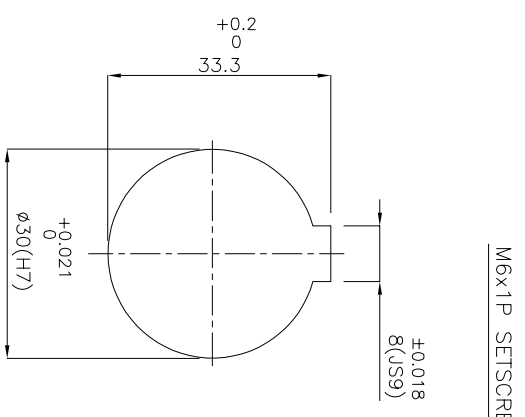
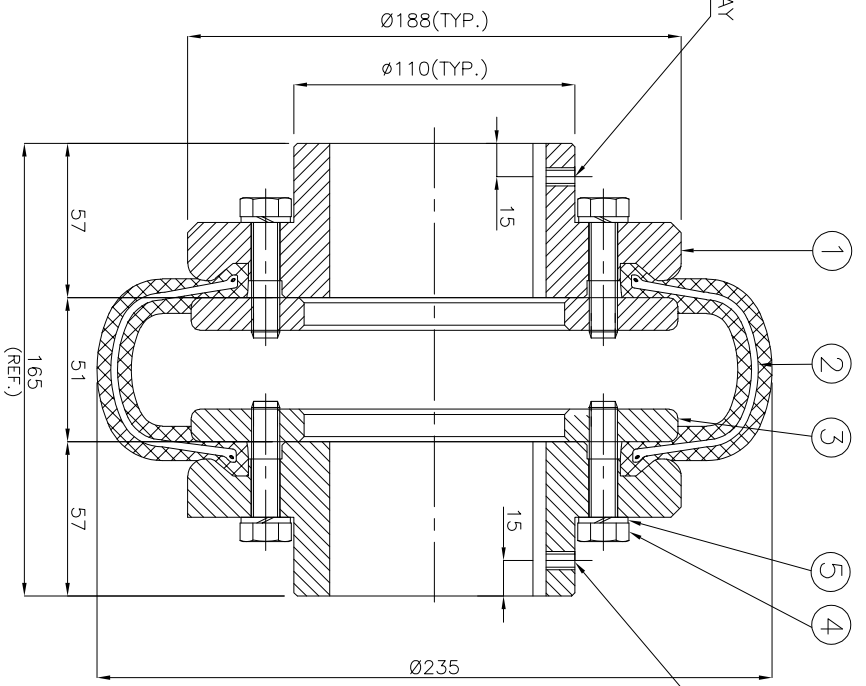
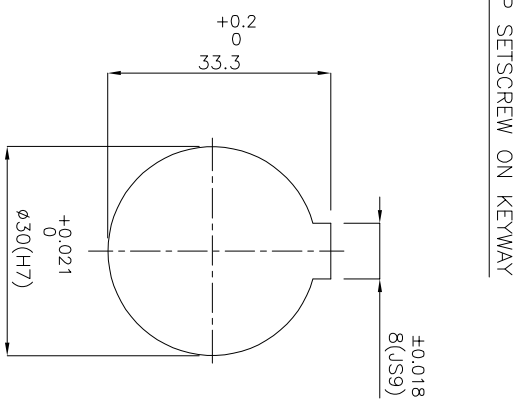


DRIVE END



DRIVEN END



APPLICATION DETAILS

| | |
|--------------|---|
| APPLICATION | - |
| RATED POWER | - |
| RATED SPEED | - |
| RATED TORQUE | - |
| A.S.F. | - |

COUPLING SPECIFICATIONS

| | |
|----------------------------|------------------------|
| COUPLING RATING | 5.24 kW @ 100 RPM |
| RATED TORQUE | 0.50 kNm. |
| PEAK TORQUE | 1.01 kNm. |
| MAX. SPEED | 3000 rpm. |
| MAX. BORE | 75 mm |
| WEIGHT(Approx.) | 14.37 kg |
| INERTIA (WK ²) | 0.065 kgm ² |

COUPLING HUBS DYNAMICALLY BALANCED TO GR.6.3 AS PER ISO: 1940-1.

MAX. MISALIGNMENTS

| | |
|--------------------|----------|
| AXIAL DEFLECTION | ±3.0 mm. |
| ANGULAR DEFLECTION | 2' |
| RADIAL DEFLECTION | 2.4 mm |

| SR NO | DESCRIPTION | MATERIAL | QTY. |
|-------|---------------|---------------------|------|
| 1 | HUB | CI IS-210 GR.FG 260 | 2 |
| 2 | TYRE | NATURAL RUBBER | 1 |
| 3 | CLAMPING RING | M.S. IS 2062 | 2 |
| 4 | HEX HEAD BOLT | HIGH TENSILE STEEL | 12 |
| 5 | SPRING WASHER | SPRING STEEL | 12 |

TITLE: **T-9 B/----- CPLG.**

CUSTOMER NAME:

MATERIAL: REFER TABLE

| | | |
|--------------------|------|------|
| AUTHORITY/INITIALS | SIGN | DATE |
| DRAWN | - | - |
| CHECKED | - | - |
| APPROVED | - | - |

SCALE: NTS REF. No.:



RATHI TRANSPOWER PVT LTD
PUNE 411006

DRG. No.:

This drawing / information / design is the property of Rathi Transpower Pvt. Ltd. It is confidential & must not be made public or copied without prior written authorization & is subjected to recall at any time. Acceptance of this drawing constitutes full agreement with these conditions