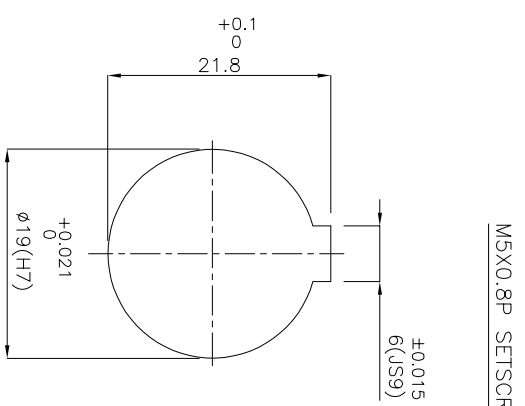
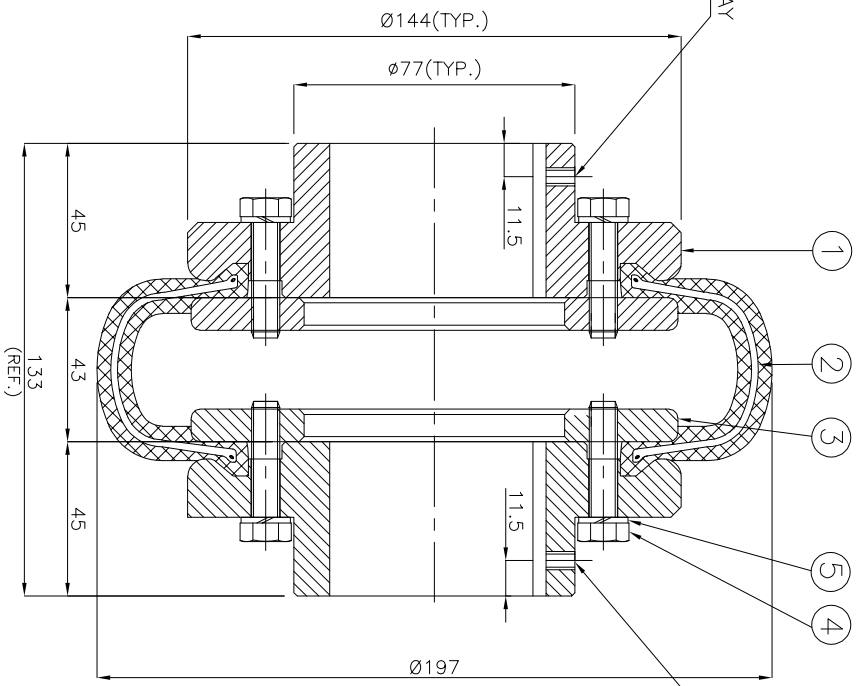
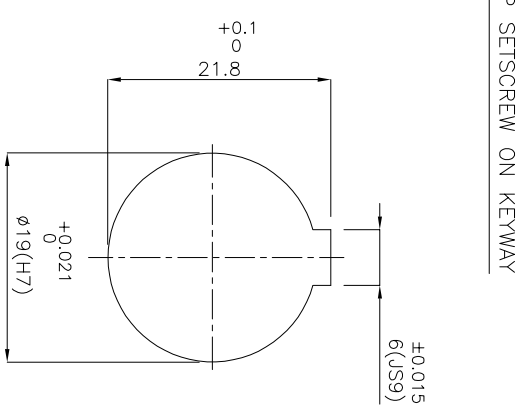


DRIVE END



DRIVEN END



APPLICATION DETAILS

APPLICATION	-
RATED POWER	-
RATED SPEED	-
RATED TORQUE	-
A.S.F.	-

COUPLING SPECIFICATIONS

COUPLING RATING	2.62 kW @ 100 RPM
RATED TORQUE	0.250 kNm.
PEAK TORQUE	0.500 kNm.
MAX. SPEED	3600 rpm.
MAX. BORE	50 mm
WEIGHT (Approx.)	8.0 Kg
INERTIA (WK ²)	0.020 kgm ²

COUPLING HUBS DYNAMICALLY BALANCED TO GR.6.3 AS PER ISO: 1940-1.

MAX. MISALIGNMENTS

AXIAL DEFLECTION	±2.3 mm.
ANGULAR DEFLECTION	2'
RADIAL DEFLECTION	1.9 mm

SR NO	DESCRIPTION	MATERIAL	QTY.
5	SPRING WASHER	SPRING STEEL	10
4	HEX HEAD BOLT	HIGH TENSILE STEEL	10
3	CLAMPING RING	M.S. IS 2062	2
2	TYRE	NATURAL RUBBER	1
1	HUB	CI S-210 GR.FG 260	2

TITLE: **T-7 B /----- CPLG.**

CUSTOMER NAME:

MATERIAL: REFER TABLE

AUTHORITY/ INITIALS	SIGN	DATE
DRAWN	-	-
CHECKED	-	-
APPROVED	-	-


RATHI TRANSPOWER PVT LTD
 PUNE 411006
 DRG. No.: -----
 3 EN-F-112