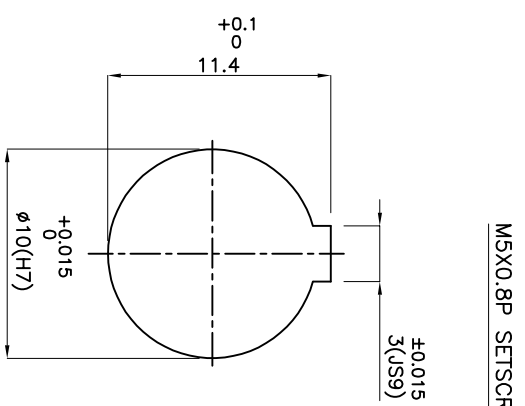
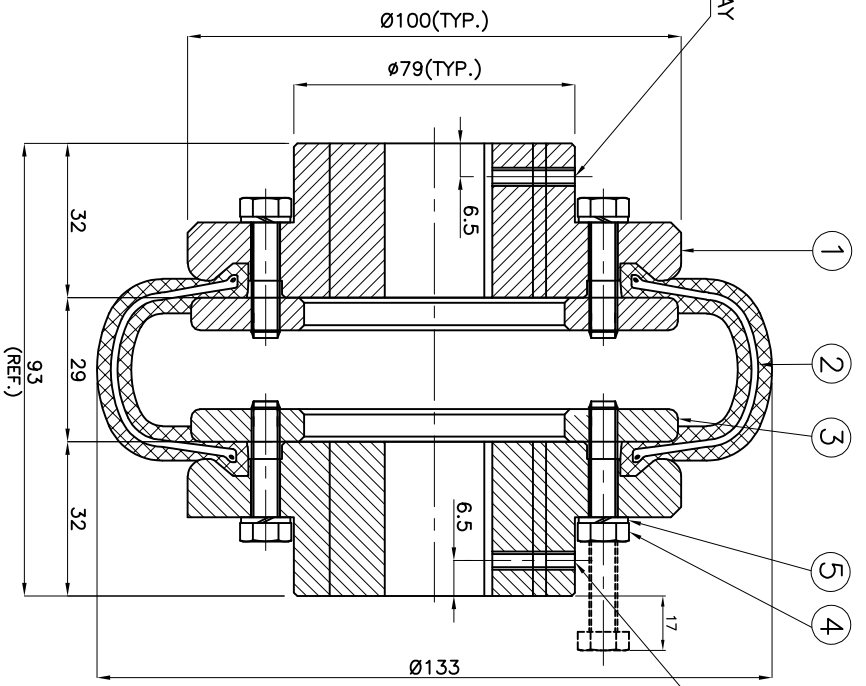
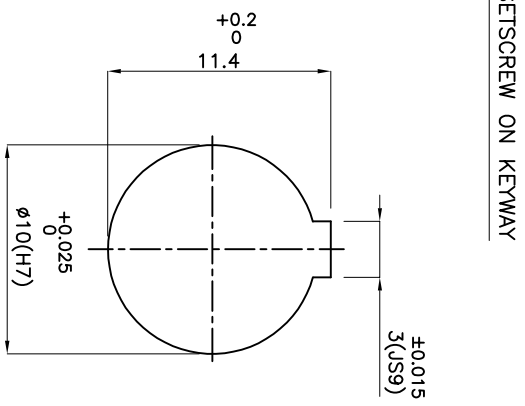


DRIVE END



DRIVEN END



APPLICATION DETAILS

APPLICATION	-
RATED POWER	-
RATED SPEED	-
RATED TORQUE	-
A.S.F.	-

COUPLING SPECIFICATIONS

COUPLING RATING	0.69 kW @ 100 RPM
RATED TORQUE	0.066kNm.
PEAK TORQUE	0.0132 kNm.
MAX. SPEED	4500 rpm.
MAX. BORE	38 mm
WEIGHT(Approx.)	3.46 Kg
INERTIA (MK ²)	0.0035 Kgm ²

COUPLING HUBS DYNAMICALLY BALANCED TO GR.6.3 AS PER ISO: 1940-1.

MAX. MISALIGNMENTS

AXIAL DEFLECTION	±1.7 mm.
ANGULAR DEFLECTION	2'
RADIAL DEFLECTION	1.3 mm

SR NO	DESCRIPTION	MATERIAL	QTY.
5	SPRING WASHER	SPRING STEEL	8
4	HEX HEAD BOLT	HIGH TENSILE STEEL	8
3	CLAMPING RING	M.S. IS 2062	2
2	TYRE	NATURAL RUBBER	1
1	HUB	CI S-210 GR.FG 260	2


TITLE: **T-5 B /----- CPLG.**

CUSTOMER NAME:

MATERIAL: REFER TABLE

AUTHORITY/ INITIALS	SIGN	DATE
DRAWN	-	-
CHECKED	-	-
APPROVED	-	-
SCALE: NTS/REF. No.:	-	-

REV/ DWRN NO.	DESCRIPTION	REV. BY	APPD. BY	DATE


Lovejoy
RATHI TRANSPOWER PVT LTD
 PUNE 411006
 DRG. No.: -----
 3 EN-F-112