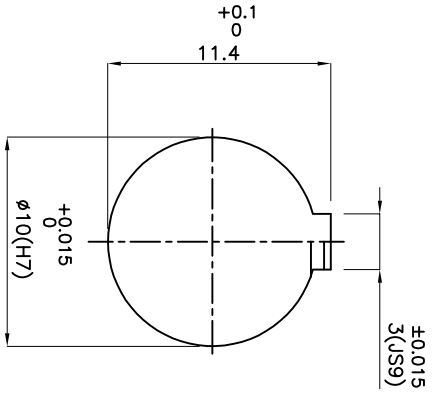
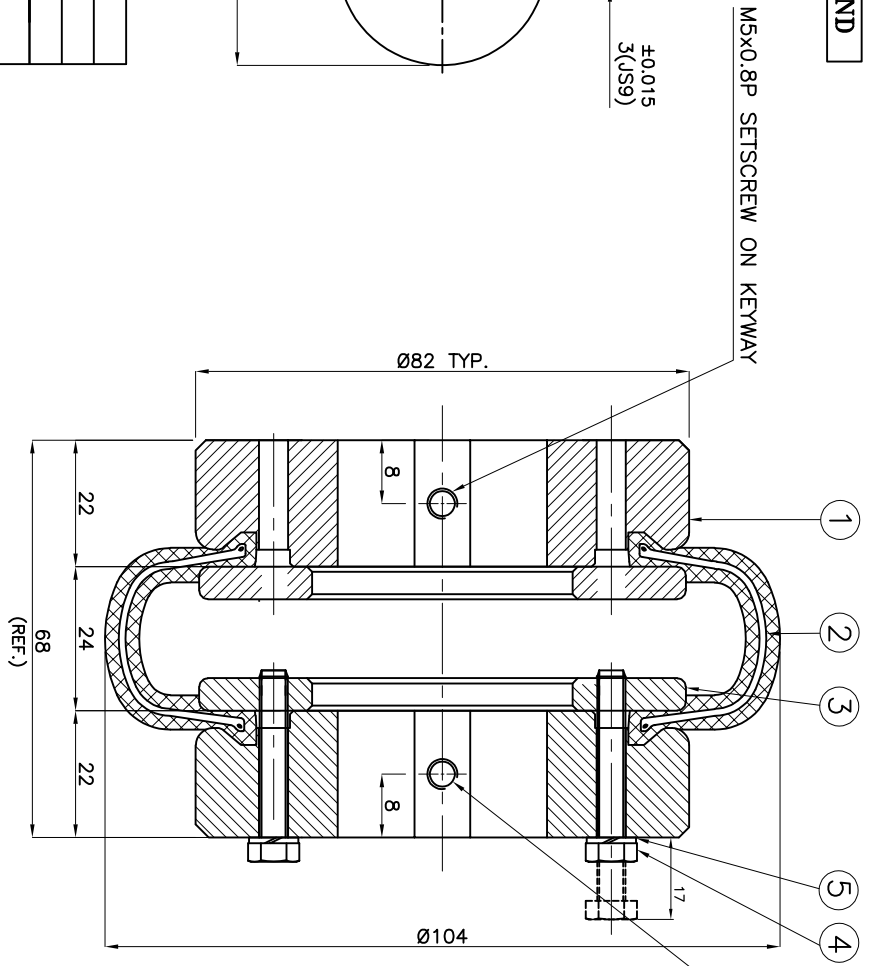
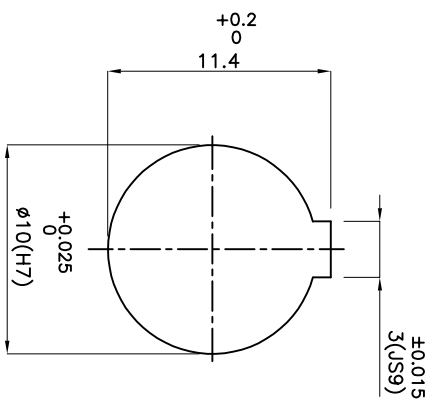


DRIVE END



DRIVEN END



APPLICATION DETAILS

APPLICATION	-
RATED POWER	-
RATED SPEED	-
RATED TORQUE	-
A.S.F.	-

COUPLING SPECIFICATIONS

COUPLING RATING	0.25 kW @ 100 RPM
RATED TORQUE	0.024 kNm.
PEAK TORQUE	0.048 kNm.
MAX. SPEED	4500 rpm.
MAX. BORE	32 mm
WEIGHT(Approx.)	1.87 Kg
INERTIA (MK ²)	0.0016 Kgm ²

COUPLING HUBS DYNAMICALLY BALANCED TO GR.6.3 AS PER ISO: 1940-1.

MAX. MISALIGNMENTS

AXIAL DEFLECTION	±1.3 mm.
ANGULAR DEFLECTION	2°
RADIAL DEFLECTION	1.1 mm

24 E/XXXX

SERIAL NO.	DESCRIPTION	MATERIAL	QTY.
5	SPRING WASHER	SPRING STEEL	8
4	HEX HEAD BOLT	HIGH TENSILE STEEL	8
3	CLAMPING RING	M.S. IS 2062	2
2	TYRE	NITRILE RUBBER	1
1	HUB	CI S-210 GR.FG 260	2

TITLE: **T-4 B /----- CPLG.**

CUSTOMER NAME:

MATERIAL: REFER TABLE

APPROVED: _____

AUTHORITY/ INITIALS / SIGN / DATE

SCALE: NTS/REF. No.: _____


Lovejoy
RATHI TRANSPOWER PVT LTD
 PUNE 411006
 DRG. No.: _____
 3 EN-F-112