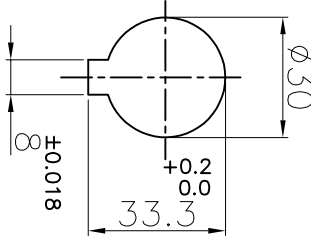


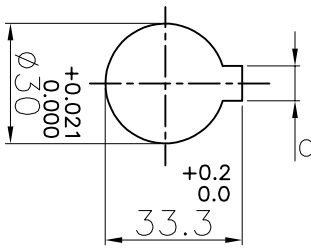
**DRIVE END**

+0.021  
0.000



**DRIVEN END**

+0.021  
0.000



M6 X 1P SET SCREW ON KEYWAY

M6 X 1P SET SCREW ON KEYWAY

**APPLICATION DETAILS**

APPLICATION	-
RATED POWER	- KW
RATED SPEED	- RPM
RATED TORQUE	- Nm
A.S.F.	-

**COUPLING SPECIFICATIONS**

COUPLING RATING	0.49 KW AT 100 RPM
RATED TORQUE	46.40 Nm
MAX. BORE	30 mm
WEIGHT (Approx.)	1.19 Kg
INERTIA (WK <sup>2</sup> )	8.00x10 <sup>-4</sup> Kgm <sup>2</sup>

CPLG HUBS DYNAMICALLY BALANCED TO GR.6.3 AS PER ISO 21940-11.

**MAX. MISALIGNMENTS**

AXIAL DEFLECTION	±1 mm
ANGULAR DEFLECTION	1°
RADIAL DEFLECTION	0.4 mm

SR NO	DESCRIPTION	MATERIAL	QTY.
4	OUTSIDE RING BOLT	CH SCREW-SS	3
3	OUTSIDE RING	CRCA	1
2	SNAP WRAP	NITRILE RUBBER	1
1	HUB	CI GR FG 260	2

TITLE: SW-99/----- CPLG REFER TABLE  
CUSTOMER NAME: -

REV/ DMRN NO.	DESCRIPTION	REV. BY	DATE

**Lovejoy** RATHI TRANSPOWER PVT LTD PUNE 411006  
 MATERIAL: AUTHORITY INITIALS SIGN DATE  
 DRAWN: - CHECKED: - APPROVED: -  
 SCALENES REF: No.: DRG. No.:  
 3 EN-F-112