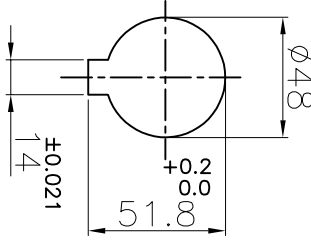


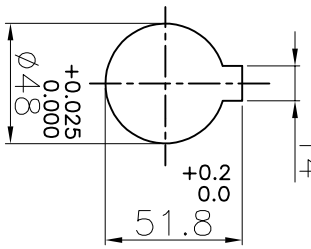
DRIVE END

+0.025
0.000



DRIVEN END

+0.025
0.000



M10 X 1.5P SET SCREW ON KEYWAY

M10 X 1.5P SET SCREW ON KEYWAY

APPLICATION DETAILS

| | |
|--------------|-------|
| APPLICATION | - |
| RATED POWER | - KW |
| RATED SPEED | - RPM |
| RATED TORQUE | - Nm |
| A.S.F. | - |

COUPLING SPECIFICATIONS

| | |
|----------------------------|--|
| COUPLING RATING | 2.2 KW AT 100 RPM |
| RATED TORQUE | 211.5 Nm |
| MAX. BORE | 48 mm |
| WEIGHT (Approx.) | 4.05 Kg |
| INERTIA (WK ²) | 4.62x10 ⁻³ Kgm ² |

CPLG HUBS DYNAMICALLY BALANCED TO GR.6.3 AS PER ISO 21940-11.

MAX. MISALIGNMENTS

| | |
|--------------------|---------|
| AXIAL DEFLECTION | ±1.5 mm |
| ANGULAR DEFLECTION | 1° |
| RADIAL DEFLECTION | 0.4 mm |

| SR NO | DESCRIPTION | MATERIAL | QTY. |
|-------|-------------------|--------------|------|
| 4 | OUTSIDE RING BOLT | CH SCREW-SS | 3 |
| 3 | OUTSIDE RING | CRCA | 1 |
| 2 | SNAP WRAP | POLYURETHANE | 1 |
| 1 | HUB | CI GR FG 260 | 2 |

TITLE: SW-150/-CPLG REFER TABLE
CUSTOMER NAME: -

| REV. / DRAW NO. | DESCRIPTION | REV. BY | DATE |
|-----------------|-------------|---------|------|
| | | | |
| | | | |
| | | | |

Lovejoy RATHI TRANSPOWER PVT LTD PUNE 411006

DRG. No.: - / -

AUTHORITY INITIALS SIGN DATE

DRAWN - - -

CHECKED - - -

APPROVED - - -

SCALE: REF. No.: -

This drawing / information / design is the property of Rathi Transpower Pvt. Ltd. It is confidential & must not be made public or copied without prior written authorization & is subjected to recall at any time. Acceptance of this drawing constitutes full agreement with these conditions