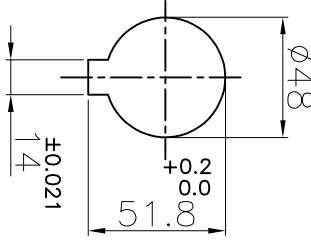


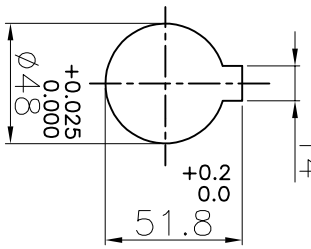
DRIVE END

+0.025
0.000



DRIVEN END

+0.025
0.000



APPLICATION DETAILS

APPLICATION	-
RATED POWER	- KW
RATED SPEED	- RPM
RATED TORQUE	- Nm
A.S.F.	-

COUPLING SPECIFICATIONS

COUPLING RATING	1.5 KW AT 100 RPM
RATED TORQUE	141 Nm
MAX. BORE	48 mm
WEIGHT (Approx.)	4.05 Kg
INERTIA (WK ²)	4.62x10 ⁻³ Kgm ²

CPLG HUBS DYNAMICALLY BALANCED TO GR.6.3 AS PER ISO 21940-11.

MAX. MISALIGNMENTS

AXIAL DEFLECTION	±1.5 mm
ANGULAR DEFLECTION	1°
RADIAL DEFLECTION	0.4 mm

SR NO	DESCRIPTION	MATERIAL	QTY.
4	OUTSIDE RING BOLT	CH SCREW-SS	3
3	OUTSIDE RING	CRCA	1
2	SNAP WRAP	NITRILE RUBBER	1
1	HUB	CI GR FG 260	2

TITLE: **SW-150/-** **CPLG REFER TABLE**

REV./CHGR NO.	DESCRIPTION	REV. BY	DATE

CUSTOMER NAME: **RATHI TRANSPOWER PVT LTD**
 PUNE 411006
 MATERIAL: **CH SCREW-SS**
 AUTHORITY INITIALS: **---** SIGN: **---** DATE: **---**
 DRAWN: **---** CHECKED: **---**
 APPROVED: **---** SCALEMETS REF. No.: **---**

This drawing / information / design is the property of Rathi Transpower Pvt. Ltd. It is confidential & must not be made public or copied without prior written authorization & is subjected to recall at any time. Acceptance of this drawing constitutes full agreement with these conditions