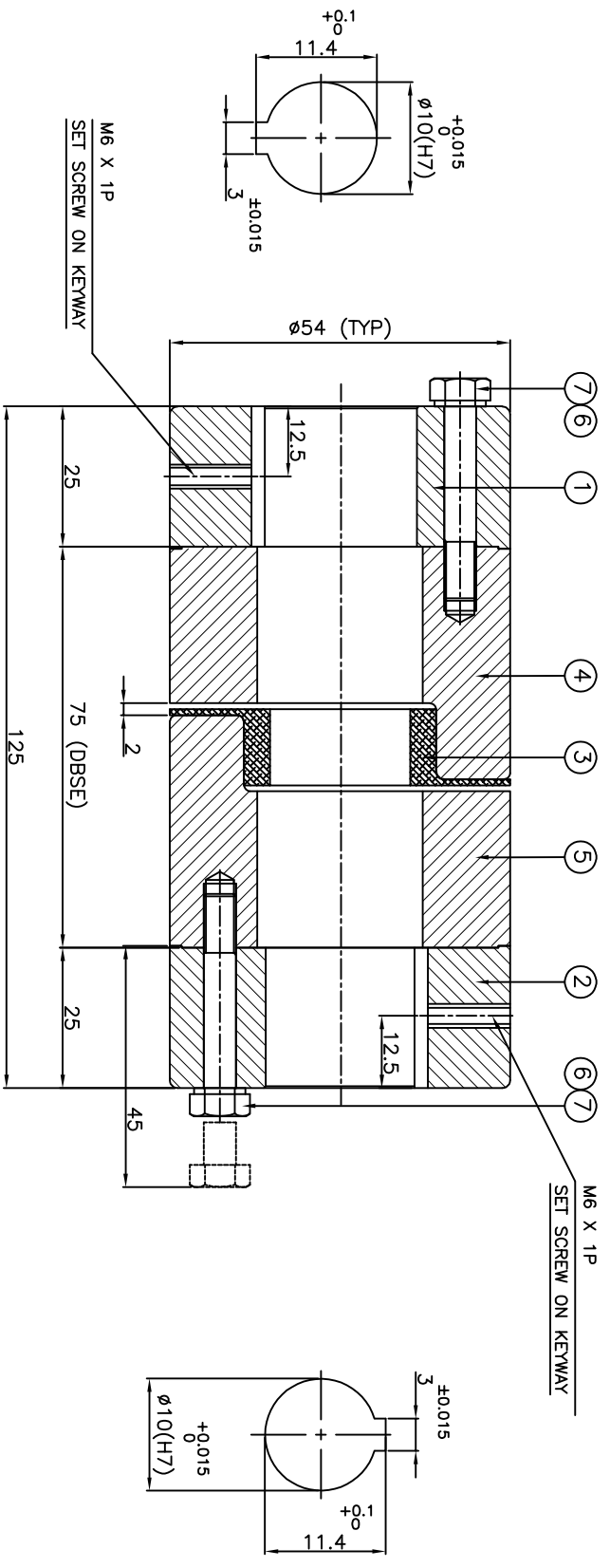


DRIVE END

DRIVEN END



APPLICATION DETAILS

APPLICATION	-
RATED POWER	- KW
RATED SPEED	- RPM
RATED TORQUE	- kNm
A.S.F	-

COUPLING SPECIFICATIONS

COUPLING RATING	0.33 kW @ 100 RPM
RATED TORQUE	31.7 Nm
MAX BORE	28 mm
WEIGHT (APPROX)	1.56 Kg
INERTIA WK ² (APPROX)	0.003 Kgm ²

CPLG COMPONENTS DYNAMICALLY BALANCED TO GR.6.3 AS PER ISO 21940-II.

MAXIMUM MISALIGNMENTS

AXIAL DEFLECTION	±1.0 mm
ANGULAR DEFLECTION	1°
RADIAL DEFLECTION	0.4 mm

13 E/A

REV/DMRN NO.	DESCRIPTION	REV. BY	APPD. BY	DATE

TITLE: **RRL-95(75) / - CPLG**

CUSTOMER NAME: **RATHI TRANSPOWER PVT LTD**

REF. No.: **3 EN-F-112, REV.1**

DRG. No.: **---**

SCALE: 1:1

APPROVED:

CHECKED:

DRAWN:

AUTHORITY INITIALS: **---**

SIGN: **---**

DATE: **---**

ITEM NO.	DESCRIPTION	MATERIAL	QTY.
7	COUPLING BOLT	HH BOLT GR.10.9	6
6	SPRING WASHER	SPRING STEEL	6
5	JAW BODY-2	C.I. GR. FG 260	1
4	JAW BODY-1	C.I. GR. FG 260	1
3	SPIDER	POLYURETHANE	1
2	HUB DRIVEN SIDE	C.I. GR. FG 260	1
1	HUB DRIVE SIDE	C.I. GR. FG 260	1