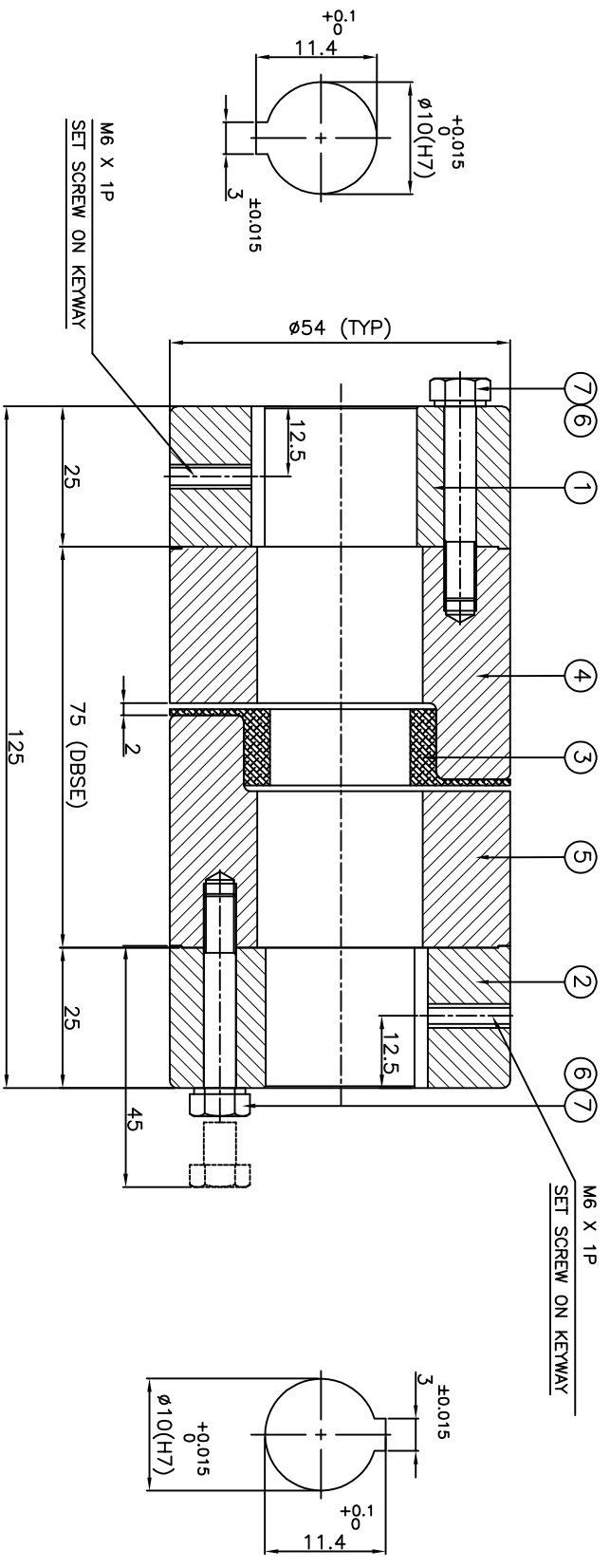


**DRIVE END**

**DRIVEN END**



**APPLICATION DETAILS**

APPLICATION	-
RATED POWER	- KW
RATED SPEED	- RPM
RATED TORQUE	- kNm
A.S.F	-

**COUPLING SPECIFICATIONS**

COUPLING RATING	0.221 kW @ 100 RPM
RATED TORQUE	21.1 Nm
MAX BORE	28 mm
WEIGHT (APPROX)	1.56 Kg
INERTIA WK <sup>2</sup> (APPROX)	0.003 Kgm <sup>2</sup>

CPLG COMPONENTS DYNAMICALLY BALANCED TO GR.6.3 AS PER ISO 21940-II.

**MAXIMUM MISALIGNMENTS**

AXIAL DEFLECTION	±1.0 mm
ANGULAR DEFLECTION	1°
RADIAL DEFLECTION	0.4 mm

13 E/A

REV/DMRN NO.	DESCRIPTION	REV. BY	APPD. BY	DATE

TITLE: **RRL-95(75) / - CPLG**

CUSTOMER NAME: **RATHI TRANSPOWER PVT LTD**

REF. No.: **3 EN-F-112, REV.1**

DATE: **---**

SCALE: 1:1

APPROVED: **---**

CHECKED: **---**

DRAWN: **---**

AUTHORITY INITIALS: **---**

SIGN: **---**

DATE: **---**

ITEM NO.	DESCRIPTION	MATERIAL	QTY.
1	HUB DRIVE SIDE	C.I. GR. FG 260	1
2	HUB DRIVEN SIDE	C.I. GR. FG 260	1
3	SPIDER	NITRILE RUBBER	1
4	JAW BODY-1	C.I. GR. FG 260	1
5	JAW BODY-2	C.I. GR. FG 260	1
6	SPRING WASHER	SPRING STEEL	6
7	COUPLING BOLT	HH BOLT GR.10.9	6