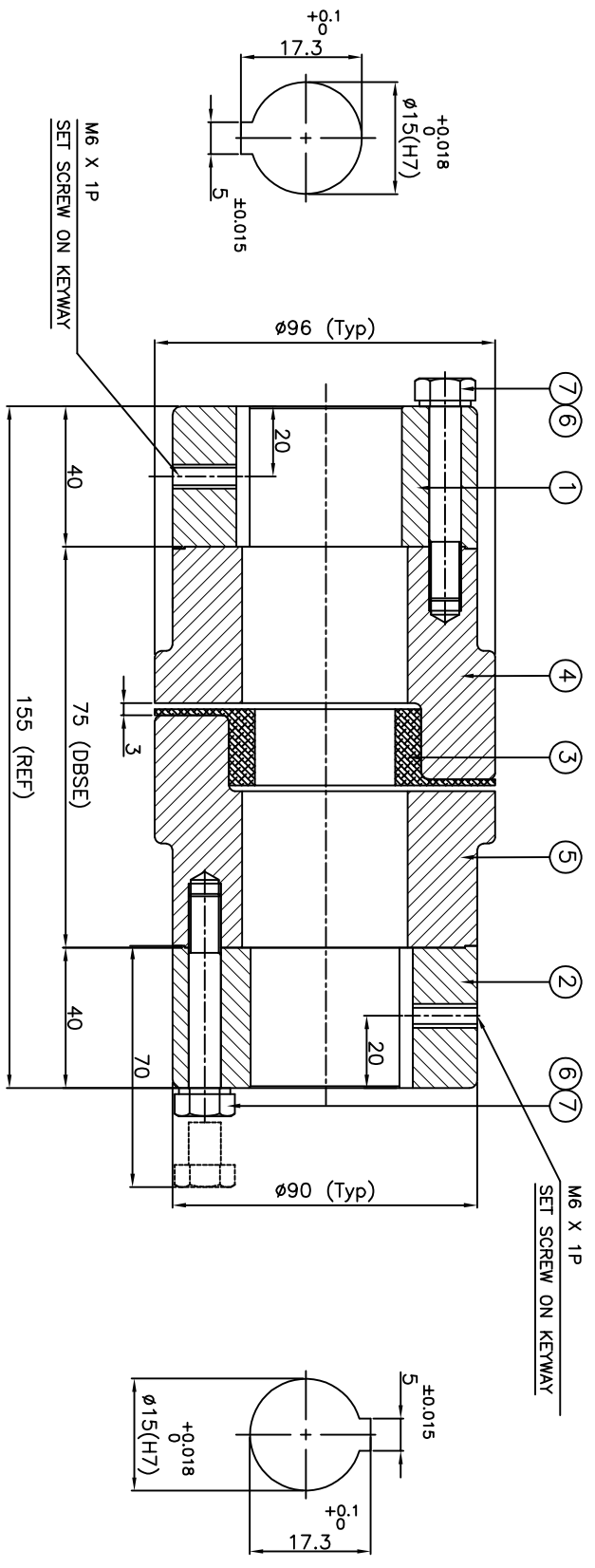


DRIVE END

DRIVEN END



APPLICATION DETAILS

APPLICATION	-
RATED POWER	- KW
RATED SPEED	- RPM
RATED TORQUE	- kNm
A.S.F	-

COUPLING SPECIFICATIONS

COUPLING RATING	2.2 KW @ 100 RPM
RATED TORQUE	211.5 Nm
MAX BORE	48 mm
WEIGHT (APPROX)	5.50 Kg
INERTIA WK ² (APPROX)	0.015 Kgm ²

CPLG COMPONENTS DYNAMICALLY BALANCED TO GR.6.3 AS PER ISO 21940-II.

MAXIMUM MISALIGNMENTS

AXIAL DEFLECTION	±1.5 mm
ANGULAR DEFLECTION	1°
RADIAL DEFLECTION	0.4 mm

13 E/A

REV/DMRN NO.	DESCRIPTION	REV. BY	APPD. BY	DATE

TITLE: **RRL-150(75)/- CPLG REFER TABLE**

CUSTOMER NAME: **-**

MATERIAL: **POLYURETHANE**

AUTHORITY INITIALS: **-** SIGN: **-** DATE: **-**

DRAWN: **-** CHECKED: **-** APPROVED: **-**

SCALE: 1:1 REF. No.: **-**

RATHI TRANSPOWER PVT LTD PUNE 411014 DRG. No.: **-**

ITEM NO.	DESCRIPTION	MATERIAL	QTY.
1	HUB DRIVE SIDE	C.I. GR. FG 260	1
2	HUB DRIVEN SIDE	C.I. GR. FG 260	1
3	SPIDER	POLYURETHANE	1
4	JAW BODY-1	C.I. GR. FG 260	1
5	JAW BODY-2	C.I. GR. FG 260	1
6	SPRING WASHER	SPRING STEEL	6
7	COUPLING BOLT	HH BOLT GR10.9	6