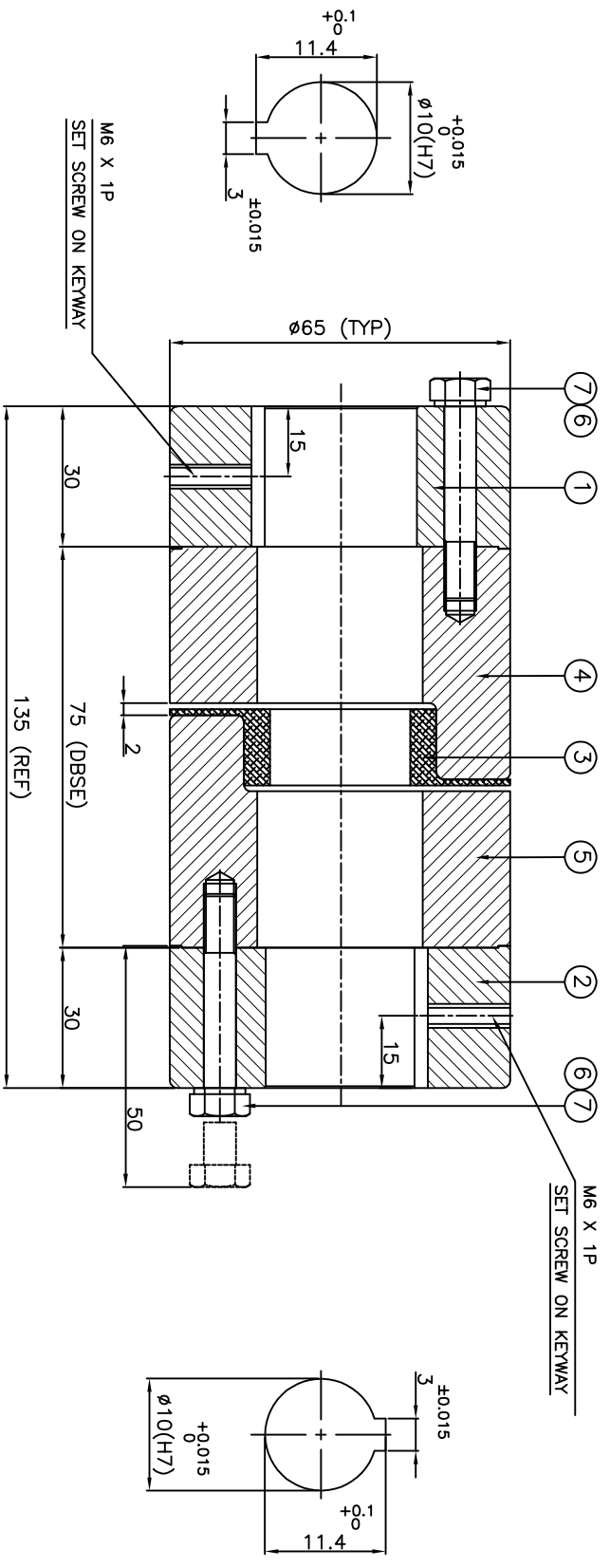


DRIVE END

DRIVEN END



APPLICATION DETAILS

| | |
|--------------|-------|
| APPLICATION | - |
| RATED POWER | - KW |
| RATED SPEED | - RPM |
| RATED TORQUE | - KNm |
| A.S.F | - |

COUPLING SPECIFICATIONS

| | |
|----------------------------------|------------------------|
| COUPLING RATING | 0.73 kW @ 100 RPM |
| RATED TORQUE | 69.6 Nm |
| MAX BORE | 38 mm |
| WEIGHT (APPROX) | 2.18 Kg |
| INERTIA WK ² (APPROX) | 0.004 Kgm ² |

CPLG COMPONENTS DYNAMICALLY BALANCED TO GR.6.3 AS PER ISO 1940-1.

MAXIMUM MISALIGNMENTS

| | |
|--------------------|---------|
| AXIAL DEFLECTION | ±1.0 mm |
| ANGULAR DEFLECTION | 1° |
| RADIAL DEFLECTION | 0.4 mm |

13 E/A

| REV/DMRN NO. | DESCRIPTION | REV. BY | APPD. BY | DATE |
|--------------|-------------|---------|----------|------|
| | | | | |
| | | | | |
| | | | | |

TITLE: **RRL-100(75)- CPLG REFER TABLE**

CUSTOMER NAME: **-**

MATERIAL: **POLYURETHANE**

AUTHORITY INITIALS: **-** SIGN: **-** DATE: **-**

DRAWN: **-** CHECKED: **-** APPROVED: **-**

SCALE: 1:1 REF. No.: **-**

DRG. No.: **-**

Lovejoy RATHI TRANSPOWER PVT LTD PUNE 411014

| ITEM NO. | DESCRIPTION | MATERIAL | QTY. |
|----------|-----------------|-----------------|------|
| 1 | HUB DRIVEN SIDE | C.I. GR. FG 260 | 1 |
| 2 | HUB DRIVEN SIDE | C.I. GR. FG 260 | 1 |
| 3 | SPIDER | POLYURETHANE | 1 |
| 4 | JAW BODY-1 | C.I. GR. FG 260 | 1 |
| 5 | JAW BODY-2 | C.I. GR. FG 260 | 1 |
| 6 | SPRING WASHER | SPRING STEEL | 6 |
| 7 | COUPLING BOLT | HH BOLT GR.10.9 | 6 |