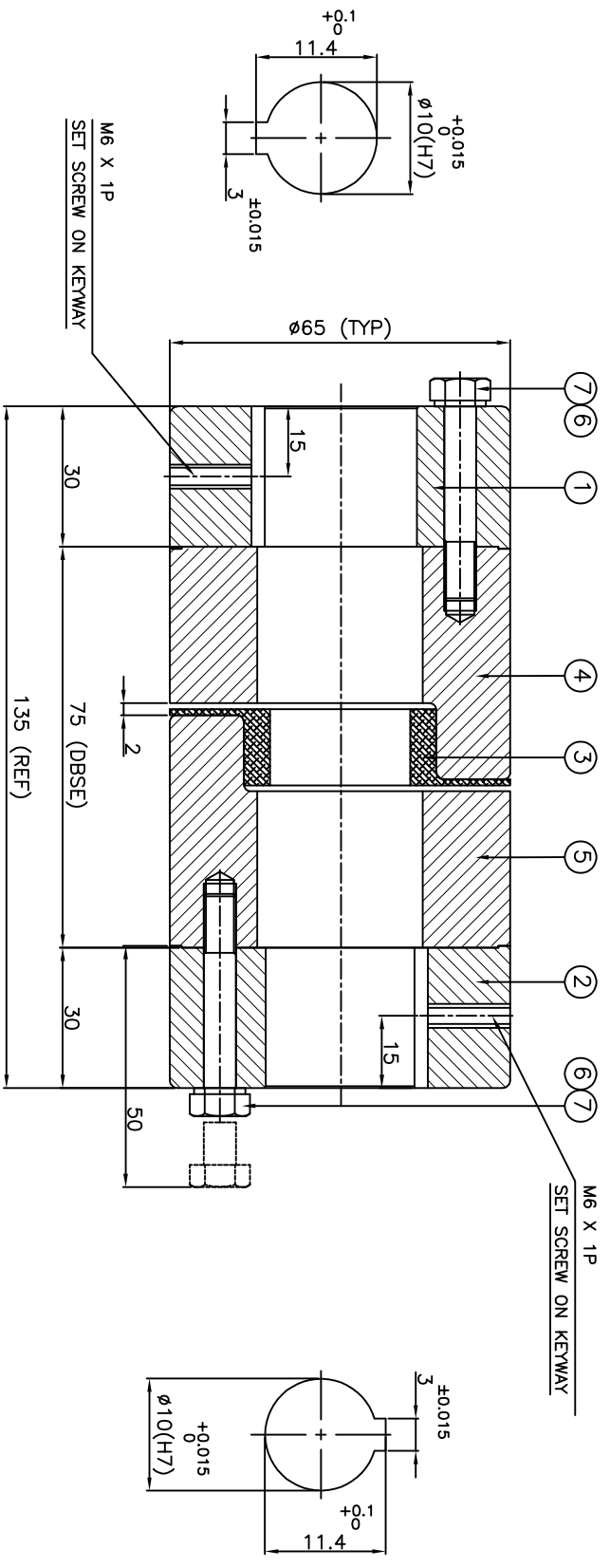


DRIVE END

DRIVEN END



APPLICATION DETAILS

APPLICATION	-
RATED POWER	- KW
RATED SPEED	- RPM
RATED TORQUE	- KNm
A.S.F	-

COUPLING SPECIFICATIONS

COUPLING RATING	0.49 kW @ 100 RPM
RATED TORQUE	46.4 Nm
MAX BORE	38 mm
WEIGHT (APPROX)	2.18 Kg
INERTIA WK ² (APPROX)	0.004 Kgm ²

CPLG COMPONENTS DYNAMICALLY BALANCED TO GR.6.3 AS PER ISO 1940-1.

MAXIMUM MISALIGNMENTS

AXIAL DEFLECTION	±1.0 mm
ANGULAR DEFLECTION	1°
RADIAL DEFLECTION	0.4 mm

E/A

REV/DMRN NO.	DESCRIPTION	REV. BY	APPD. BY	DATE

TITLE: **RRL-100(75)/- CPLG REFER TABLE**

CUSTOMER NAME: **-**

MATERIAL: **AUTHORITY INITIALS SIGN DATE**

APPROVED: **-**

SCALE: 1:1 REF. No.: **-**

DRG. No.: **---**

Lovejoy **RATHI TRANSPOWER PVT LTD PUNE 411014**

ITEM NO.	DESCRIPTION	MATERIAL	QTY.
7	COUPLING BOLT	HH BOLT GR.10.9	6
6	SPRING WASHER	SPRING STEEL	6
5	JAW BODY-2	C.I. GR. FG 260	1
4	JAW BODY-1	C.I. GR. FG 260	1
3	SPIDER	NITRILE RUBBER	1
2	HUB DRIVEN SIDE	C.I. GR. FG 260	1
1	HUB DRIVE SIDE	C.I. GR. FG 260	1