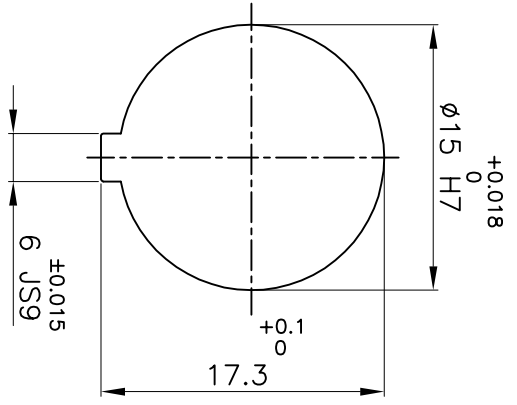
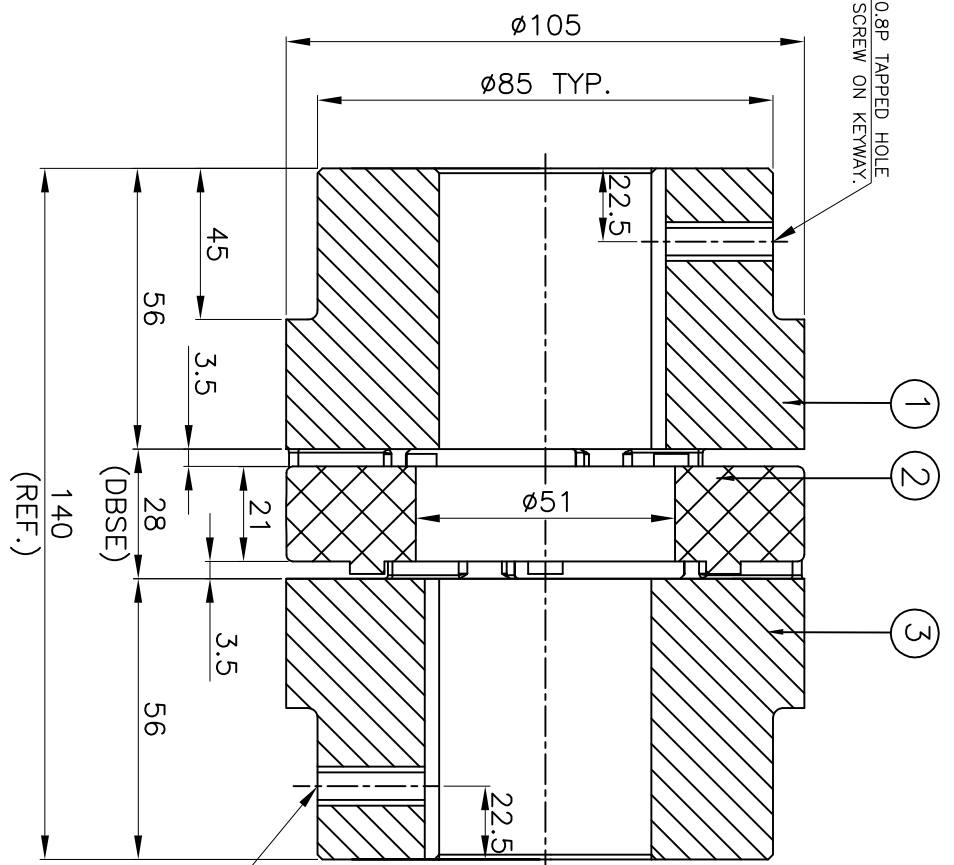


DRIVE SIDE



DRIVEN SIDE

(REF.)

M5X0.8P TAPPED HOLE FOR SET SCREW ON KEYWAY.

APPLICATION DETAILS

APPLICATION	-
RATED POWER	- KW
RATED SPEED	- RPM.
RATED TORQUE	- Nm
A.S.F.	-

COUPLING CAPACITY

COUPLING RATING	5.49KW AT 100RPM.
RATED TORQUE	525Nm
MAX. BORE TYPE-I	52mm
WEIGHT (APPROX)	4.4kg
INERTIA (WK ²)	6.2X10 ⁻³ kg-m ²

MAX. MISALIGNMENT

AXIAL	±3.0mm
ANGULAR	1°
PARALLEL	0.35mm

S/R NO	DESCRIPTION	MATERIAL	QTY.
3	HUB-I	C.I. IS:210 FG 260	1
2	SPIDER	POLYURETHANE (BLUE)	1
1	HUB-I	C.I. IS:210 FG 260	1

TITLE: **RRJ-48 I/1 /-----**
 CPLG.
 MATERIAL: **REFER TABLE**
 CUSTOMER NAME: **REFER TABLE**

REV.	DNRM NO.	DESCRIPTION	REV. BY	APPD. BY	DATE

Lovejoy
RATHI TRANSPOWER PVT LTD
 PUNE 411006
 Dwg No.: -----/---
 3 EN-F-112