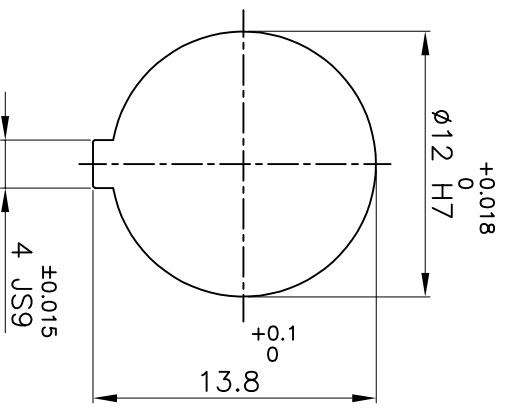
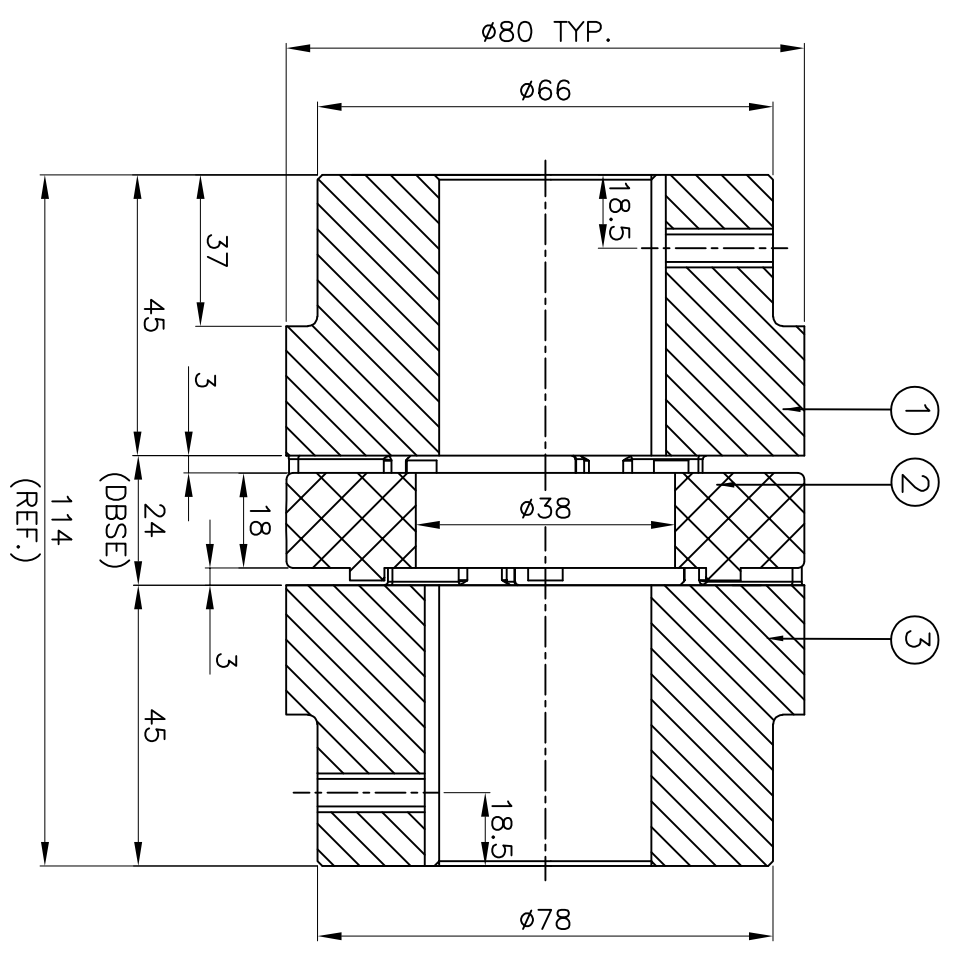


DRIVE SIDE



DRIVEN SIDE

(REF.)

APPLICATION DETAILS

APPLICATION	-
RATED POWER	- KW
RATED SPEED	- RPM
RATED TORQUE	- Nm
A.S.F.	-

COUPLING CAPACITY

COUPLING RATING	3.47KW AT 100RPM.
RATED TORQUE	332Nm
MAX. BORE TYPE-I & II	40 & 48mm
WEIGHT (APPROX)	2.4kg
INERTIA (WK ²)	2.45X10 ⁻³ kg-m ²

MAX. MISALIGNMENT

AXIAL	±2.2mm
ANGULAR	0.90°
PARALLEL	0.25mm

SERIAL NO	DESCRIPTION	MATERIAL	QTY.
3	HUB-I	C.I GR FG 260	1
2	SPIDER	POLYURETHANE (BLUE)	1
1	HUB-I	C.I GR FG 260	1

TITLE: **RRJ-38 I/II / - - - -**
CPLG.
 MATERIAL: **REFER TABLE**
 CUSTOMER NAME: **REFER TABLE**

REV. DWGN NO. DESCRIPTION REV. BY APPD. BY DATE
 Lovejoy RATHI TRANSPOWER PVT LTD PUNE 411014
 DRG. No.: **3 EN-F-112**