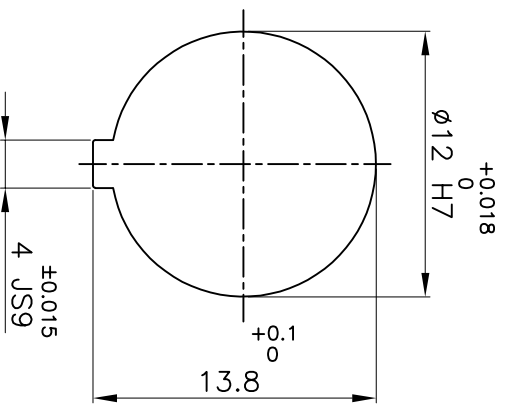
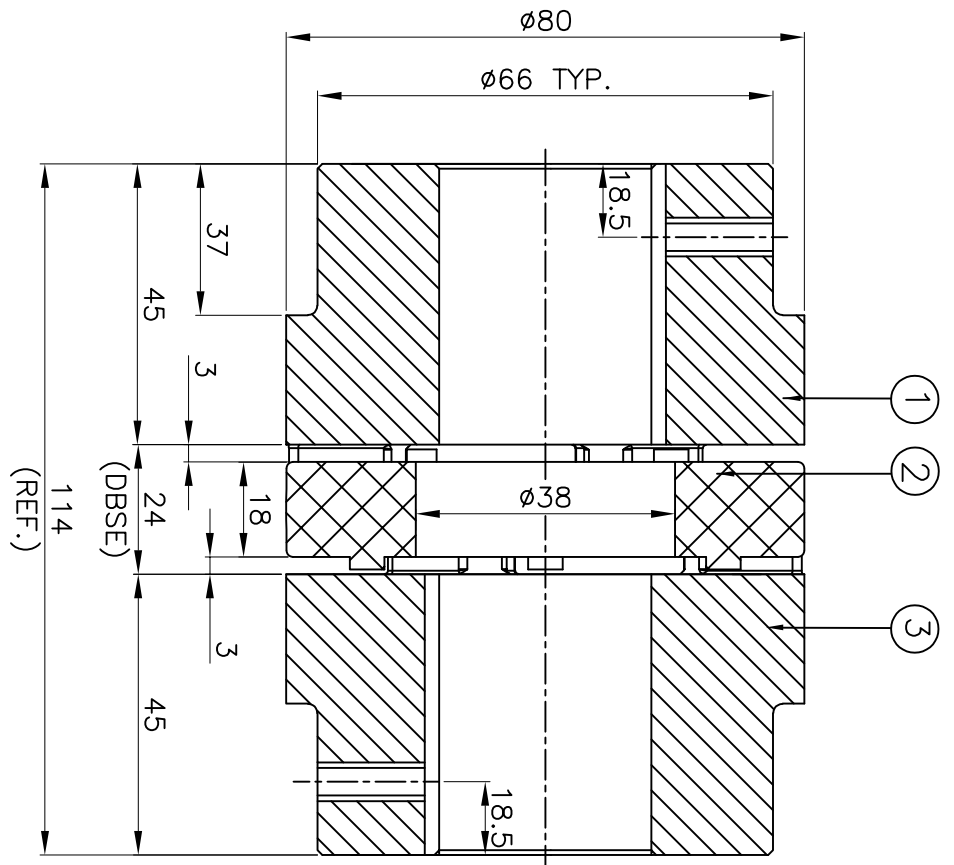


DRIVE SIDE



DRIVEN SIDE

APPLICATION DETAILS	
APPLICATION	-
RATED POWER	- KW
RATED SPEED	- RPM
RATED TORQUE	- kNm
A.S.F	-
COUPLING SPECIFICATIONS	
COUPLING RATING	3.47 kW @ 100 RPM
RATED TORQUE	332 Nm
MAX BORE TYPE-1	40 mm
WEIGHT (APPROX)	2.0 kg
INERTIA WK ² (APPROX)	1.85x10 ⁻⁵ kg-m ²
CPLG COMPONENTS DYNAMICALLY BALANCED TO GR.6.3 AS PER ISO 21940-II.	
MAXIMUM MISALIGNMENTS	
AXIAL DEFLECTION	±2.2 mm
ANGULAR DEFLECTION	0.90°
RADIAL DEFLECTION	0.25 mm

REV.	DMRN NO.	DESCRIPTION	REV. BY	APPD. BY	DATE

S.R. NO	DESCRIPTION	MATERIAL	QTY.
3	HUB-I	C.1 GR FG 260	1
2	SPIDER	POLYURETHANE (BLUE)	1
1	HUB-I	C.1 GR FG 260	1

TITLE: **RRJ-38 1/1 /-----**
 CPLG.
 CUSTOMER NAME: **RATHI TRANSPOWER PVT LTD**
 PUNE 411006
REFER TABLE
 MATERIAL: **C.1 GR FG 260**
 AUTHORITY INITIALS: **R/L-----**
 SIGN: **R/L-----**
 DATE: **3 EN-F-112**