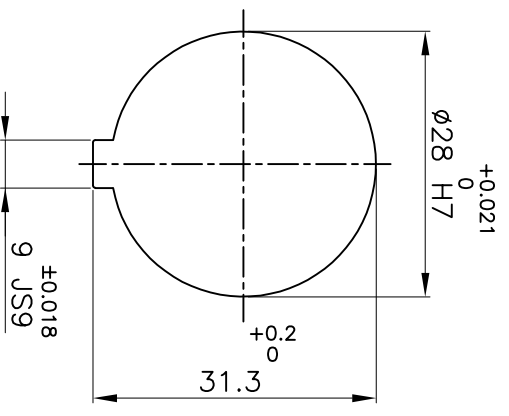
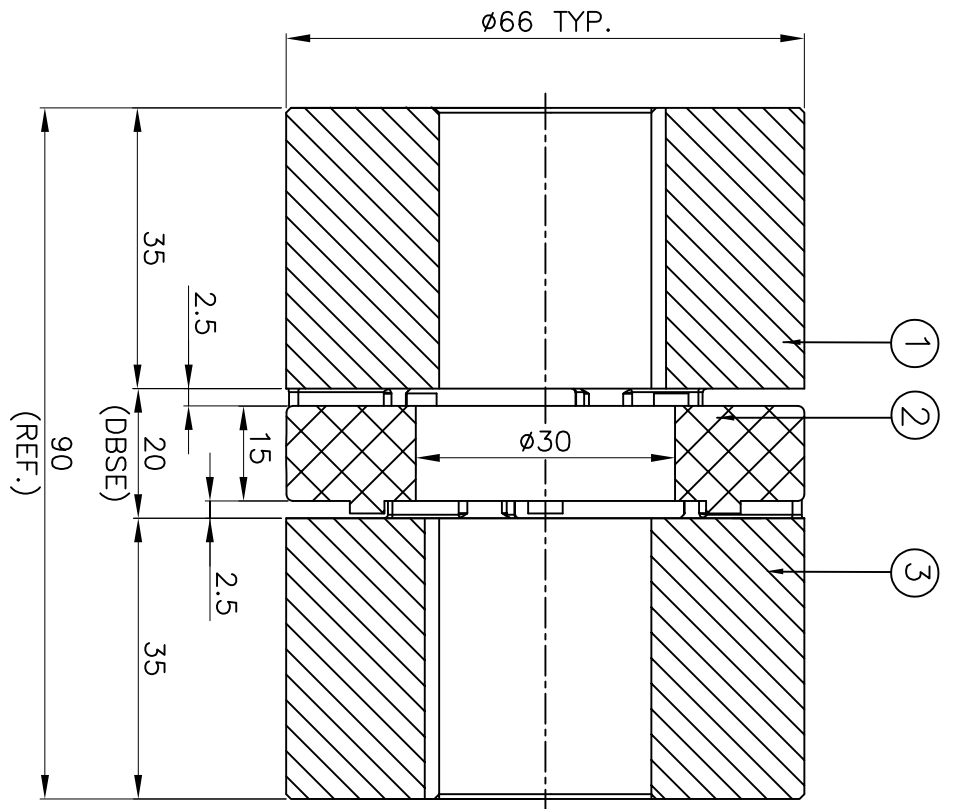


**DRIVE SIDE**



**DRIVEN SIDE**

APPLICATION DETAILS	
APPLICATION	-
RATED POWER	- KW
RATED SPEED	- RPM
RATED TORQUE	- kNm
A.S.F	-
COUPLING SPECIFICATIONS	
COUPLING RATING	2.07kW @ 100RPM
RATED TORQUE	198Nm
MAX BORE TYPE-II	38mm
WEIGHT (APPROX)	0.54kg
INERTIA WK <sup>2</sup> (APPROX)	42x10 <sup>-5</sup> kg-m <sup>2</sup>
CPLG COMPONENTS DYNAMICALLY BALANCED TO GR.6.3 AS PER ISO 21940-II.	
<b>MAXIMUM MISALIGNMENTS</b>	
AXIAL DEFLECTION	±2.0mm
ANGULAR DEFLECTION	0.80°
RADIAL DEFLECTION	0.20mm

REV.	DMRN NO.	DESCRIPTION	REV. BY	APPD. BY	DATE

SR NO	DESCRIPTION	MATERIAL	QTY.
3	HUB-II	LM24	1
2	SPIDER	POLYURETHANE (LIGHT LVORY)	1
1	HUB-II	LM24	1

TITLE: **RRJ-28 II/II /-----**

CUSTOMER NAME: **RATHI TRANSPOWER PVT LTD**

PUNE 411014

REFER TABLE

AUTHORITY INITIALS | SIGN | DATE

DRAWN | - | - | -

CHECKED | - | - | -

APPROVED | - | - | -

SCALE: NTS REF. No.: /

DRG. No.: /

This drawing / information / design is the property of Rathi Transpower Pvt. Ltd. It is confidential & must not be made public or copied without prior written authorization & is subjected to recall at any time. Acceptance of this drawing constitutes full agreement with these conditions