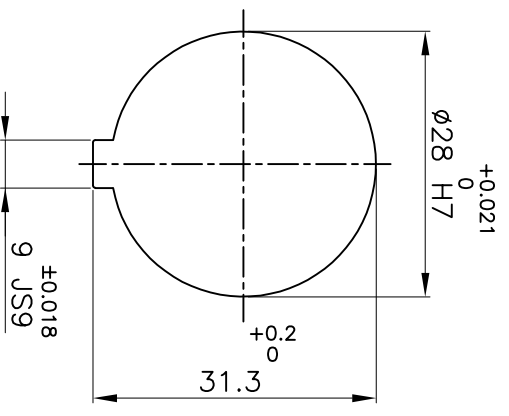
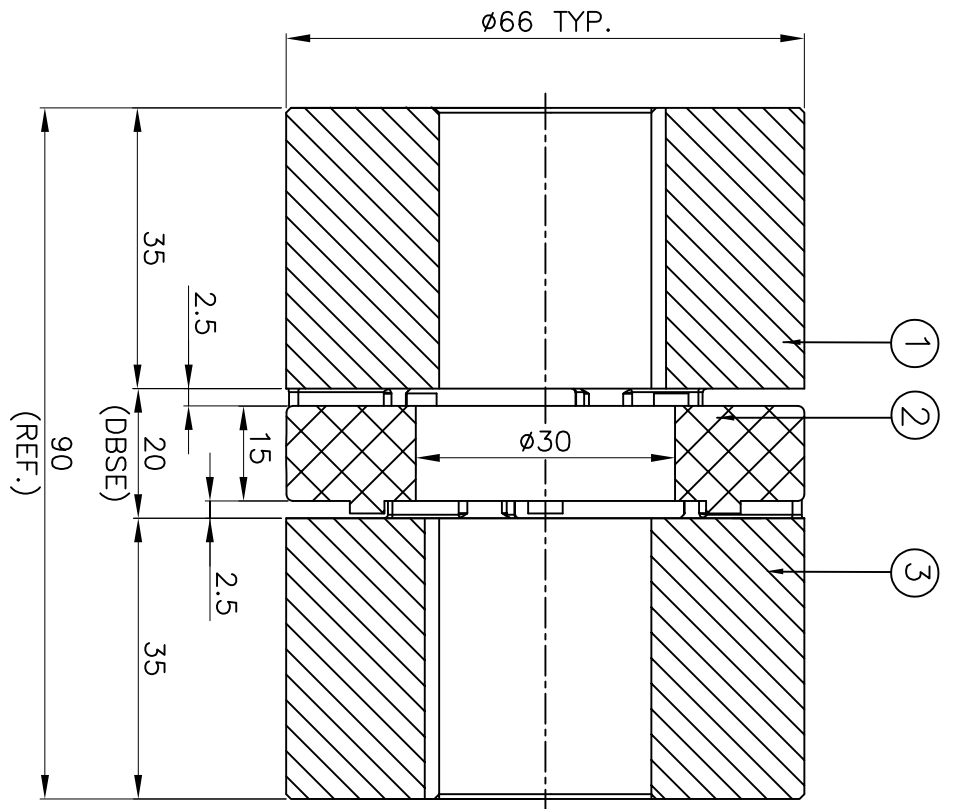


**DRIVE SIDE**



**DRIVEN SIDE**

**APPLICATION DETAILS**

APPLICATION	-
RATED POWER	- KW
RATED SPEED	- RPM
RATED TORQUE	- Nm
A.S.F.	-

**COUPLING CAPACITY**

COUPLING RATING	1.75KW AT 100RPM.
RATED TORQUE	167 Nm
MAX. BORE TYPE-II	38mm
WEIGHT (APPROX)	0.54kg
INERTIA (WK <sup>2</sup> )	42X10 <sup>-5</sup> kg-m <sup>2</sup>

**MAX. MISALIGNMENT**

AXIAL	±2.0mm
ANGULAR	0.80°
PARALLEL	0.20mm

SER NO	DESCRIPTION	MATERIAL	QTY.
3	HUB-II	LM24	1
2	SPIDER	POLYURETHANE (BLUE)	1
1	HUB-II	LM24	1

TITLE: **RRJ-28 II/II /-----**  
**CPLG.**  
 MATERIAL: **REFER TABLE**

CUSTOMER NAME:

Lovejoy  
**RATHI TRANSPOWER PVT LTD**  
 PUNE 411014  
 DRG. No.: -----/-----  
 3 EN-F-112

REV/	DMRN NO.	DESCRIPTION	REV. BY	APPD. BY	DATE