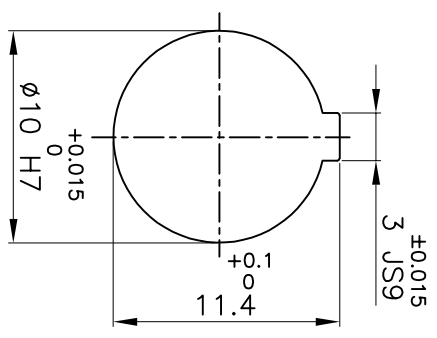
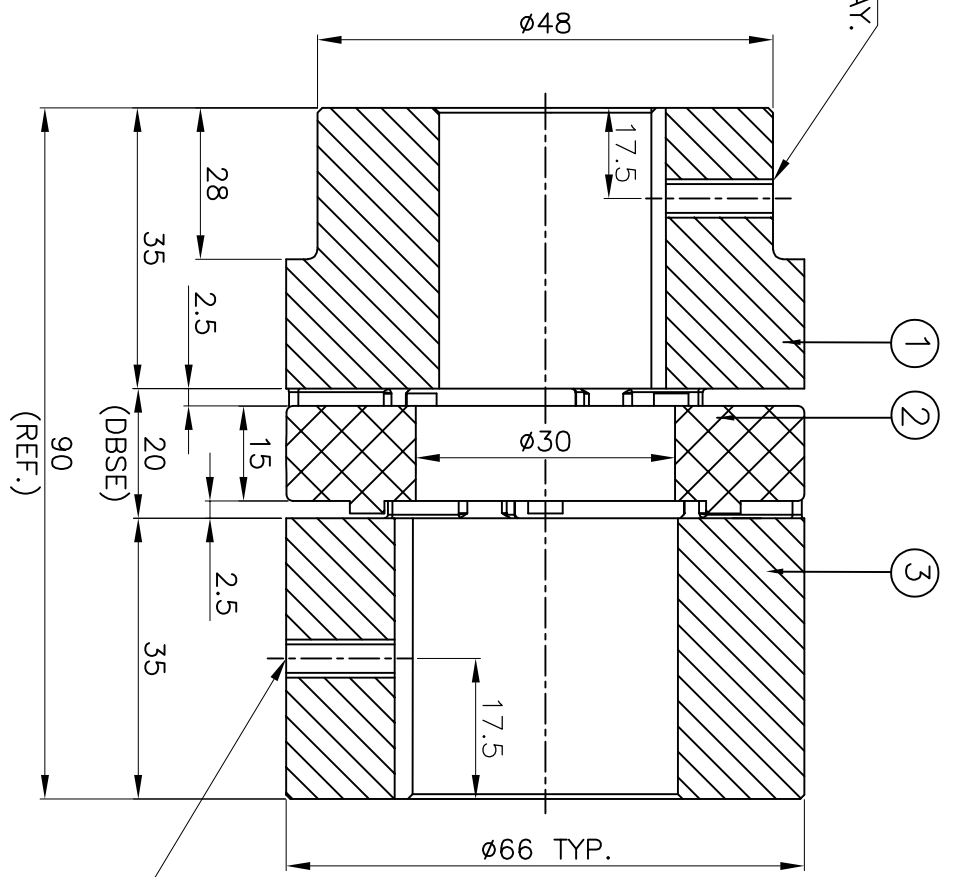


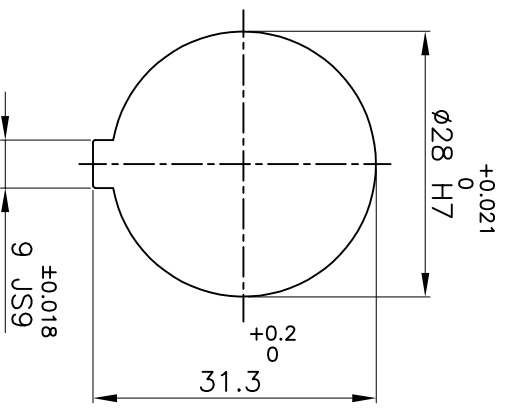
M5X0.8P TAPPED HOLE
FOR SET SCREW ON KEYWAY.



DRIVE SIDE



M6X1P TAPPED HOLE
FOR SET SCREW ON KEYWAY.



DRIVEN SIDE

APPLICATION DETAILS

APPLICATION	-
RATED POWER	- KW
RATED SPEED	- RPM
RATED TORQUE	- Nm
A.S.F.	-

COUPLING CAPACITY

COUPLING RATING	0.95KW AT 100RPM.
RATED TORQUE	91 Nm
MAX. BORE TYPE-I & II	28 & 38mm.
WEIGHT (APPROX)	0.54kg
INERTIA (WK ²)	42X10 ⁻⁵ kg-m ²

MAX. MISALIGNMENT

AXIAL	±2.0mm
ANGULAR	0.80°
PARALLEL	0.20mm

SR NO	DESCRIPTION	MATERIAL	QTY.
3	HUB-II	LM24	1
2	SPIDER	POLYURETHANE (GRAY)	1
1	HUB-I	LM24	1

TITLE: **RRJ-28 I/II / - - - -**
CPLG.
 MATERIAL: **REFER TABLE**
 CUSTOMER NAME: **-**
 AUTHORITY INITIALS: **-** SIGN: **-** DATE: **-**
 DRAWN: **-** CHECKED: **-** APPROVED: **-**
 SCALE: NTS/REF: No.: **-**

REV. DMRN NO. DESCRIPTION REV. BY APPD. BY DATE
 RATHI TRANSPOWER PVT LTD
 PUNE 411014
 DRG. No.: **- - - - -**
 3 EN-F-112