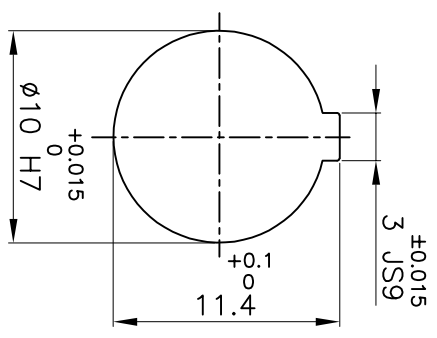
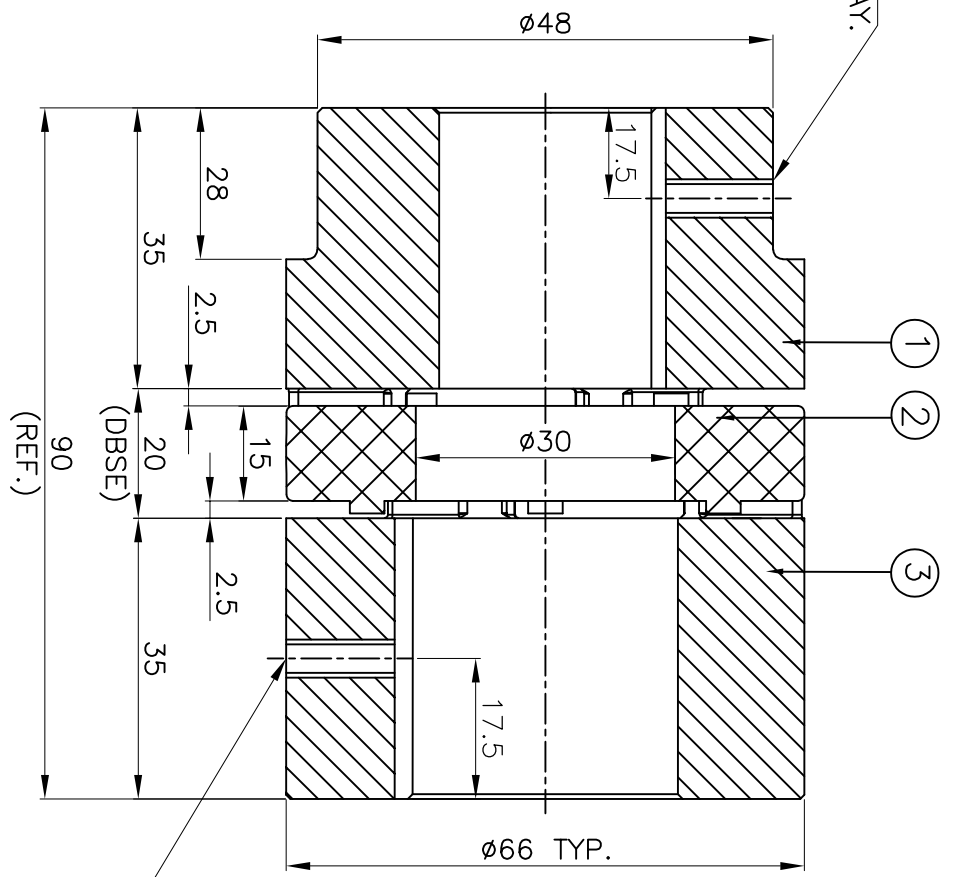


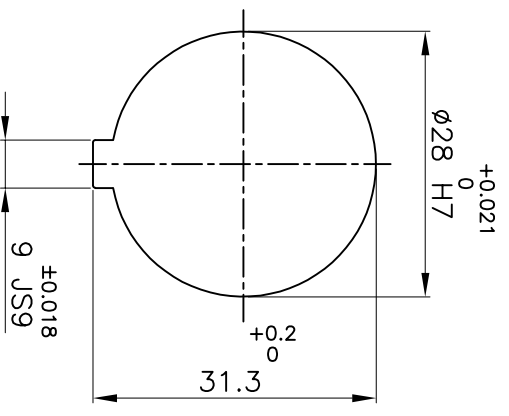
M5X0.8P TAPPED HOLE
FOR SET SCREW ON KEYWAY.



DRIVE SIDE



DRIVEN SIDE



M6X1P TAPPED HOLE
FOR SET SCREW ON KEYWAY.

APPLICATION DETAILS

APPLICATION	-
RATED POWER	- KW
RATED SPEED	- RPM
RATED TORQUE	- kWh
A.S.F	-
COUPLING SPECIFICATIONS	
COUPLING RATING	1.75kW @ 100 RPM
COUPLING TORQUE	167 Nm
MAX BORE TYPE-III	28mm & 36mm
WEIGHT (APPROX)	0.54 Kg
INERTIA WK ² (APPROX)	42x10 ⁻⁵ kg-m ²
CPLG COMPONENTS DYNAMICALLY BALANCED TO GR.6.3 AS PER ISO 21940-II.	
MAXIMUM MISALIGNMENTS	
AXIAL DEFLECTION	±2.0 mm
ANGULAR DEFLECTION	0.80°
RADIAL DEFLECTION	0.20 mm

SERIAL NO	DESCRIPTION	MATERIAL	QTY.
3	HUB-II	LM24	1
2	SPIDER	POLYURETHANE (BLUE)	1
1	HUB-I	LM24	1

TITLE: **RRJ-28 I/II / - - - -**
 CUSTOMER NAME: **CPLG.**
 MATERIAL: **REFER TABLE**

AUTHORITY	INITIALS	SIGN	DATE
DRAWN	-	-	-
CHECKED	-	-	-
APPROVED	-	-	-

SCALE: NTS REF. No.:
 DRG. No.:
RATHI TRANSPOWER PVT LTD
 PUNE 411014

This drawing / information / design is the property of Rathi Transpower Pvt. Ltd. It is confidential & must not be made public or copied without prior written authorization & is subjected to recall at any time. Acceptance of this drawing constitutes full agreement with these conditions