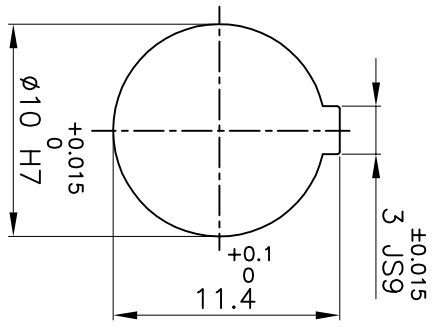


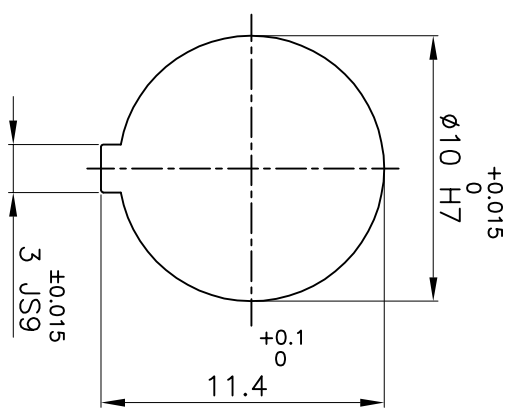
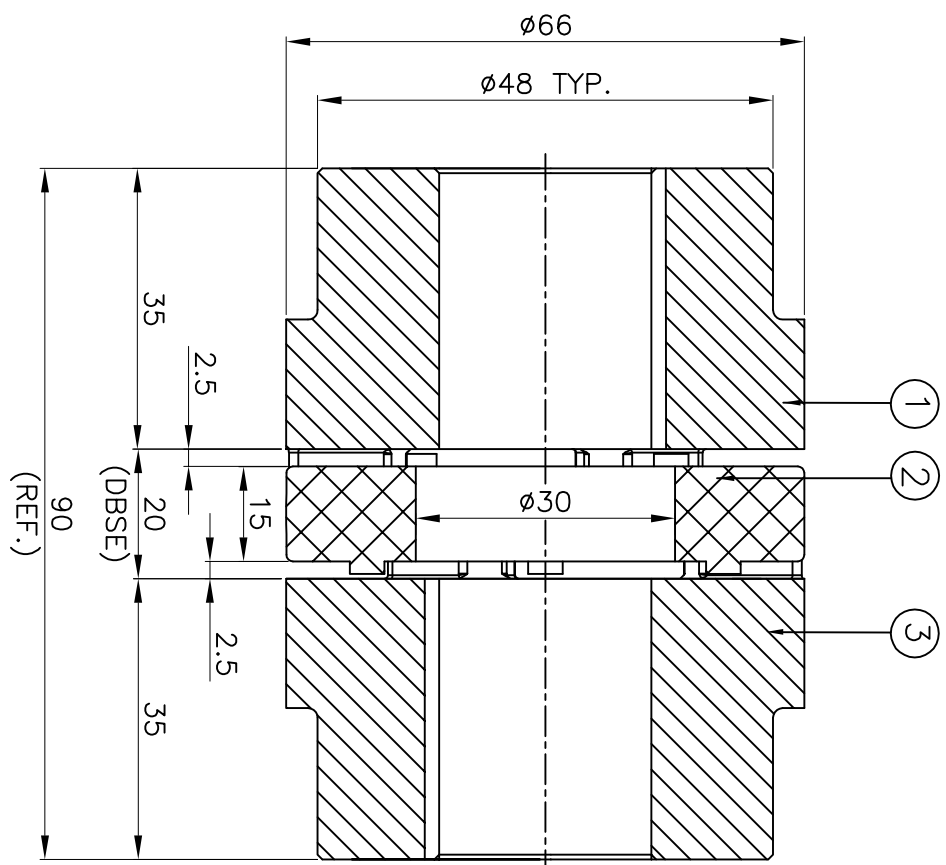
IF IN DOUBT, PLEASE ASK

DO NOT SCALE ALL DIMENSIONS ARE IN mm

J I H G F E D C B A



DRIVE SIDE



DRIVEN SIDE

**APPLICATION DETAILS**

APPLICATION	-
RATED POWER	- KW
RATED SPEED	- RPM.
RATED TORQUE	- Nm
A.S.F.	-

**COUPLING CAPACITY**

COUPLING RATING	1.75KW AT 100RPM.
RATED TORQUE	167Nm
MAX. BORE TYPE-I	10mm
WEIGHT (APPROX)	0.39kg
INERTIA (WK <sup>2</sup> )	20X10 <sup>-5</sup> kg-m <sup>2</sup>

**MAX. MISALIGNMENT**

AXIAL	±2.0mm
ANGULAR	0.80°
PARALLEL	0.20mm

S/N	SR NO	DESCRIPTION	MATERIAL	QTY.
3	HUB-I	ALUMINIUM		1
2	SPIDER	POLYURETHANE (BLUE)		1
1	HUB-I	ALUMINIUM		1

TITLE: **RRJ-28 I/1 /-----**  
 CPLG.  
 MATERIAL: **REFER TABLE**  
 CUSTOMER NAME: \_\_\_\_\_  
 AUTHORITY INITIALS: \_\_\_\_\_ SIGN: \_\_\_\_\_ DATE: \_\_\_\_\_  
 DRAWN: \_\_\_\_\_ CHECKED: \_\_\_\_\_ APPROVED: \_\_\_\_\_  
 SCALE: N/S/REF. No.: \_\_\_\_\_

REV.	DNRM NO.	DESCRIPTION	REV. BY	APPD. BY	DATE

Lovejoy  
 RATHI TRANSPOWER PVT LTD  
 PUNE 411014  
 DRG No.: **R/L-----/-**  
 3 EN-F-112

This drawing / information / design is the property of Rathi Transpower Pvt. Ltd. It is confidential & must not be made public or copied without prior written authorization & is subjected to recall at any time. Acceptance of this drawing constitutes full agreement with these conditions