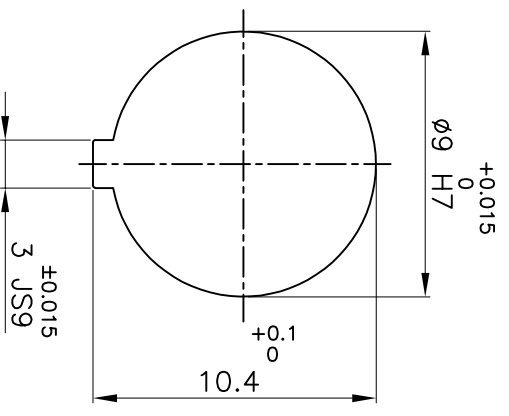
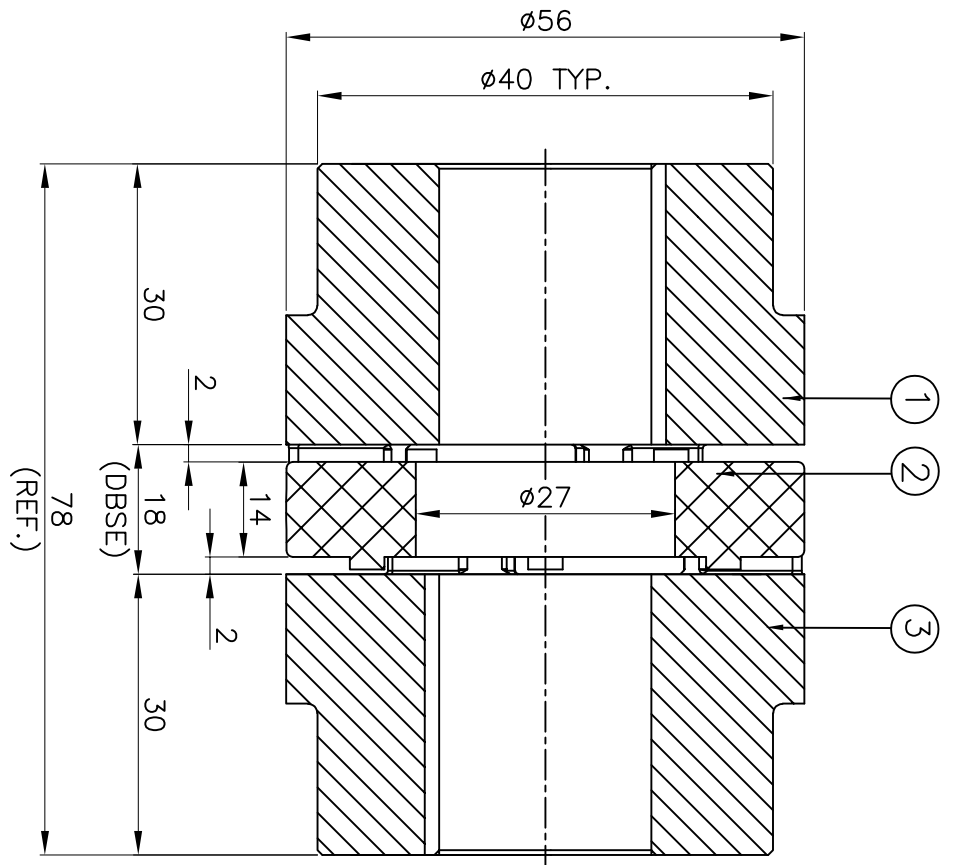


DRIVE SIDE



DRIVEN SIDE

APPLICATION DETAILS	
APPLICATION	-
RATED POWER	- KW
RATED SPEED	- RPM
RATED TORQUE	- kNm
A.S.F	-
COUPLING SPECIFICATIONS	
COUPLING RATING	0.35 kW @ 100 RPM
RATED TORQUE	33 Nm
MAX BORE TYP-1	9 mm
WEIGHT (APPROX)	0.24 Kg
INERTIA WK ² (APPROX)	9x10 ⁻⁵ kg-m ²
CPLG COMPONENTS DYNAMICALLY BALANCED TO GR.6.3 AS PER ISO 21940-II.	
MAXIMUM MISALIGNMENTS	
AXIAL DEFLECTION	±1.8 mm
ANGULAR DEFLECTION	0.80°
RADIAL DEFLECTION	0.2 mm

REV.	DMRN NO.	DESCRIPTION	REV. BY	APPD. BY	DATE

SR NO	DESCRIPTION	MATERIAL	QTY.
3	HUB-1	ALUMINIUM	1
2	SPIDER	POLYURETHANE (GRAY)	1
1	HUB-1	ALUMINIUM	1

TITLE: **RRJ-24 1/1 /-----**

CUSTOMER NAME: **RATHI TRANSPOWER PVT LTD**

PUNE 411014

REF. TABLE

AUTHORITY	INITIALS	SIGN	DATE
DRAWN	-	-	-
CHECKED	-	-	-
APPROVED	-	-	-

SCALE: NTS REF. No.: -

DRG. No.: **R/L-----/-**