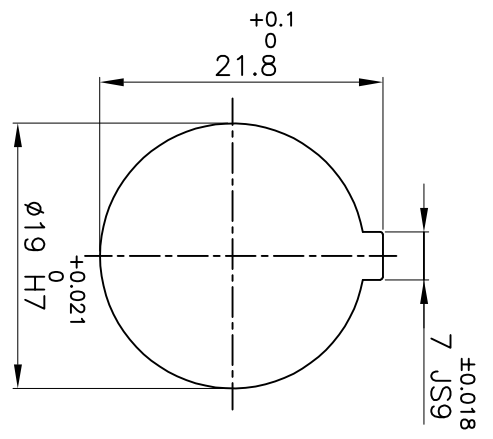
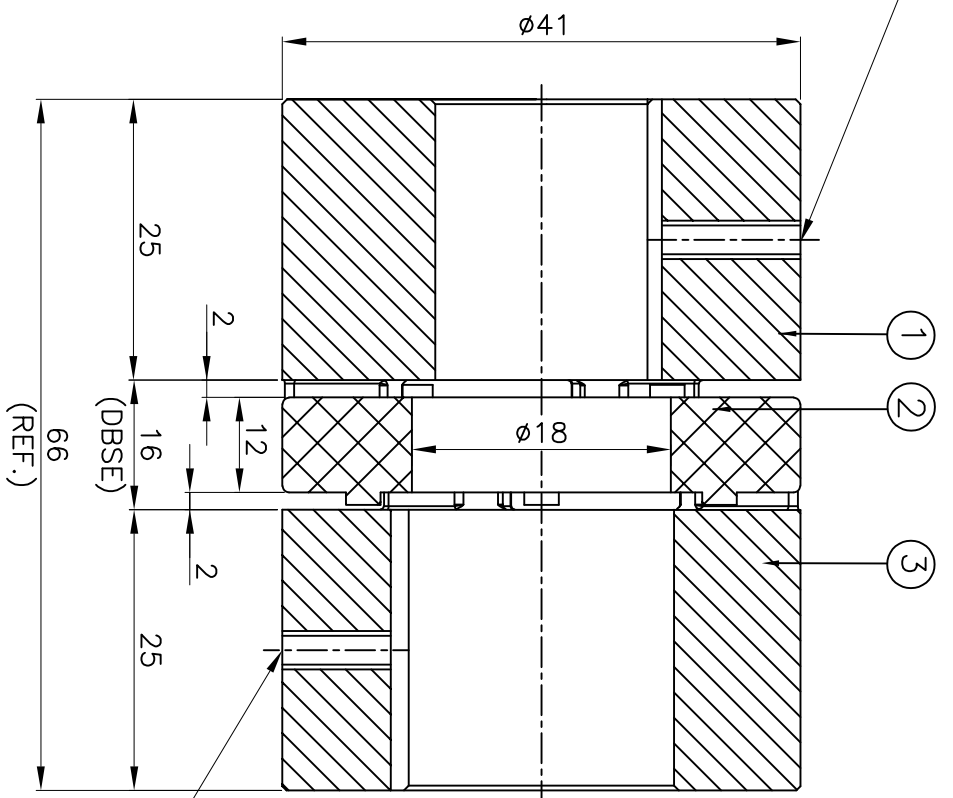


M5X0.8P TAPPED HOLE  
FOR SET SCREW ON KEYWAY.

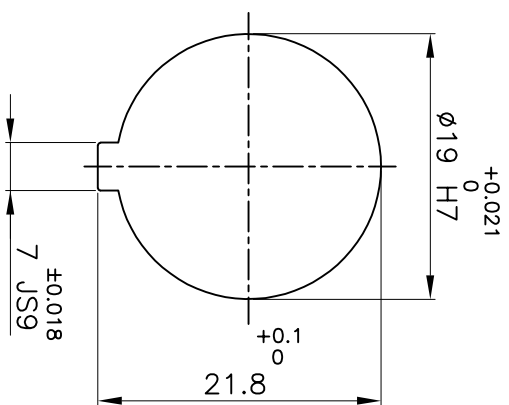


DRIVE SIDE



(DBSE)

(REF.)



DRIVEN SIDE

M5X0.8P TAPPED HOLE  
FOR SET SCREW ON KEYWAY.

**APPLICATION DETAILS**

APPLICATION	-
RATED POWER	- KW
RATED SPEED	- RPM
RATED TORQUE	- kNm

**COUPLING SPECIFICATIONS**

COUPLING RATING	0.10 kW @ 100 RPM
MAX BORE TYPE-II	24mm
WEIGHT (APPROX)	0.14 Kg
INERTIA WK² (APPROX)	4.3x10 <sup>-5</sup> kg-m²

CPLG COMPONENTS DYNAMICALLY  
BALANCED TO GR.6.3 AS PER ISO 21940-II.  
**MAXIMUM MISALIGNMENTS**

AXIAL DEFLECTION	±1.6 mm
ANGULAR DEFLECTION	0.80°
RADIAL DEFLECTION	0.15 mm

SER NO	DESCRIPTION	MATERIAL	QTY.
3	HUB-II	LM24	1
2	SPIDER	POLYURETHANE (GRAY)	1
1	HUB-II	LM24	1

TITLE: **RRJ-19 II/II /-----**  
CPLG.  
REFER TABLE

CUSTOMER NAME: -

AUTHORITY INITIALS	SIGN	DATE
DRAWN	-	-
CHECKED	-	-
APPROVED	-	-
SCALE: NTS/REF: No.:	-	-

REV/ DWGN NO.	DESCRIPTION	REV. BY	APPD. BY	DATE



RATHI TRANSPOWER PVT LTD  
PUNE 411014

DRG. No.: **R/L-----**  
3 EN-F-112