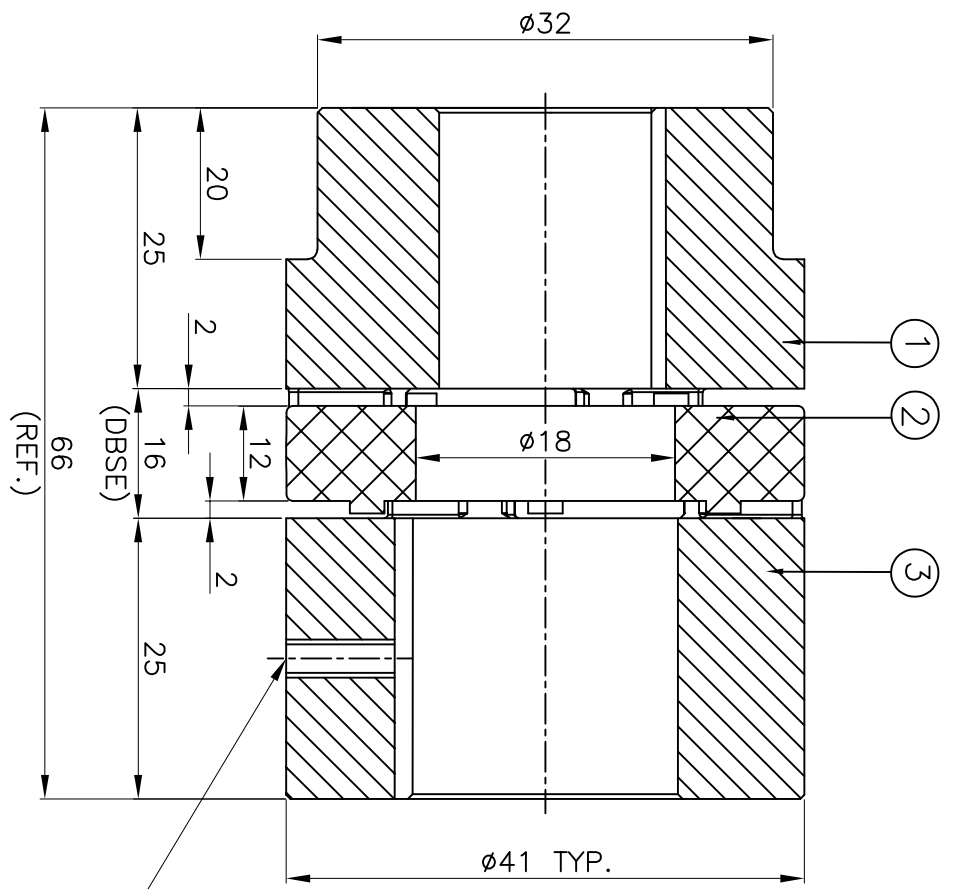
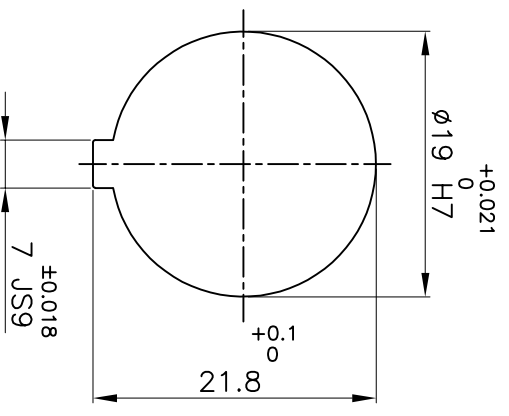


DRIVE SIDE



DRIVEN SIDE



M5X0.8P TAPPED HOLE FOR SET SCREW ON KEYWAY.

APPLICATION DETAILS

APPLICATION	-
RATED POWER	- KW
RATED SPEED	- RPM
RATED TORQUE	- kNm
A.S.F	-

COUPLING SPECIFICATIONS

COUPLING RATING	0.18 kW @ 100 RPM
RATED TORQUE	18 Nm
MAX BORE TYPE-III	19mm & 24mm
WEIGHT (APPROX)	0.14 Kg
INERTIA WK^2 (APPROX)	4.3×10^{-5} kg-m ²
CPLG COMPONENTS DYNAMICALLY BALANCED TO GR.6.3 AS PER ISO 21940-II.	
MAXIMUM MISALIGNMENTS	
AXIAL DEFLECTION	± 1.6 mm
ANGULAR DEFLECTION	0.80°
RADIAL DEFLECTION	0.15 mm

SR NO	DESCRIPTION	MATERIAL	QTY.
3	HUB-II	LM24	1
2	SPIDER	POLYURETHANE (BLUE)	1
1	HUB-I	LM24	1

TITLE: **RRJ-19 I/II / - - - -**
 CUSTOMER NAME: **CPLG.**
 MATERIAL: **REFER TABLE**

Lovejoy
RATHI TRANSPOWER PVT LTD
 PUNE 411014
 DRG. No.: **-----/---**

REV	DMRN NO.	DESCRIPTION	REV. BY	APPD. BY	DATE