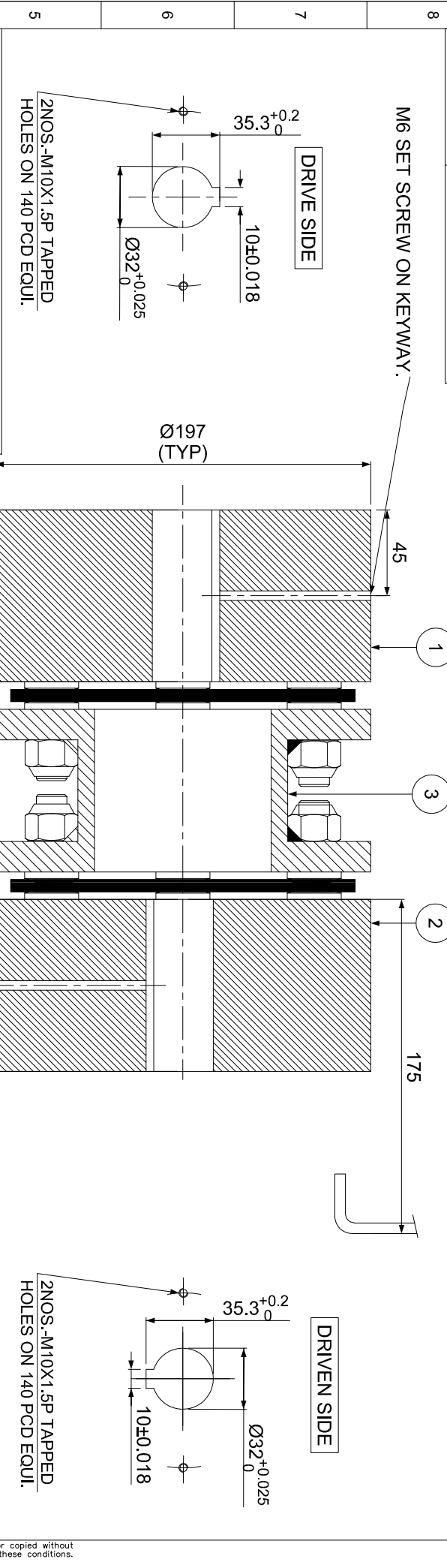
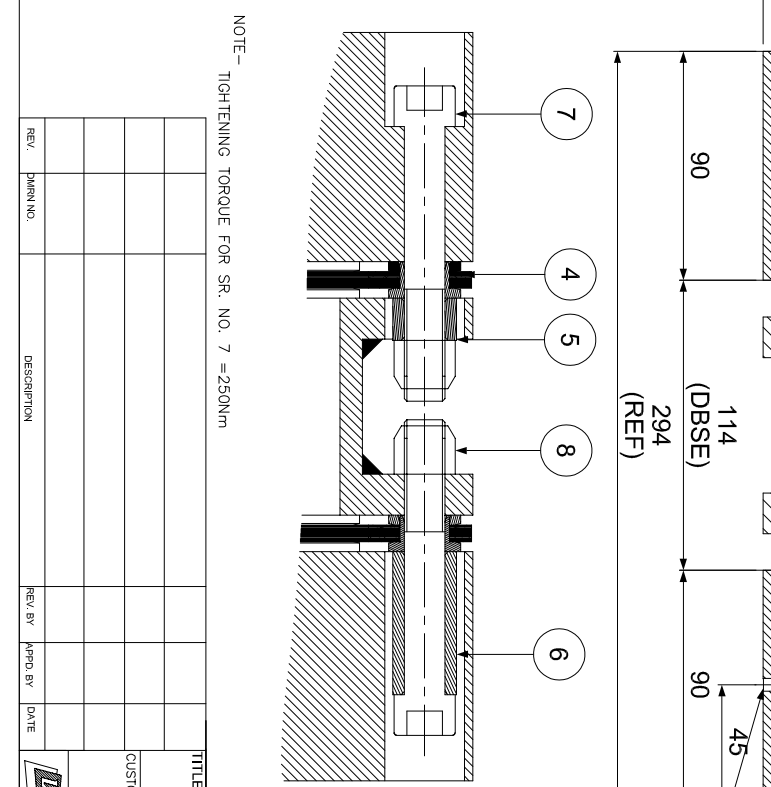


ERP CODE: _____



NO.	DESCRIPTION	UNIT	VALUE
1	APPLICATION	-	-
2	RATED POWER	-	-
3	RATED SPEED	-	-
4	RATED TORQUE	-	-
5	A.S.F.	-	-
6	COUPLING SPECIFICATIONS	-	-
7	COUPLING RATING	58.5 KW @ 100 RPM	
8	RATED TORQUE	5586 Nm	
9	PEAK TORQUE	11166 Nm	
10	SHORT CIRCUIT TORQUE	19540 Nm	
11	MAX. BORE	115 mm	
12	WEIGHT (Approx.)	49kg	
13	INERTIA (WK ²)	0.244 kg.M ²	
14	CPLG DYNAMIC BALANCED TO GR 6.3 AS PER ISO 21940-11		
15	MAX. MISALIGNMENT		
16	AXIAL DEFLECTION	± 2 mm	
17	ANGULAR DEFLECTION	0.75° PER STACK	
18	RADIAL MISALIGNMENT	0.013 mm	



SR.NO.	DESCRIPTION	MATERIAL	QTY.
1	DRIVE HUB (II)	ASTM A 1040	1
2	DRIVEN HUB (II)	ASTM A 1040	1
3	SPACER	ASTM A1068, ASTM A361 ASTM A1040	1
4	ELEMENT BLADE ASSEMBLY	ANSI SS 301	2
5	SLEEVE (I)	ASTM A 1040	6
6	SLEEVE (II)	ASTM A 1040	6
7	COUPLING BOLT (II)	AH GR. 12.9	12
8	CLEVIS LOCK NUT	GR. 10	12

NOTE - TIGHTENING TORQUE FOR SR. NO. 7 = 250Nm

TITLE: RLM-520(14)II/II
 MATERIAL: RLM-520(14)II/II
 REFERENCE TABLE: COUPLING

CUSTOMER NAME: _____

APPROVED: _____

SCALE: NTS REF. No.: _____

DRG. No.: L/RLM-XXXX/0

3 EN-F-112-Rev1