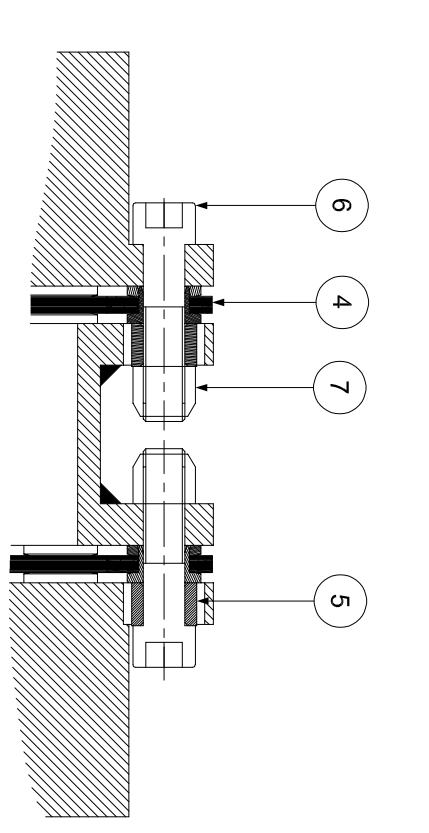


APPLICATION DETAILS	
APPLICATION	-
RATED POWER	-
RATED SPEED	-
RATED TORQUE	-
A.S.F.	-
COUPLING SPECIFICATIONS	
COUPLING RATING	58.5 KW @ 100 RPM
RATED TORQUE	5586 Nm
PEAK TORQUE	11166 Nm
SHORT CIRCUIT TORQUE	19540 Nm
MAX. BORE	90 mm
WEIGHT (Approx.)	32 kg
INERTIA (WK ²)	0.127 kg.M ²
CPLG DYNAMIC BALANCED TO GR 6.3 AS PER ISO 21940-11	
MAX. MISALIGNMENT	
AXIAL DEFLECTION	±2 mm
ANGULAR DEFLECTION	0.75° PER STACK
RADIAL MISALIGNMENT	0.013 mm



NOTE- TIGHTENING TORQUE FOR SR. NO. 6 = 250Nm

SR.NO.	DESCRIPTION	MATERIAL	QTY.
1	DRIVE HUB (I)	ASTM A 1040	1
2	DRIVEN HUB (I)	ASTM A 1040	1
3	SPACER	ASTM A36, ASTM A106B, ASTM A1040	1
4	ELEMENT BLADE ASSEMBLY	AISI SS 301	2
5	SLEEVE (I)	ASTM A 1040	12
6	COUPLING BOLT(I)	AH BOLT GR. 12.9	12
7	CLEV LOCK NUT	GR.10	12

ERP CODE:	J	I	H	G	F	E	D	C	B	A
DRIVE SIDE	M6 SET SCREW ON KEYWAY.									
DRIVEN SIDE	M6 SET SCREW ON KEYWAY.									
TITLE: RLM-520(114) I/I /----- CUSTMER NAME: CPLG RATHI TRANSPower PVT LTD PUNE-411014 SCALE: NTS REF. NO.										
MATERIAL: REFER TABLE AUTHORITY INITIALS SIGN DATE DRAWN - - - - - CHECKED - - - - - APPROVED - - - - - DRG.NO.: L/RLM-XXXX/0										
REV. DMRN NO. DESCRIPTION REV. BY/APPD. BY DATE										