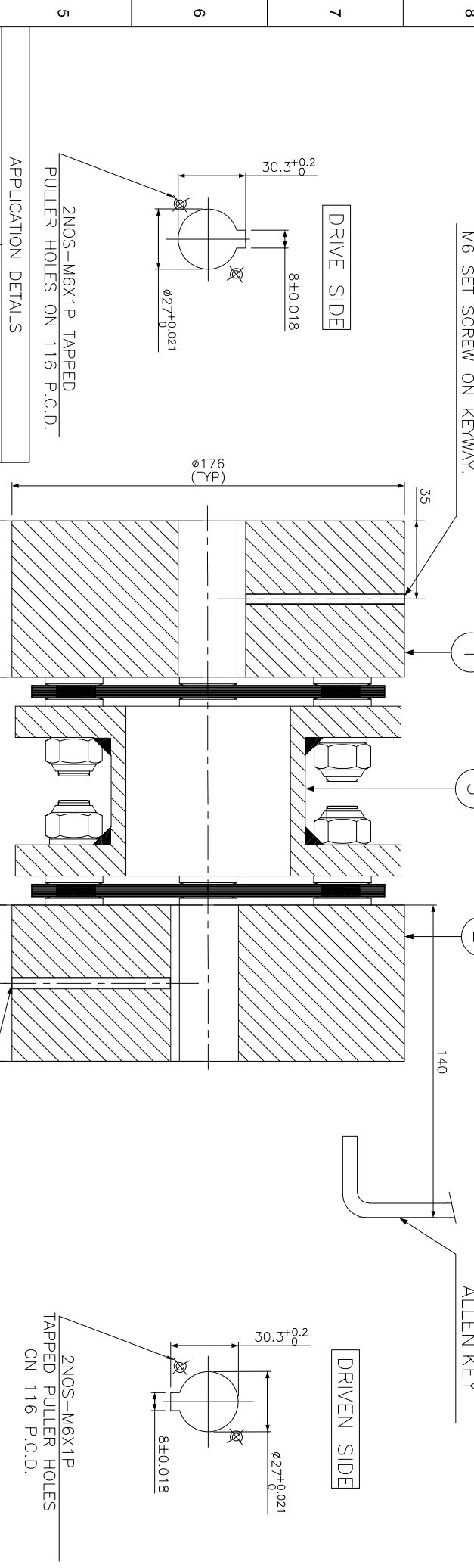
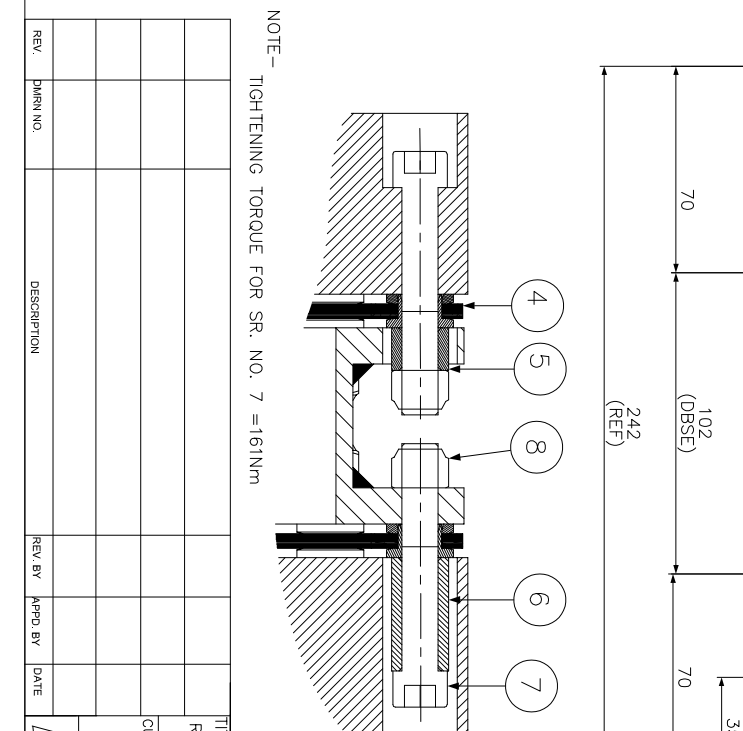


J	I	H	G	F	E	D	C	B	A
ERP CODE:	M6 SET SCREW ON KEYWAY.								



5	APPLICATION	-
4	RATED POWER	-
4	RATED SPEED	-
4	RATED TORQUE	-
4	A.S.F.	-
3	COUPLING RATING	36.3 KW @ 100 RPM
3	RATED TORQUE	3466 Nm
3	PEAK TORQUE	6926 Nm
3	SHORT CIRCUIT TORQUE	12120 Nm
3	MAX. BORE	100 mm
2	WEIGHT (Approx.)	30.678 kg
2	INERTIA (WK ²)	0.121 kg.M ²
2	CPLG DYNAMIC BALANCED TO GR 6.3 AS PER ISO 21940-11	
2	MAX. MISALIGNMENT	
1	AXIAL DEFLECTION	±1 mm
1	ANGULAR DEFLECTION	0.75° PER STACK
1	RADIAL MISALIGNMENT	0.013mm



NOTE- TIGHTENING TORQUE FOR SR. NO. 7 =161Nm

SR.NO.	DESCRIPTION	MATERIAL	QTY.
8	CLEV LOCK NUT	GR. 10	12
7	COUPLING BOLT (II)	AH GR. 12.9	12
6	SLEEVE (II)	ASTM A 1040	6
5	SLEEVE (I)	ASTM A 1040	6
4	ELEMENT BLADE ASSEMBLY	ASI SS 301	2
3	SPACER	ASTM A106B,ASTM A36 \ ASTM A1040	1
2	DRIVEN HUB (II)	ASTM A 1040	1
1	DRIVE HUB (II)	ASTM A 1040	1

TITLE: RLM-400(102) II/II/-----
 COUPLING
 CUSTOMER NAME:
 MATERIAL: REFER TABLE
 AUTHORITY INITIALS: SIGN DATE
 DRAWN: -
 CHECKED: -
 APPROVED: -
 SCALE: NTS REF. No.:
 RATHI TRANSPOWER PVT LTD
 PUNE 411014
 Dwg. No.: L/RLM-XXXX/0
 3 EN-F-112-Rev1