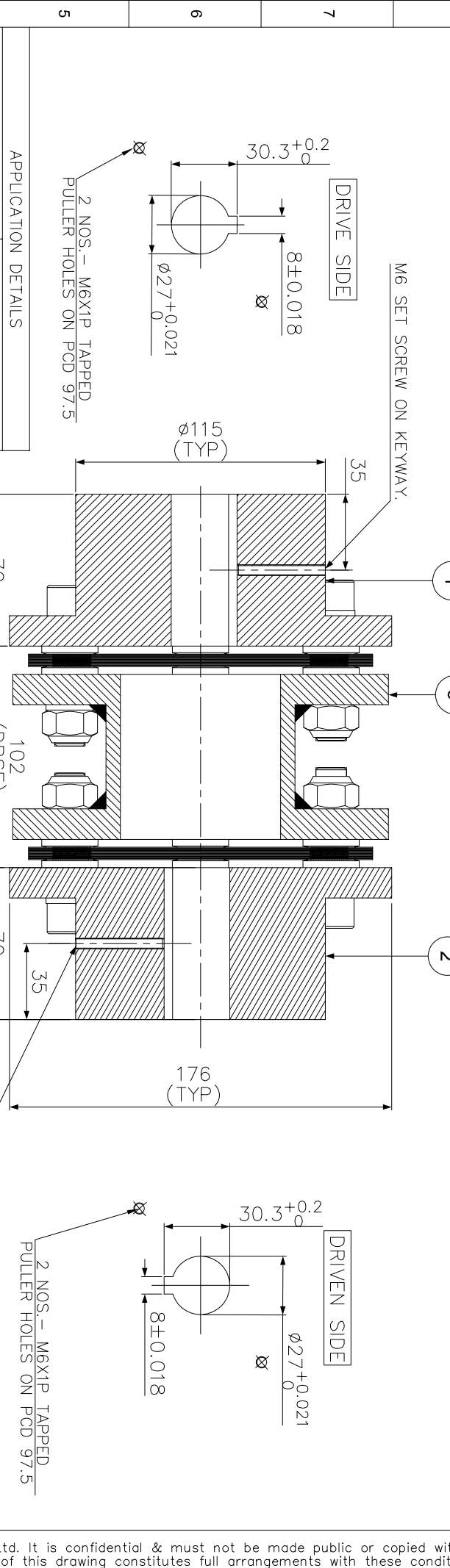
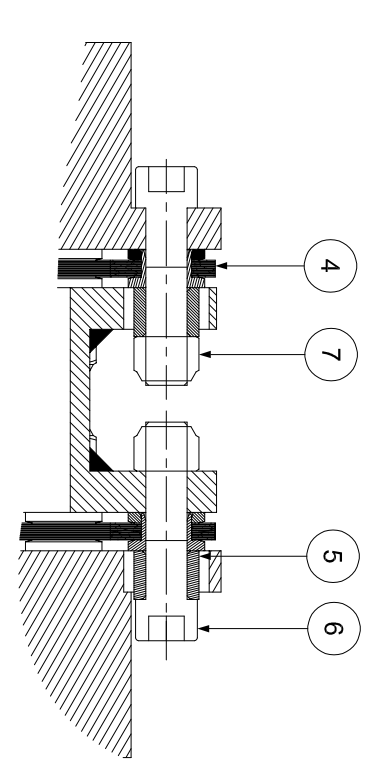


X	I	H	G	F	E	D	C	B	A
---	---	---	---	---	---	---	---	---	---

ERP CODE: _____



8	APPLICATION DETAILS	
7	RATED POWER	-
6	RATED SPEED	-
5	RATED TORQUE	-
4	A.S.F.	-
3	COUPLING SPECIFICATIONS	
2	COUPLING RATING	36.3 KW @ 100 RPM
1	RATED TORQUE	3466 Nm
	PEAK TORQUE	6926 Nm
	SHORT CIRCUIT TORQUE	12120 Nm
	MAX. BORE	80 mm
	WEIGHT (Approx.)	20.622 kg
	INERTIA (WK ²)	0.064 kg.M ²
	CPLG DYNAMIC BALANCED TO GR 6.3 AS PER ISO 21940-11	
	MAX. MISALIGNMENT	
	AXIAL DEFLECTION	±1 mm
	ANGULAR DEFLECTION	0.75° PER STACK
	RADIAL MISALIGNMENT	0.013 mm



NOTE - TIGHTENING TORQUE FOR SR. NO. 6 = 161Nm

SR.NO.	DESCRIPTION	MATERIAL	QTY.
1	DRIVE HUB (I)	ASTM A 1040	1
2	DRIVEN HUB (I)	ASTM A 1040	1
3	SPACER	ASTM A36, ASTM A106B, ASTM A1040	1
4	ELEMENT BLADE ASSEMBLY	ASTM A 1040	2
5	SLEEVE (I)	ASTM A 1040	12
6	COUPLING BOLT (I)	AH BOLT GR. 12.9	12
7	CLEVY LOCK NUT	GR.10	12

TITLE:	R/M-400(102) I/I
CUSTOMER NAME:	PLG
AUTHORITY:	---
DRAWN:	---
CHECKED:	---
APPROVED:	---
SCALE:	NTS
REF. NO.:	---

LogoJoy

RATHI TRANSPOWER PVT LTD
PUNE-411014

DRG. NO.: L/R/M-XXXX/0

3 EN-F-112-Rev1