

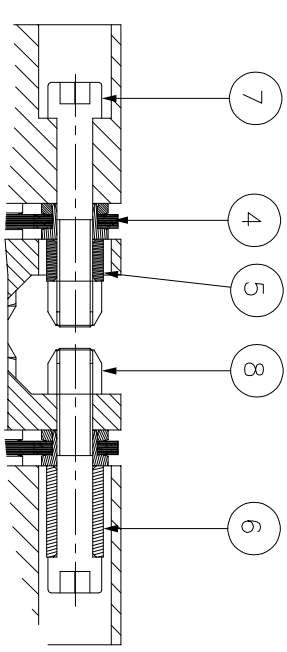
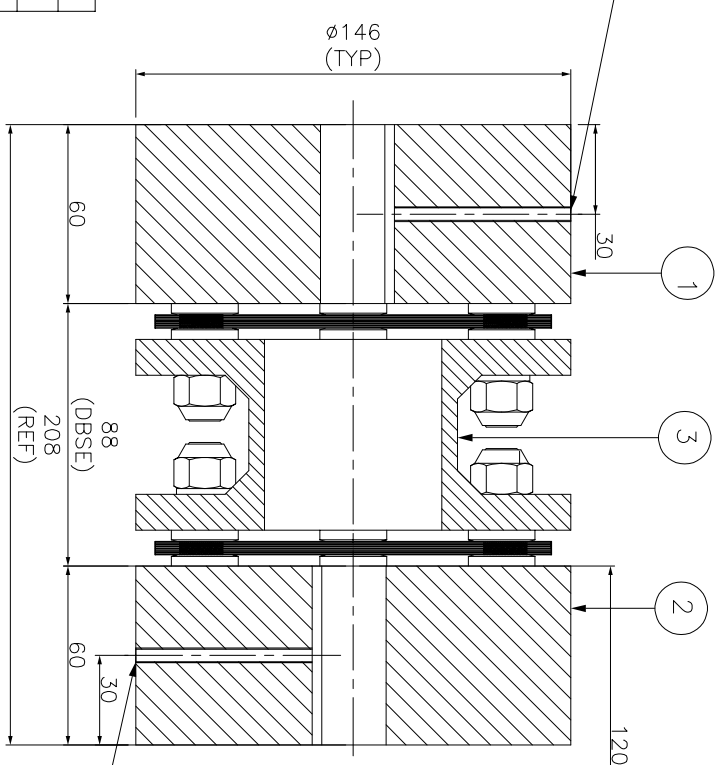
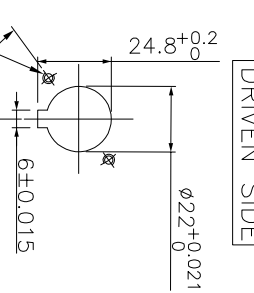
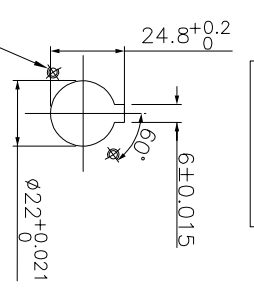
IF IN DOUBT, PLEASE ASK

DO NOT SCALE ALL DIMENSIONS ARE IN mm

J	I	H	G	F	E	D	C	B	A
---	---	---	---	---	---	---	---	---	---

ERP CODE: \_\_\_\_\_

M5 SET SCREW ON KEYWAY. ALLEN KEY



NOTE-  
TIGHTENING TORQUE FOR SR. NO. 7=102Nm

APPLICATION DETAILS	
APPLICATION	-
RATED POWER	-
RATED SPEED	-
RATED TORQUE	-
A.S.F.	-
COUPLING SPECIFICATIONS	
COUPLING RATING	20 KW @ 100 RPM
RATED TORQUE	1910 Nm
PEAK TORQUE	3824 Nm
SHORT CIRCUIT TORQUE	6692 Nm
MAX. BORE	80 mm
WEIGHT (Approx.)	18 Kg
INERTIA (WK <sup>2</sup> )	0.049 kg.M <sup>2</sup>
CPLG DYNAMIC BALANCED TO GR 6.3 AS PER ISO 21940-11	
MAX. MISALIGNMENT	
AXIAL DEFLECTION	± 1 mm
ANGULAR DEFLECTION	0.75° PER STACK
RADIAL MISALIGNMENT	0.013 mm

REV.	CHG. NO.	DESCRIPTION	REV. BY	APPR. BY	DATE

SR. NO.	DESCRIPTION	MATERIAL	QTY.
9	CLEV LOCK NUT	GR.10	12
7	COUPLING BOLT (I)	AH GR. 12.9	12
6	SLEEVE (II)	ASTM A 1040	6
5	SLEEVE (I)	ASTM A 1040	6
4	ELEMENT BLADE ASSEMBLY	AISI SS 301	2
3	SPACER	ASTM A106B,ASTM A36 \	1
2	DRIVEN HUB (II)	ASTM A 1040	1
1	DRIVE HUB (I)	ASTM A 1040	1

E/ 0/ 3 EN-F-112-Rev1

This drawing/information/design is the property of Rathi Transpower Pvt. Ltd. It is confidential & must not be made public or copied without prior written authorization & is subjected to recall at any time. Acceptance of this drawing constitutes full arrangements with these conditions.