

IF IN DOUBT, PLEASE ASK

DO NOT SCALE

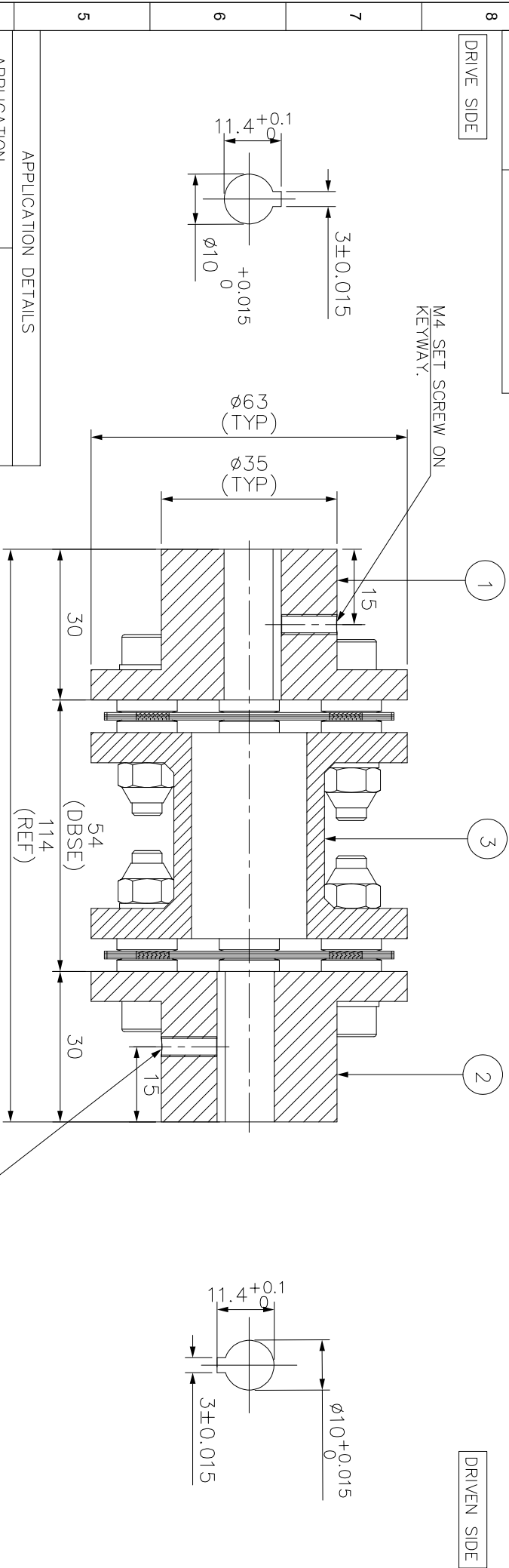
ALL DIMENSIONS ARE IN mm

J I H G F E D C B A

ERP CODE:

DRIVE SIDE

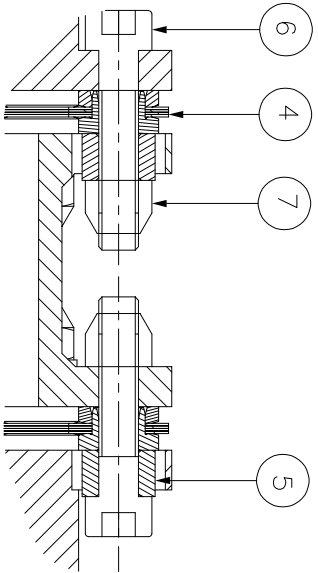
DRIVEN SIDE



M4 SET SCREW ON KEYWAY.

| APPLICATION DETAILS | |
|---|---------------------------|
| APPLICATION | - |
| RATED POWER | - |
| RATED SPEED | - |
| RATED TORQUE | - |
| A.S.F. | - |
| COUPLING SPECIFICATIONS | |
| COUPLING RATING | 1.0 KW @ 100 RPM |
| RATED TORQUE | 95 Nm |
| PEAK TORQUE | 192 Nm |
| SHORT CIRCUIT TORQUE | 336 Nm |
| MAX. BORE | 22 mm |
| WEIGHT (Approx.) | 1.095 kg |
| INERTIA (WK ²) | 0.00043 kg·M ² |
| CPLG DYNAMIC BALANCED TO GR 6.3 AS PER ISO 21940-11 | |
| MAX. MISALIGNMENT | |
| AXIAL DEFLECTION | ±1 mm |
| ANGULAR DEFLECTION | 0.75° PER STACK |
| RADIAL MISALIGNMENT | 0.013 mm |

NOTE - TIGHTENING TORQUE FOR SR. NO. 6=12.1Nm



| SR.NO. | DESCRIPTION | MATERIAL | QTY. |
|--------|------------------------|-----------------------|------|
| 1 | DRIVE HUB (I) | ASTM A 1040 | 1 |
| 2 | DRIVEN HUB (I) | ASTM A 1040 | 1 |
| 3 | SPACER | ASTM A1068/ASTM A36 \ | 1 |
| 4 | ELEMENT BLADE ASSEMBLY | ASTM A 301 | 2 |
| 5 | SLEEVE (I) | ASTM A 1040 | 12 |
| 6 | COUPLING BOLT (I) | AH BOLT GR. 12.9 | 12 |
| 7 | CLEV LOCK NUT | GR.10 | 12 |

| REV | DMRN NO. | DESCRIPTION | REV. BY | APPD. BY | DATE |
|-----|----------|-------------|---------|----------|------|
| | | | | | |
| | | | | | |
| | | | | | |

TITLE: RLM-10(54) I/1 /-----CPLG

CUSTOMER NAME: **Lovejoy**

SCALE: NTS

ANG. OF PROL.

DRG.NO.: L/RLM-XXXX/0

RATHI TRANSPOWER PVT LTD
PUNE-411014

3 EN-F-112-Rev1

This drawing/ information/ design is the property of Rathi Transpower Pvt. Ltd. It is confidential & must not be made public or copied without prior written authorization & is subjected to recall at any time. Acceptance of this drawing constitutes full arrangements with these conditions.