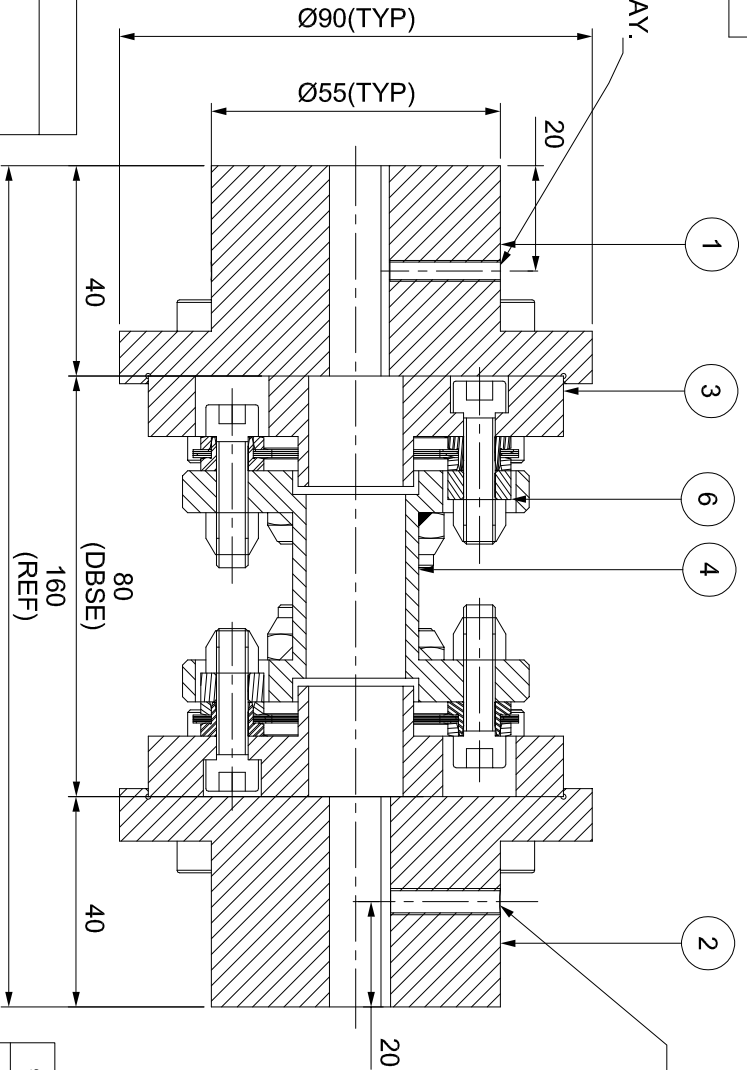
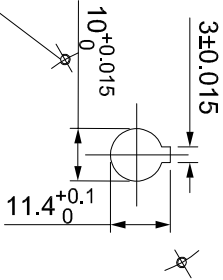


ERP CODE:

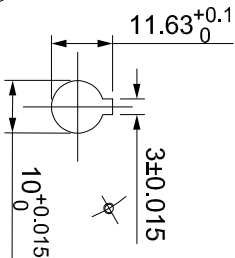
M4 SET SCREW ON KEYWAY.

DRIVE SIDE



M4 SET SCREW ON KEYWAY.

DRIVEN SIDE



APPLICATION DETAILS

APPLICATION	-
RATED POWER	-
RATED SPEED	-
RATED TORQUE	-
A.S.F.	-

COUPLING SPECIFICATIONS

COUPLING RATING	1.0 KW @ 100 RPM
RATED TORQUE	95 Nm
MAX. BORE	38 mm
WEIGHT (Approx.)	3.364 kg
INERTIA (WK ²)	0.002 kg.M ²

TORSIONAL STIFFNESS 0.018 MNm/rad

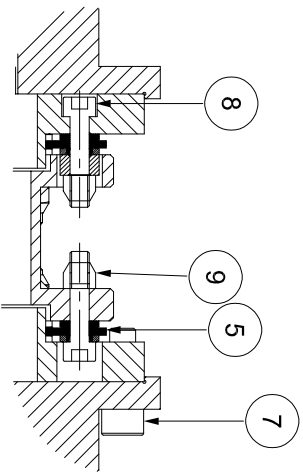
CPLG DYNAMIC BALANCED TO GR 6.3 AS PER ISO 21940-11

MAX. MISALIGNMENT

AXIAL DEFLECTION ± 1 mm

ANGULAR DEFLECTION 0.75°

RADIAL MISALIGNMENT 0.013 mm



TIGHTENING TORQUE :-

- 1) SR.NO.8 COUPLING BOLT = 12.1 Nm
- 2) SR.NO.7 ATTACHMENT BOLT = 12.1 Nm

SR.NO.	DESCRIPTION	MATERIAL	QTY.
9	CLEVELOCK NUT	GR.10	12
8	COUPLING BOLT	AH BOLT GR. 12.9	12
7	ATTACHMENT BOLT (III)	AH BOLT GR. 12.9	12
6	S SLEEVE	ASTM A 1040	6
5	ELEMENT BLADE ASSEMBLY	ALSI SS 301	2
4	SPACER	ASTM A1068,ASTM A361 ASTM A1040	1
3	ADAPTER III/IV	ASTM A 1040	2
2	DRIVEN HUB (III)	ASTM A 1040	1
1	DRIVE HUB (III)	ASTM A 1040	1

REM-8(80) III/III
/XXXX CPLG

CUSTOMER NAME:

SCALE: 1:1
DRAWN: -
CHECKED: -
APPROVED: -
REF. NO.: -



RATHI TRANSPower PVT LTD
PUNE-411014

DRG.NO.:
XXXX

E/ 0/

3 EN-F-12-Rev1