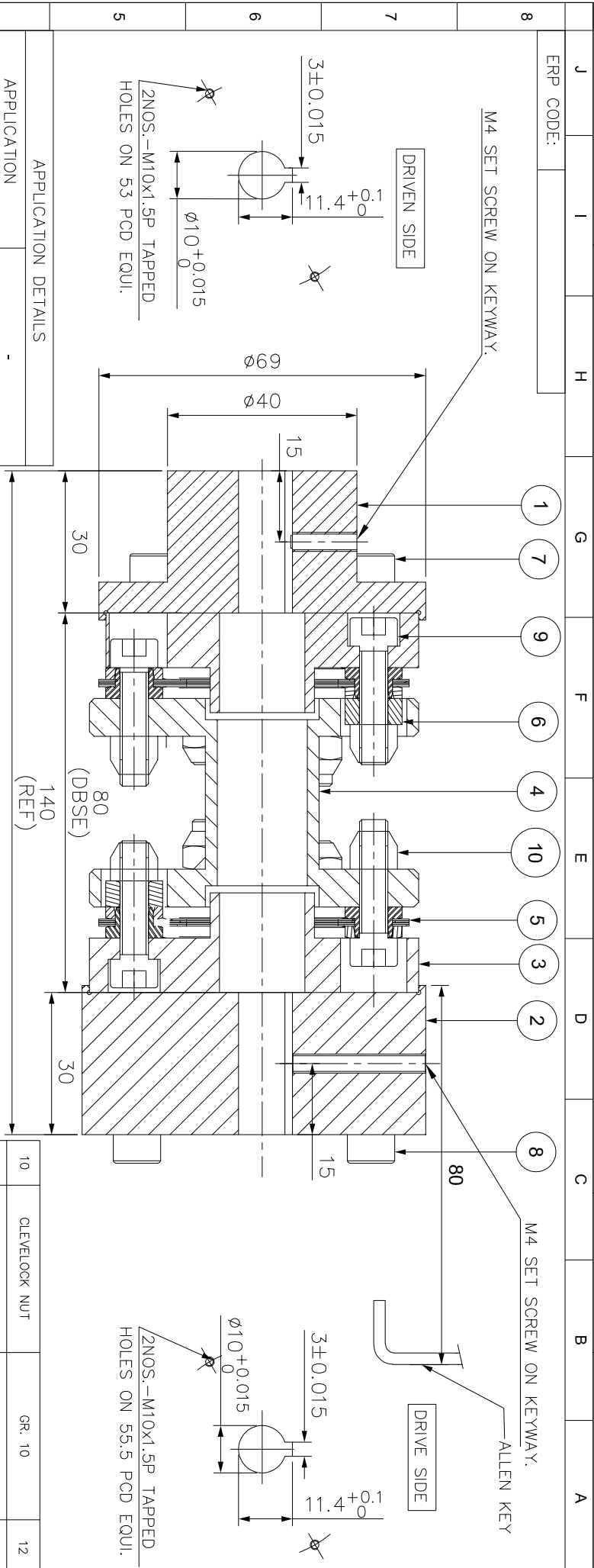


IF IN DOUBT, PLEASE ASK

DO NOT SCALE ALL DIMENSIONS ARE IN mm



APPLICATION DETAILS	
APPLICATION	-
RATED POWER	-
RATED SPEED	-
RATED TORQUE	-
A.S.F.	-
COUPLING SPECIFICATIONS	
COUPLING RATING	1.0 KW @ 100 RPM
RATED TORQUE	95 Nm
MAX. BORE	HUB(I) - 24mm HUB(II) - 42mm
WEIGHT (Approx.)	2.346 kg
INERTIA (WK ²)	0.001 kg.M ²
TORSIONAL STIFFNESS	0.018 MNm/rod
CPLG DYNAMIC BALANCING TO GR 6.3 AS PER ISO 21940-11	
MAX. MISALIGNMENT	
AXIAL DEFLECTION	±1 mm
ANGULAR DEFLECTION	0.75°
RADIAL MISALIGNMENT	0.013 mm

REV	DMRN NO.	DESCRIPTION	REV. BY	APPD. BY	DATE

NOTE:-
TIGHTENING TORQUE :-
 1) SR.NO.9 COUPLING BOLT = 12.1Nm
 2) SR.NO.7&8 ATTACHMENT BOLT = 12.1Nm

SR.NO.	DESCRIPTION	MATERIAL	QTY.
10	CLEVELOCK NUT	GR. 10	12
9	COUPLING BOLT	AH BOLT GR. 12.9	12
8	ATTACHMENT BOLT (II)	AH BOLT GR. 12.9	6
7	ATTACHMENT BOLT (I)	AH BOLT GR. 12.9	6
6	S SLEEVE	ASTM A 1040	6
5	ELEMENT BLADE ASSEMBLY	AISI SS 301	2
4	SPACER	ASTM A 1068, ASTM A36 ASTM A 1040	1
3	ADAPTER I/II	ASTM A 1040	2
2	DRIVE HUB (II)	ASTM A 1040	1
1	DRIVEN HUB (I)	ASTM A 1040	1

TITLE: REM-8(80)/II /XXXX CPLG
 CUSTOMER NAME: RATHI TRANSPOWER PVT LTD
 RATHI PUNE-411014
 REF. NO. /REM-XXXX/C
 SCALE: NTS
 AUTHORITY INITIALS SIGN DATE
 DRAWN -
 CHECKED -
 APPROVED -
 Mfg. of Prod. /