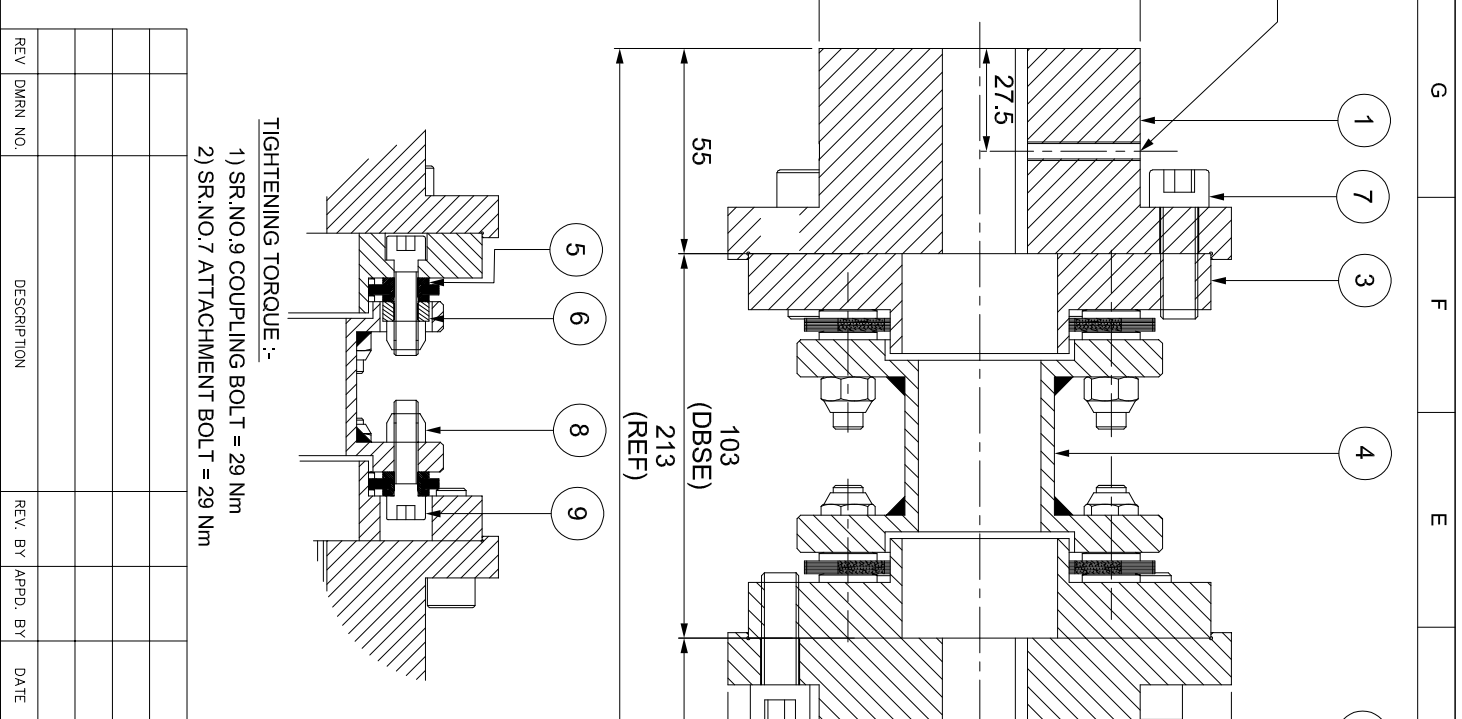


J	I	H	G	F	E	D	C	B	A
ERP CODE: _____									
<p>M5 SET SCREW ON KEYWAY.</p> <p>DRIVE SIDE</p>									
APPLICATION DETAILS									
APPLICATION - -									
RATED POWER - -									
RATED SPEED - -									
RATED TORQUE - -									
A.S.F. - -									
COUPLING SPECIFICATIONS									
COUPLING RATING 6.5 KW @ 100 RPM									
RATED TORQUE 621 Nm									
MAX. BORE 65 mm									
WEIGHT (Approx.) 10.456 kg									
INERTIA (WK ²) 0.018 kg·m ²									
TORSIONAL STIFFNESS 0.100 MNm/rad									
CPLG DYNAMIC BALANCED TO GR 6.3 AS PER ISO 21940-11									
MAX. MISALIGNMENT									
AXIAL DEFLECTION ± 1 mm									
ANGULAR DEFLECTION 0.75°									
RADIAL MISALIGNMENT 0.013mm									



REV		DMRN NO.	DESCRIPTION	REV. BY	APPD. BY	DATE
<p>TIGHTENING TORQUE :-</p> <p>1) SR.NO.9 COUPLING BOLT = 29 Nm</p> <p>2) SR.NO.7 ATTACHMENT BOLT = 29 Nm</p>						
SR.NO.	DESCRIPTION	MATERIAL	QTY.	SR.NO.	DESCRIPTION	MATERIAL
9	COUPLING BOLT	AH GR. 129	12	9	COUPLING BOLT	AH GR. 129
8	CLEVELOCK NUT	GR. 10	12	8	CLEVELOCK NUT	GR. 10
7	ATTACHMENT BOLT	AH GR. 129	12	7	ATTACHMENT BOLT	AH GR. 129
6	S SLEEVE	ASTM A 1040	6	6	S SLEEVE	ASTM A 1040
5	ELEMENT BLADE ASSEMBLY	ANSI SS 301	2	5	ELEMENT BLADE ASSEMBLY	ANSI SS 301
4	SPACER	ASTM A1068, ASTM A361, ASTM A1040	1	4	SPACER	ASTM A1068, ASTM A361, ASTM A1040
3	ADAPTER IIIIV	ASTM A 1040	2	3	ADAPTER IIIIV	ASTM A 1040
2	DRIVEN HUB (III)	ASTM A 1040	1	2	DRIVEN HUB (III)	ASTM A 1040
1	DRIVE HUB (III)	ASTM A 1040	1	1	DRIVE HUB (III)	ASTM A 1040

This drawing/ information/ design is the property of Rathi Transpower Pvt. Ltd. It is confidential & must not be made public or copied without prior written authorization & is subjected to recall at any time. Acceptance of this drawing constitutes full arrangements with these conditions.