

IF IN DOUBT, PLEASE ASK

DO NOT SCALE ALL DIMENSIONS ARE IN mm

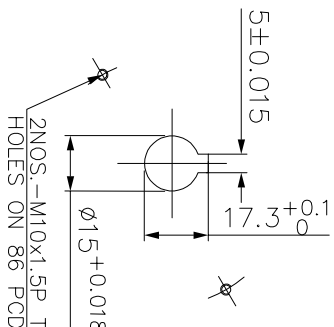
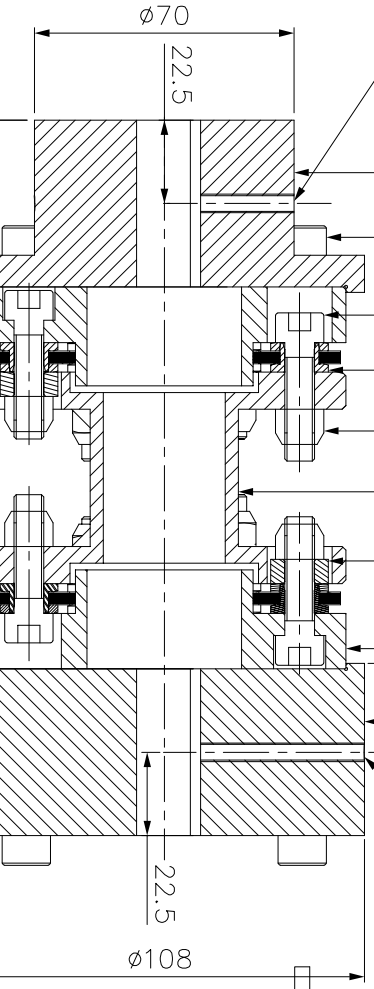
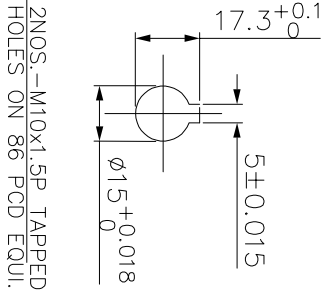
J I H G F E D C B A

ERP CODE:

M4 SET SCREW ON KEYWAY.
DRIVEN SIDE

M4 SET SCREW ON KEYWAY.
M4 SET SCREW ON KEYWAY.

DRIVE SIDE



2NOS. -M10x1.5P. TAPPED HOLES ON 86 PCD EQUI.

2NOS. -M10x1.5P. TAPPED HOLES ON 86 PCD EQUI.

APPLICATION DETAILS

APPLICATION	-
RATED POWER	-
RATED SPEED	-
RATED TORQUE	-
A.S.F.	-
COUPLING SPECIFICATIONS	-
COUPLING RATING	6.5 KW @ 100 RPM
RATED TORQUE	621 Nm
MAX. BORE	HUB (I) - 48mm HUB(II) - 72mm
WEIGHT (Approx.)	7.532 kg
INERTIA (WK ²)	0.010 kg.M ²
TORSIONAL STIFFNESS	0.100 MNm/rod
CPLG DYNAMIC BALANCING TO GR 6.3 AS PER ISO 1940-1	
MAX. MISALIGNMENT	
AXIAL DEFLECTION	±1 mm
ANGULAR DEFLECTION	0.75°
RADIAL MISALIGNMENT	0.013mm

NOTE:-
TIGHTENING TORQUE :-
1) SR.NO.9 COUPLING BOLT = 29Nm
2) SR.NO.7 ATTACHMENT BOLT = 29Nm

9	COUPLING BOLT	HTS GR. 12.9	12
8	CLEVELOCK NUT	GR. 8 MIN.	12
7	ATTACHMENT BOLT	HTS GR. 12.9	12
6	S SLEEVE	ASTM A 1040	6
5	ELEMENT BLADE ASSEMBLY	SS 301	2
4	SPACER	ASTM A 1040/ASTM A-106B, ASTM A-36	1
3	ADAPTER I/II	ASTM A 1040	2
2	DRIVE HUB (II)	ASTM A 1040	1
1	DRIVEN HUB (I)	ASTM A 1040	1

TITLE:	REM-65(103) I/II
CUSTOMER NAME:	/XXXX CPLG.
MATERIAL:	REFER TABLE
AUTHORITY INITIALS:	
DRAWN:	-
CHECKED:	-
APPROVED:	-
SCALE:	NTS
REF. NO.:	

RATHI TRANSPOWER PVT LTD
PUNE-411014

REV. DMRN NO.	DESCRIPTION	REV. BY	APPD. BY	DATE

E/ 0/ 3 EN-F-112-Rev1