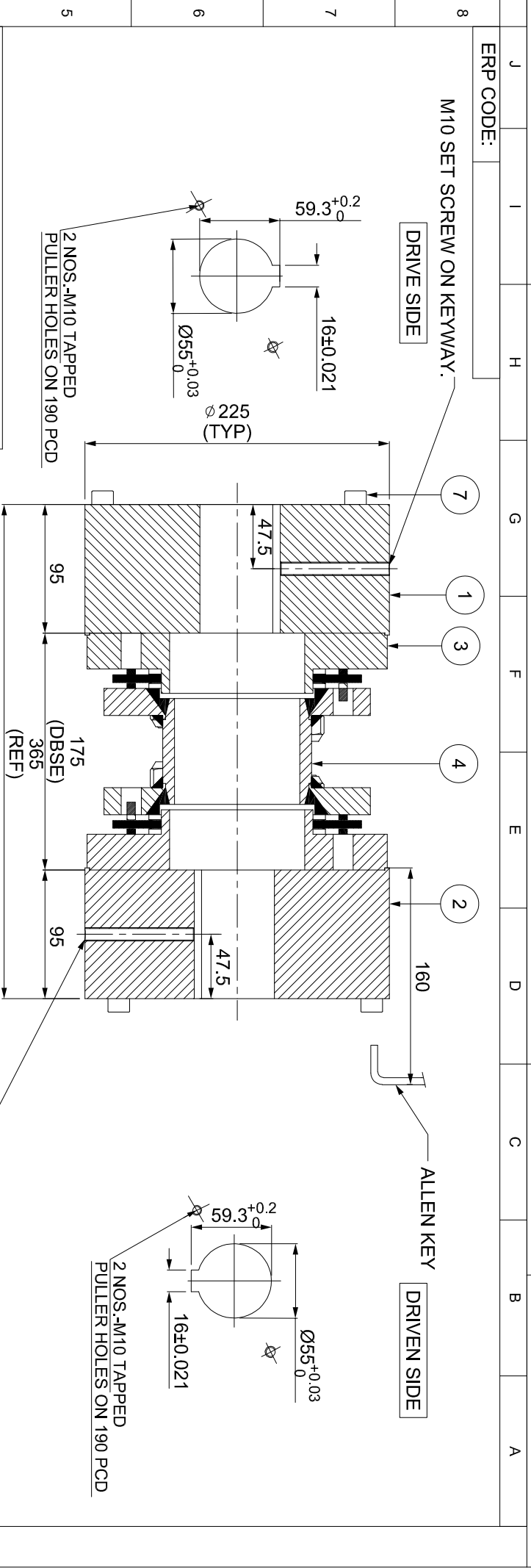


IF IN DOUBT, PLEASE ASK

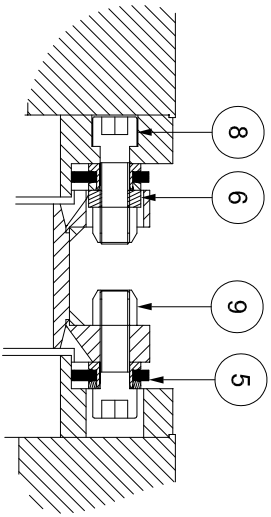
DO NOT SCALE

ALL DIMENSIONS ARE IN mm



M10 SET SCREW ON KEYWAY.

APPLICATION DETAILS	
APPLICATION	-
RATED POWER	-
RATED SPEED	-
RATED TORQUE	-
A.S.F.	-
COUPLING SPECIFICATIONS	
COUPLING RATING	58.5 KW @ 100 RPM
RATED TORQUE	5586 Nm
MAX. BORE	155 mm
WEIGHT (Approx.)	78.725 kg
INERTIA (WK ²)	0.524 kg·M ²
TORSIONAL STIFFNESS	1.239 MNm/rad
CPLG DYNAMIC BALANCED TO GR 6.3 AS PER ISO 21940-11	
MAX. MISALIGNMENT	
AXIAL DEFLECTION	± 2 mm
ANGULAR DEFLECTION	0.75°
RADIAL MISALIGNMENT	0.013 mm



NOTE:-

- TIGHTENING TORQUE:-
- 1) SR.NO.8 COUPLING BOLT = 250 Nm
- 2) SR.NO.7 ATTACHMENT BOLT = 59 Nm

REV. NO.	DESCRIPTION	REV. BY	APPD. BY	DATE

SR.NO.	DESCRIPTION	MATERIAL	QTY.
1	DRIVE HUB (IV)	ASTM A 1040	1
2	DRIVEN HUB (IV)	ASTM A 1040	1
3	ADAPTER III/IV	ASTM A 1040	2
4	SPACER	ASTM A106B, ASTM A36 I ASTM A1040	1
5	ELEMENT BLADE ASSEMBLY	ASTM A 301	2
6	SLEEVE	ASTM A 1040	6
7	ATTACHMENT_BOLT (IV)	AH BOLT GR. 12.9	12
8	COUPLING BOLT	AH BOLT GR. 12.9	12
9	CLEVELOCK NUT	GR. 10	12

TITLE:	REM-390(175)(IV/IV)
CUSTOMER NAME:	/XXXX CPLG
MATERIAL:	REFER TABLE
AUTHORITY:	INITIALS SIGN
DRAWN:	XXX
CHECKED:	XXX
APPROVED:	XXX
SCALE:	1:1
ANG. OF PROJ.:	
REF. NO.:	14.01.19

Logo: Lovat

RATHI TRANSPOWER PVT LTD
PUNE-411014

DRG.NO.: R/SD-XXXX/0

3 EN-F-112-Rev1

This drawing/information/design is the property of Rathi Transpower Pvt. Ltd. It is confidential & must not be made public or copied without prior written authorization & is subjected to recall at any time. Acceptance of this drawing constitutes full arrangements with these conditions.