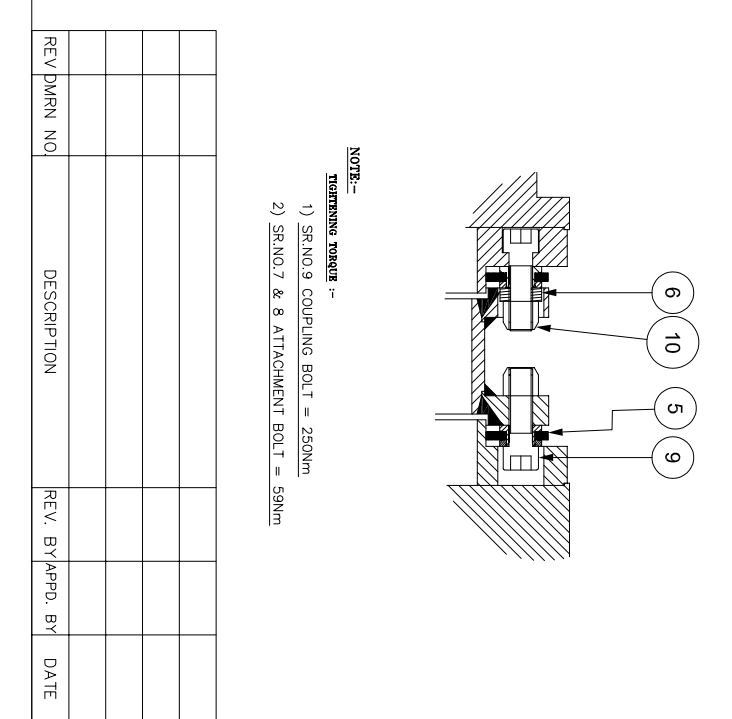


APPLICATION DETAILS	
APPLICATION	-
RATED POWER	-
RATED SPEED	-
RATED TORQUE	-
A.S.F.	-
COUPLING SPECIFICATIONS	
COUPLING RATING	58.5 kW @ 100 RPM
RATED TORQUE	5583 Nm
MAX. BORE	HUB(III)-127mm HUB(IV)-155mm
WEIGHT (Approx.)	69.720 kg
INERTIA (WK ²)	0.437 kg.M ²
TORSIONAL STIFFNESS	1.239 MNm/rad
CPLG DYNAMIC BALANCED TO GR 6.3 AS PER ISO 1940-1	
MAX. MISALIGNMENT	
AXIAL DEFLECTION	± 2 mm
ANGULAR DEFLECTION	0.75°
RADIAL MISALIGNMENT	0.013 mm



SR.NO.	DESCRIPTION	MATERIAL	QTY.
10	CLEVELOCK NUT	GR. 8 MIN.	12
9	COUPLING BOLT	AH BOLT GR. 12.9	12
8	ATTACHMENT BOLT (IV)	AH BOLT GR. 12.9	6
7	ATTACHMENT BOLT (III)	AH BOLT GR. 12.9	6
6	SLEEVE	ASTM A 1040	6
5	ELEMENT BLADE ASSEMBLY	SS 301	2
4	SPACER	ASTM A1008, ASTM A36 \	1
3	ADAPTER III/IV	ASTM A 1040	2
2	DRIVE HUB (IV)	ASTM A 1040	1
1	DRIVEN HUB (III)	ASTM A 1040	1

SR.NO.	DESCRIPTION	MATERIAL	QTY.
1	DRIVEN HUB (III)	ASTM A 1040	1

NOTE:-
TIGHTENING TORQUE :-
 1) SR.NO.9 COUPLING BOLT = 250Nm
 2) SR.NO.7 & 8 ATTACHMENT BOLT = 58Nm

TITLE: REM-390(175)III/IV /V /XXXX CPLG

CUSTOMER NAME: RATHI TRANSPower PVT LTD PUNE-411014

REV. BY APPD. BY DATE

REV. DMRN NO. DESCRIPTION

SCALE: NTS

REF. NO.

PRG.NO.: L/REM-XXXX/0

This drawing/ information/ design is the property of Rathi Transpower Pvt. Ltd. It is confidential & must not be made public or copied without prior written authorization & is subjected to recall at any time. Acceptance of this drawing constitutes full arrangements with these conditions.