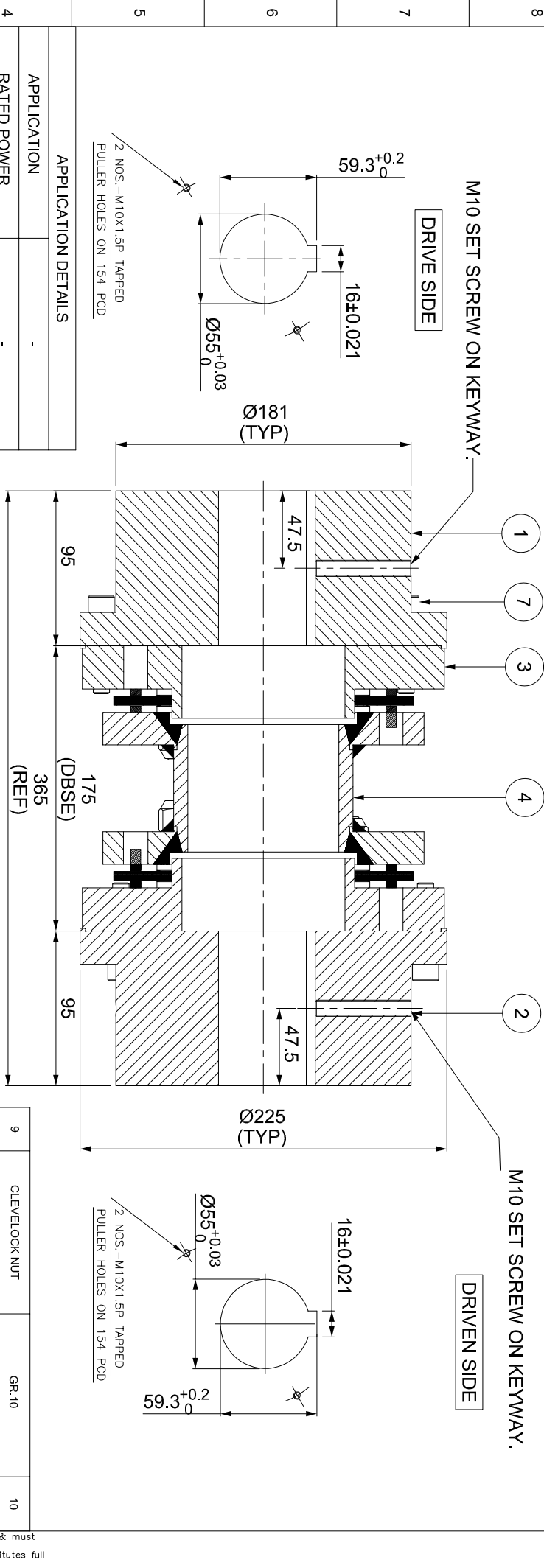


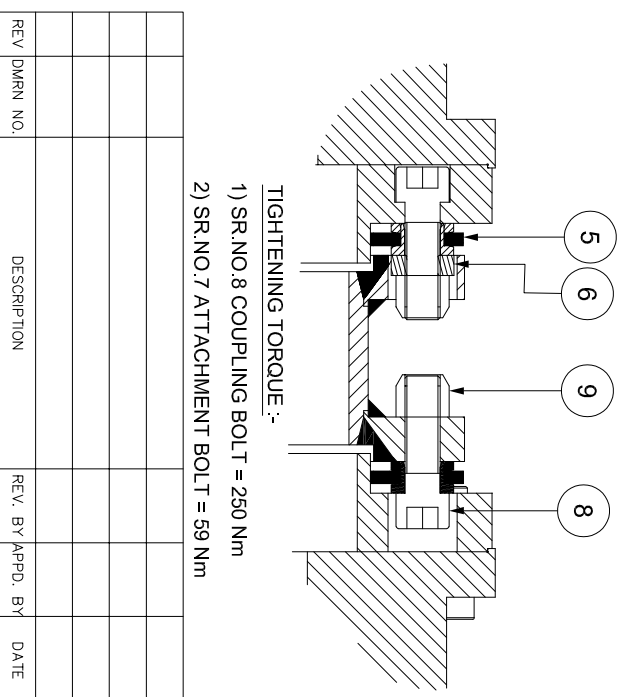
IF IN DOUBT, PLEASE ASK

DO NOT SCALE ALL DIMENSIONS ARE IN mm

J	I	H	G	F	E	D	C	B	A
ERP CODE:									



APPLICATION DETAILS	
APPLICATION	-
RATED POWER	-
RATED SPEED	-
RATED TORQUE	-
A.S.F.	-
COUPLING SPECIFICATIONS	
COUPLING RATING	58.5 KW @ 100 RPM
RATED TORQUE	5586 Nm
MAX. BORE	127 mm
WEIGHT (Approx.)	62.212 kg
INERTIA (WK <sup>2</sup> )	0.353 kg.M <sup>2</sup>
TORSIONAL STIFFNESS	1.239 MNm/rad
CPLG DYNAMIC BALANCED TO GR 6.3 AS PER ISO 21940-11	
MAX. MISALIGNMENT	
AXIAL DEFLECTION	± 2 mm
ANGULAR DEFLECTION	0.75°
RADIAL MISALIGNMENT	0.013 mm



TIGHTENING TORQUE :-  
 1) SR.NO.8 COUPLING BOLT = 250 Nm  
 2) SR.NO.7 ATTACHMENT BOLT = 59 Nm

SR.NO.	DESCRIPTION	MATERIAL	QTY.
1	DRIVE HUB (III)	ASTM A 1040	1
2	DRIVEN HUB (III)	ASTM A 1040	1
3	ADAPTER III/IV	ASTM A 1040	2
4	SPACER	ASTM A36 ASTM A106B   ASTM A1040	1
5	ELEMENT BLADE ASSEMBLY	AISI SS 301	2
6	SLEEVE	ASTM A 1040	6
7	ATTACHMENT BOLT (III)	AH BOLT GR. 12.9	12
8	COUPLING BOLT	AH BOLT GR. 12.9	10
9	CLEVELOCK NUT	GR.10	10

TITLE:	REM -390(175) III/III
CUSTOMER NAME:	RATHI TRANSPOWER PVT LTD
SCALE:	1:10
AUTHORITY:	INITIALS
DRAWN:	-
CHECKED:	-
APPROVED:	-
REF. NO.:	XXXX