

IF IN DOUBT, PLEASE ASK

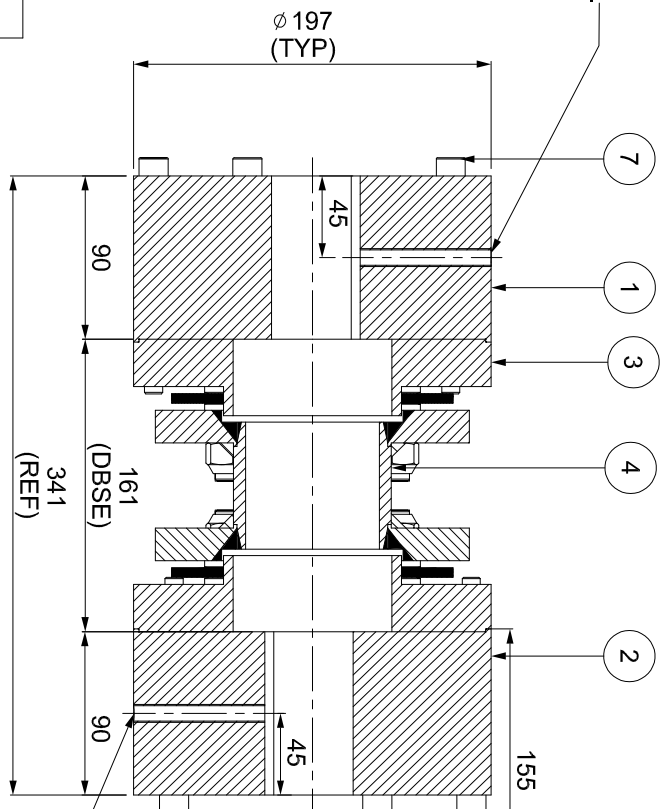
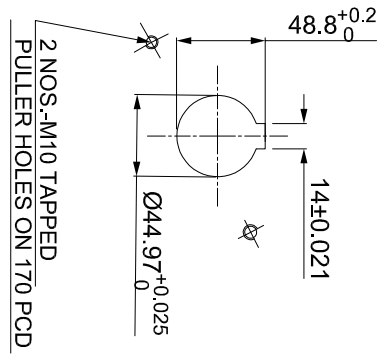
DO NOT SCALE ALL DIMENSIONS ARE IN mm

J I H G F E D C B A

ERP CODE: _____

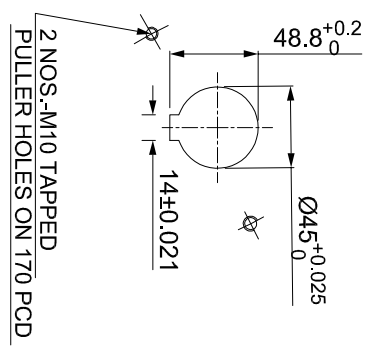
M10 SET SCREW ON KEYWAY.

DRIVE SIDE



ALLEN KEY

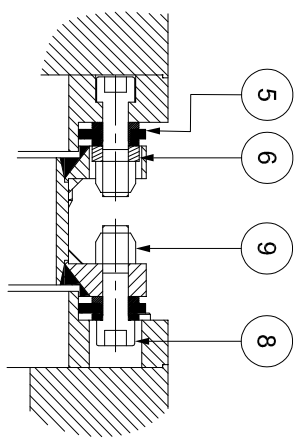
DRIVE SIDE



M10 SET SCREW ON KEYWAY.

APPLICATION DETAILS

1	APPLICATION	-
2	RATED POWER	-
3	RATED SPEED	-
4	RATED TORQUE	-
5	A.S.F.	-
6	COUPLING SPECIFICATIONS	-
7	COUPLING RATING	36.3 KW @ 100 RPM
8	RATED TORQUE	3466 Nm
9	MAX. BORE	140 mm
10	WEIGHT (Approx.)	57.373 kg
11	INERTIA (WK ²)	0.294 kg.M ²
12	TORSIONAL STIFFNESS	0.749 MNm/rad
13	CPLG DYNAMIC BALANCED TO GR 6.3 AS PER ISO 21940-11	
14	MAX. MISALIGNMENT	
15	AXIAL DEFLECTION	± 1 mm
16	ANGULAR DEFLECTION	0.75°
17	RADIAL MISALIGNMENT	0.013mm



NOTE:-

- 1) TIGHTENING TORQUE:-
- 1) SR.NO.8 COUPLING BOLT = 161 Nm
- 2) SR.NO.7 ATTACHMENT BOLT = 59 Nm

REV	DMRN NO	DESCRIPTION	REV. BY	APPD. BY	DATE

SR.NO.	DESCRIPTION	MATERIAL	QTY.
1	DRIVE HUB (IV)	ASTM A 1040	1
2	DRIVEN HUB (IV)	ASTM A 1040	1
3	ADAPTER III/IV	ASTM A 1040	2
4	SPACER	ASTM A106B, ASTM A36 \	1
5	ELEMENT BLADE ASSEMBLY	ANSI SS 301	2
6	SLEEVE	ASTM A 1040	6
7	ATTACHMENT BOLT (IV)	AH BOLT GR. 12.9	12
8	COUPLING BOLT	AH BOLT GR. 12.9	12
9	CLEVELOCK NUT	GR 10	12

TITLE: REM-370(161)(V/IV) /XXXX CPLG

CUSTOMER NAME:

LONGJOY **RATHI TRANSPOWER PVT LTD**
 PUNE-411014
 SCALE: 1:1
 REF. NO. _____
 DATE: 14.01.19

This drawing/information/design is the property of Rathi Transpower Pvt. Ltd. It is confidential & must not be made public or copied without prior written authorization & is subjected to recall at any time. Acceptance of this drawing constitutes full arrangements with these conditions.