

IF IN DOUBT, PLEASE ASK

DO NOT SCALE ALL DIMENSIONS ARE IN mm

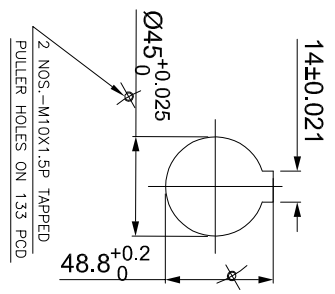
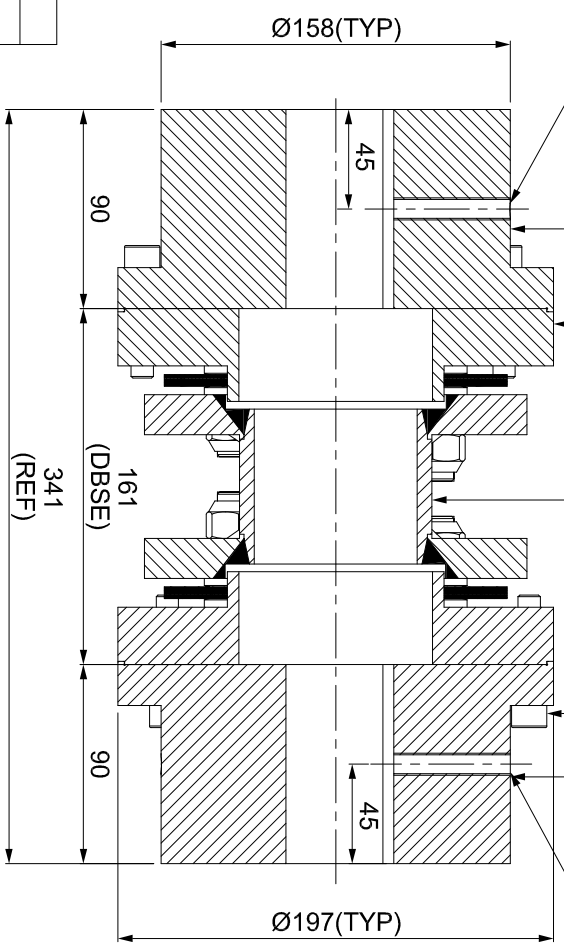
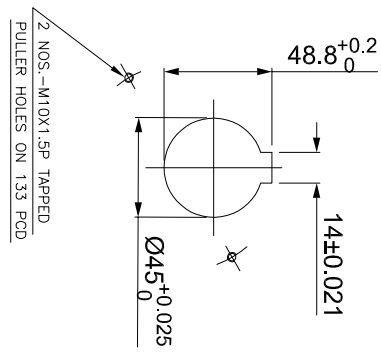
J I H G F E D C B A

ERP CODE: _____

DRIVE SIDE

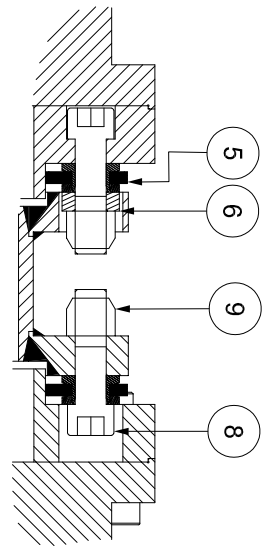
M10 SET SCREW ON KEYWAY.

DRIVEN SIDE



APPLICATION DETAILS

APPLICATION	-
RATED POWER	-
RATED SPEED	-
RATED TORQUE	-
A.S.F.	-
COUPLING SPECIFICATIONS	
COUPLING RATING	36.3 KW @ 100 RPM
RATED TORQUE	3466 Nm
MAX. BORE	108 mm
WEIGHT (Approx.)	45.730 kg
INERTIA (WK ²)	0.199 kg.M ²
TORSIONAL STIFFNESS	0.749 MNm/rad
CPLG DYNAMIC BALANCED TO GR 6.3 AS PER ISO 21940-11	
MAX. MISALIGNMENT	
AXIAL DEFLECTION	± 1 mm
ANGULAR DEFLECTION	0.75°
RADIAL MISALIGNMENT	0.013mm



TIGHTENING TORQUE :-

- 1) SR.NO.8 COUPLING BOLT = 161 Nm
- 2) SR.NO.7 ATTACHMENT BOLT = 59 Nm

SR.NO.	DESCRIPTION	MATERIAL	QTY.
9	CLEVELOCK NUT	GR.10	12
8	COUPLING BOLT	AH BOLT GR. 12.9	12
7	ATTACHMENT BOLT (III)	AH BOLT GR. 12.9	12
6	SLEEVE	ASTM A 1040	6
5	ELEMENT BLADE ASSEMBLY	AISI SS 301	2
4	SPACER	ASTM A106B, ASTM A361 ASTM A1040	1
3	ADAPTER IIIIV	ASTM A 1040	2
2	DRIVEN HUB (III)	ASTM A 1040	1
1	DRIVE HUB (III)	ASTM A 1040	1

TITLE: REM-370(161) III/III
 MATERIAL: REFER TABLE
 CUSTOMER NAME: _____
 SCALE: 1:9
 AUTHORITY: _____
 DRAWN: _____
 CHECKED: _____
 APPROVED: _____
 REF. NO. _____

Lovejoy
RATHI TRANSPOWER PVT LTD
PUNE-411014
 Dwg. NO.: XXXX
 3 EN-F-112-Rev1

This drawing/ information/ design is the property of Rathi Transpower Pvt. Ltd. It is confidential & must not be made public or copied without prior written authorization & is subjected to recall at any time. Acceptance of this drawing constitutes full arrangements with these conditions.