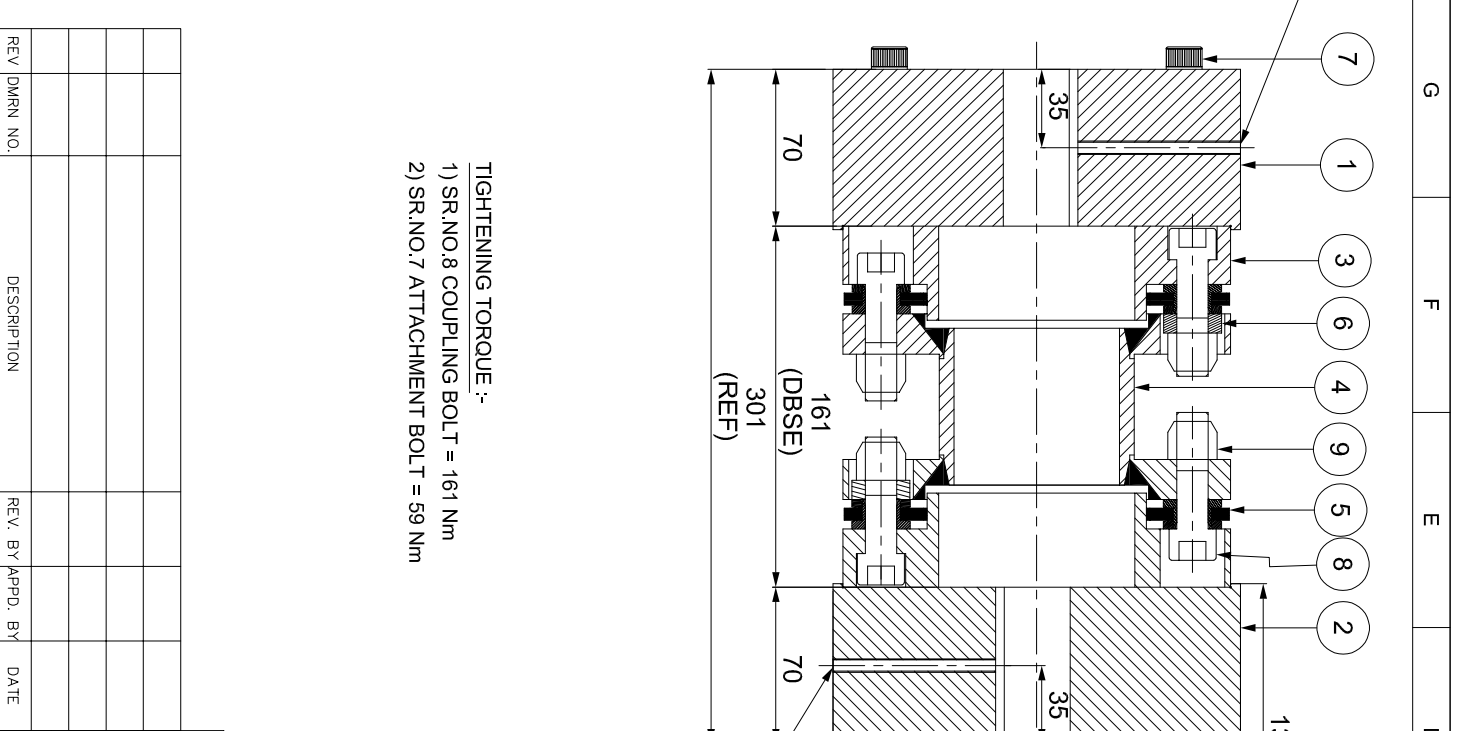


J	I	H	G	F	E	D	C	B	A
ERP CODE:									



7	1	3	6	4	9	5	8	2
---	---	---	---	---	---	---	---	---

9	CLEVELOCK NUT	GR.10	12
8	COUPLING BOLT	AH BOLT GR. 12.9	12
7	ATTACHMENT BOLT (II)	AH BOLT GR. 12.9	12
6	SLEEVE	ASTM A 1040	6
5	ELEMENT BLADE ASSEMBLY	ASIS SS 301	2
4	SPACER	ASTM A106B, ASTM A361 ASTM A1040	1
3	ADAPTER IIII	ASTM A 1040	2
2	DRIVEN HUB (II)	ASTM A 1040	1
1	DRIVE HUB (II)	ASTM A 1040	1

8	APPLICATION DETAILS	
7	APPLICATION	-
6	RATED POWER	-
5	RATED SPEED	-
4	RATED TORQUE	-
3	A.S.F.	-
3	COUPLING SPECIFICATIONS	
3	COUPLING RATING	36.3 KW @ 100 RPM
3	RATED TORQUE	3466 Nm
3	MAX. BORE	120 mm
3	WEIGHT (Approx.)	41.731 kg
3	INERTIA (WK ²)	0.181 kg M ²
3	TORSIONAL STIFFNESS	0.749 MNm/rad
3	CPLG DYNAMIC BALANCED TO GR 6.3 AS PER ISO 21940-11	
3	MAX. MISALIGNMENT	
1	AXIAL DEFLECTION	± 1 mm
1	ANGULAR DEFLECTION	0.75°
1	RADIAL MISALIGNMENT	0.013mm

TIGHTENING TORQUE :-	
1) SR.NO.8 COUPLING BOLT = 161 Nm	
2) SR.NO.7 ATTACHMENT BOLT = 59 Nm	

TITLE:	REM-370(161) IIII / CPLG.
CUSTOMER NAME:	

REV	DMRN NO.	DESCRIPTION	REV. BY	APPD. BY	DATE

RATHI TRANSPower PVT LTD
 PUNE-411014

MATERIAL:	REFER TABLE	AUTHORITY	INITIALS	SIGN	DATE
DRAWN	-	-	-	-	-
CHECKED	-	-	-	-	-
APPROVED	-	-	-	-	-

SCALE:	1:1
REF. NO.	
DRG. NO.:	XXXX